

Centrobin Polyclonal Antibody

Catalog No :	YT0855
Reactivity :	Human;Mouse
Applications :	WB;IHC;IF;ELISA
Target :	Centrobin
Gene Name :	CNTROB
Protein Name :	Centrobin
Human Gene Id :	116840
Human Swiss Prot No :	Q8N137
Mouse Swiss Prot No :	Q8CB62
Immunogen :	The antiserum was produced against synthesized peptide derived from human CNTROB. AA range:591-640
Specificity :	Centrobin Polyclonal Antibody detects endogenous levels of Centrobin protein.
Formulation :	Liquid in PBS containing 50% glycerol, 0.5% BSA and 0.02% sodium azide.
Source :	Polyclonal, Rabbit,IgG
Dilution :	WB 1:500 - 1:2000. IHC 1:100 - 1:300. ELISA: 1:5000.. IF 1:50-200
Purification :	The antibody was affinity-purified from rabbit antiserum by affinity-chromatography using epitope-specific immunogen.
Concentration :	1 mg/ml
Storage Stability :	-15°C to -25°C/1 year(Do not lower than -25°C)
Observed Band :	100kD

Background : This gene encodes a centrosomal protein that interacts with BRCA2, and is required for centriole duplication and cytokinesis. Alternatively spliced transcript variants encoding different isoforms have been described for this gene. [provided by RefSeq, Aug 2011],

Function : developmental stage:Preferentially incorporated into the newly assembled daughter centriole during centriole assembly at the late G1 or early S phase. Remains in the daughter centrioles throughout the cell cycle. At the next cycle of centriole duplication, its amount on the original daughter centriole eventually decreases.,function:Required for centriole duplication. Inhibition of centriole duplication leading to defects in cytokinesis.,PTM:Phosphorylated upon DNA damage, probably by ATM or ATR.,sequence caution:Wrong choice of frame.,subcellular location:Centriole-associated, asymmetrically localizes to the daughter centriole.,subunit:Interacts with LYST.,tissue specificity:Widely expressed (at protein level). Highly expressed in testis. Also expressed in spleen, thymus, prostate, small intestine, colon and peripheral blood leukocytes.,

Subcellular Location : Cytoplasm, cytoskeleton, microtubule organizing center, centrosome, centriole . Centriole-associated, asymmetrically localizes to the daughter centriole.

Expression : Widely expressed (at protein level). Highly expressed in testis. Also expressed in spleen, thymus, prostate, small intestine, colon and peripheral blood leukocytes.

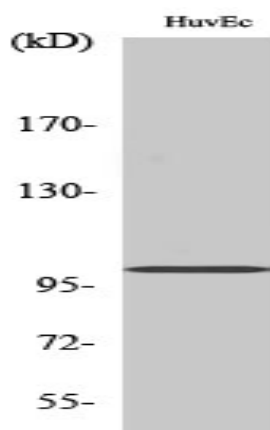
Sort : 3846

No4 : 1

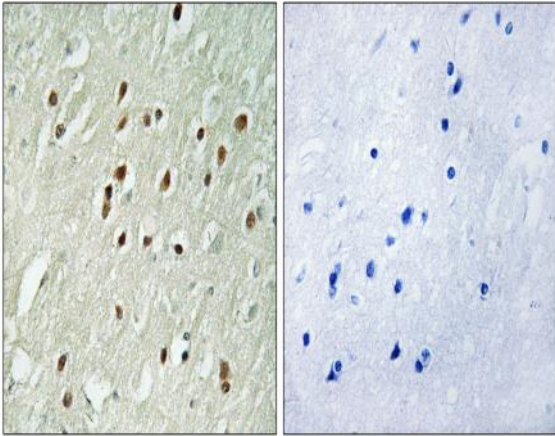
Host : Rabbit

Modifications : Unmodified

Products Images



Western Blot analysis of various cells using Centrobins Polyclonal Antibody



Immunohistochemistry analysis of paraffin-embedded human brain, using CNTROB Antibody. The picture on the right is blocked with the synthesized peptide.