

CSRNP3 Polyclonal Antibody

Catalog No :	YT1142
Reactivity :	Human;Mouse;Monkey
Applications :	WB;ELISA
Target :	CSRNP3
Gene Name :	CSRNP3
Protein Name :	Cysteine/serine-rich nuclear protein 3
Human Gene Id :	80034
Human Swiss Prot No :	Q8WYN3
Mouse Gene Id :	77771
Mouse Swiss Prot No :	P59055
Immunogen :	The antiserum was produced against synthesized peptide derived from human TAIP-2. AA range:171-220
Specificity :	CSRNP3 Polyclonal Antibody detects endogenous levels of CSRNP3 protein.
Formulation :	Liquid in PBS containing 50% glycerol, 0.5% BSA and 0.02% sodium azide.
Source :	Polyclonal, Rabbit,IgG
Dilution :	WB 1:500 - 1:2000. ELISA: 1:20000. Not yet tested in other applications.
Purification :	The antibody was affinity-purified from rabbit antiserum by affinity-chromatography using epitope-specific immunogen.
Concentration :	1 mg/ml
Storage Stability :	-15°C to -25°C/1 year(Do not lower than -25°C)

Observed Band : 64kD

Background : function: Binds to the consensus sequence 5'-AGAGTG-3' and has transcriptional activator activity. Plays a role in apoptosis., sequence caution: Unusual initiator. The initiator methionine is coded by a non-canonical CTG leucine codon., similarity: Belongs to the AXUD1 family.,

Function : function: Binds to the consensus sequence 5'-AGAGTG-3' and has transcriptional activator activity. Plays a role in apoptosis., sequence caution: Unusual initiator. The initiator methionine is coded by a non-canonical CTG leucine codon., similarity: Belongs to the AXUD1 family.,

Subcellular Location : Nucleus .

Expression : Embryo, Thymus,

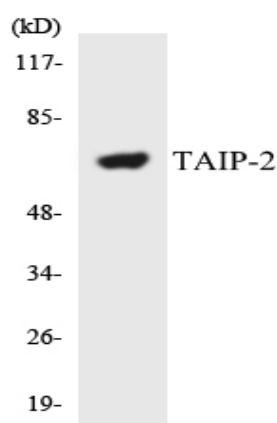
Sort : 4633

No4 : 1

Host : Rabbit

Modifications : Unmodified

Products Images



Western blot analysis of the lysates from HepG2 cells using TAIP-2 antibody.