

CSRNP2 Polyclonal Antibody

Catalog No :	YT1141
Reactivity :	Human;Mouse;Rat
Applications :	WB;IHC;IF;ELISA
Target :	CSRNP2
Gene Name :	CSRNP2
Protein Name :	Cysteine/serine-rich nuclear protein 2
Human Gene Id :	81566
Human Swiss Prot No :	Q9H175
Mouse Gene Id :	207785
Mouse Swiss Prot No :	Q8BGQ2
Immunogen :	The antiserum was produced against synthesized peptide derived from human TAIP-12. AA range:91-140
Specificity :	CSRNP2 Polyclonal Antibody detects endogenous levels of CSRNP2 protein.
Formulation :	Liquid in PBS containing 50% glycerol, 0.5% BSA and 0.02% sodium azide.
Source :	Polyclonal, Rabbit,IgG
Dilution :	WB 1:500 - 1:2000. IHC 1:100 - 1:300. ELISA: 1:20000.. IF 1:50-200
Purification :	The antibody was affinity-purified from rabbit antiserum by affinity-chromatography using epitope-specific immunogen.
Concentration :	1 mg/ml
Storage Stability :	-15°C to -25°C/1 year(Do not lower than -25°C)

Observed Band : 60kD

Background : The protein encoded by this gene belongs to the CSRNP family of nuclear proteins that share conserved regions, including cysteine- and serine- rich regions, a basic domain, a transcriptional activation domain, and bind the sequence 'AGAGTG';, thus have the hallmark of transcription factors. Studies in mice suggest that these genes may have redundant functions. Alternatively spliced transcript variants have been found for this gene. [provided by RefSeq, Aug 2011],

Function : function: Binds to the consensus sequence 5'-AGAGTG-3' and has transcriptional activator activity (By similarity). May play a role in apoptosis., similarity: Belongs to the AXUD1 family.,

Subcellular Location : Nucleus .

Expression : Brain, Heart,

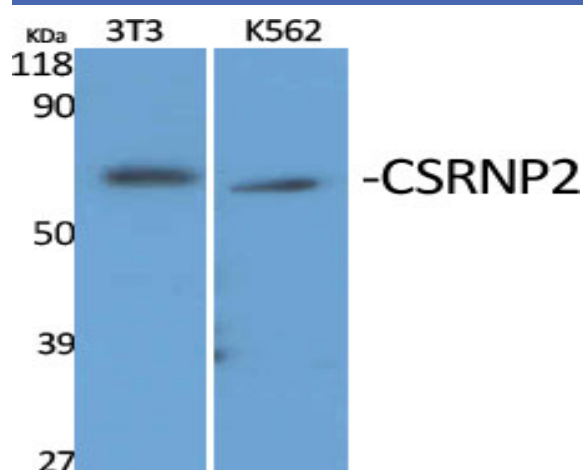
Sort : 4632

No4 : 1

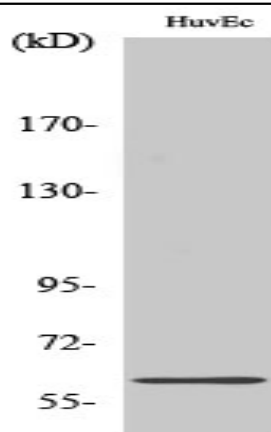
Host : Rabbit

Modifications : Unmodified

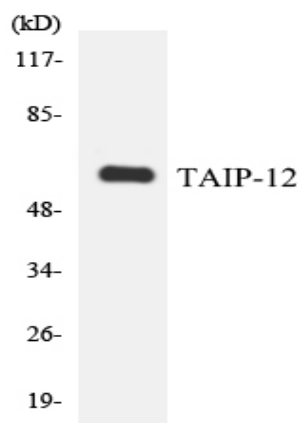
Products Images



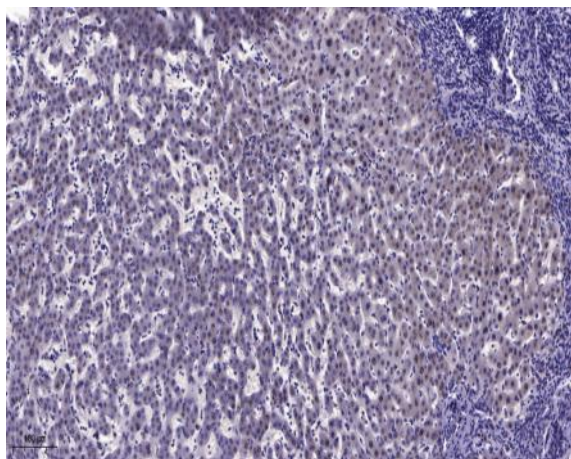
Western Blot analysis of various cells using CSRNP2 Polyclonal Antibody cells nucleus extracted by Minute TM Cytoplasmic and Nuclear Fractionation kit (SC-003, Inventbiotech, MN, USA).



Western Blot analysis of A549 cells using CSRNP2 Polyclonal Antibody cells nucleus extracted by Minute TM Cytoplasmic and Nuclear Fractionation kit (SC-003, Inventbiotech, MN, USA).



Western blot analysis of the lysates from 293 cells using TAIP-12 antibody.



Immunohistochemical analysis of paraffin-embedded human liver cancer. 1, Antibody was diluted at 1:200(4° overnight). 2, Tris-EDTA, pH9.0 was used for antigen retrieval. 3, Secondary antibody was diluted at 1:200(room temperature, 45min).