

**CELSR3 Polyclonal Antibody**

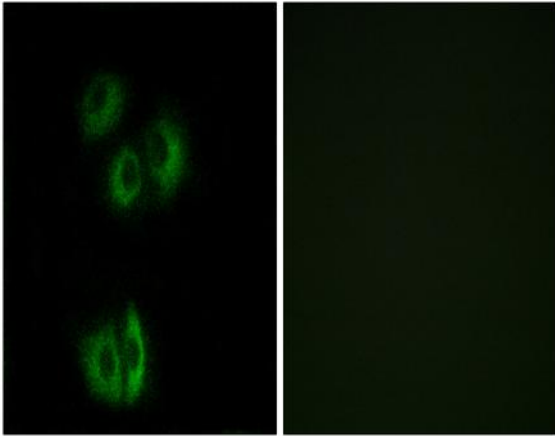
<b>Catalog No :</b>	YT0851
<b>Reactivity :</b>	Human;Mouse;Rat
<b>Applications :</b>	IF;ELISA
<b>Target :</b>	CELSR3
<b>Gene Name :</b>	CELSR3
<b>Protein Name :</b>	Cadherin EGF LAG seven-pass G-type receptor 3
<b>Human Gene Id :</b>	1951
<b>Human Swiss Prot No :</b>	Q9NYQ7
<b>Mouse Gene Id :</b>	107934
<b>Mouse Swiss Prot No :</b>	Q91ZI0
<b>Rat Gene Id :</b>	83466
<b>Rat Swiss Prot No :</b>	O88278
<b>Immunogen :</b>	The antiserum was produced against synthesized peptide derived from human CELSR3. AA range:3195-3244
<b>Specificity :</b>	CELSR3 Polyclonal Antibody detects endogenous levels of CELSR3 protein.
<b>Formulation :</b>	Liquid in PBS containing 50% glycerol, 0.5% BSA and 0.02% sodium azide.
<b>Source :</b>	Polyclonal, Rabbit,IgG
<b>Dilution :</b>	IF 1:200 - 1:1000. ELISA: 1:40000. Not yet tested in other applications.
<b>Purification :</b>	The antibody was affinity-purified from rabbit antiserum by affinity-chromatography using epitope-specific immunogen.

---

<b>Concentration :</b>	1 mg/ml
<b>Storage Stability :</b>	-15°C to -25°C/1 year(Do not lower than -25°C)
<b>Molecularweight :</b>	358kD
<b>Background :</b>	<p>This gene belongs to the flamingo subfamily, which is included in the cadherin superfamily. The flamingo cadherins consist of nonclassic-type cadherins that do not interact with catenins. They are plasma membrane proteins containing seven epidermal growth factor-like repeats, nine cadherin domains and two laminin A G-type repeats in their ectodomain. They also have seven transmembrane domains, a characteristic feature of their subfamily. The encoded protein may be involved in the regulation of contact-dependent neurite growth and may play a role in tumor formation. [provided by RefSeq, Jun 2013],</p>
<b>Function :</b>	<p>function:Does not seem to be involved in anion transport.,function:Receptor that may have an important role in cell/cell signaling during nervous system formation.,similarity:Belongs to the G-protein coupled receptor 2 family. LN-TM7 subfamily.,similarity:Belongs to the SLC26A/SulP transporter (TC 2.A.53) family.,similarity:Contains 1 GPS domain.,similarity:Contains 1 laminin EGF-like domain.,similarity:Contains 1 STAS domain.,similarity:Contains 2 laminin G-like domains.,similarity:Contains 8 EGF-like domains.,similarity:Contains 9 cadherin domains.,tissue specificity:Ubiquitous. Highest levels in kidney and pancreas. Lower expression in heart, skeletal muscle, liver and placenta. Also found in lung and brain.,</p>
<b>Subcellular Location :</b>	Cell membrane; Multi-pass membrane protein.
<b>Expression :</b>	Brain,Cord blood,Duodenum,Epithelium,Kidney,Uterus,
<b>Sort :</b>	3838
<b>No4 :</b>	1
<b>Host :</b>	Rabbit
<b>Modifications :</b>	Unmodified

---

## Products Images



Immunofluorescence analysis of A549 cells, using CELSR3 Antibody. The picture on the right is blocked with the synthesized peptide.