

CEACAM21 Polyclonal Antibody

| | |
|------------------------------|---|
| Catalog No : | YT0849 |
| Reactivity : | Human |
| Applications : | WB;ELISA |
| Target : | CEACAM21 |
| Gene Name : | CEACAM21 |
| Protein Name : | Carcinoembryonic antigen-related cell adhesion molecule 21 |
| Human Gene Id : | 90273 |
| Human Swiss Prot No : | Q3KPI0 |
| Immunogen : | The antiserum was produced against synthesized peptide derived from human CEACAM21. AA range:171-220 |
| Specificity : | CEACAM21 Polyclonal Antibody detects endogenous levels of CEACAM21 protein. |
| Formulation : | Liquid in PBS containing 50% glycerol, 0.5% BSA and 0.02% sodium azide. |
| Source : | Polyclonal, Rabbit,IgG |
| Dilution : | WB 1:500 - 1:2000. ELISA: 1:10000. Not yet tested in other applications. |
| Purification : | The antibody was affinity-purified from rabbit antiserum by affinity-chromatography using epitope-specific immunogen. |
| Concentration : | 1 mg/ml |
| Storage Stability : | -15°C to -25°C/1 year(Do not lower than -25°C) |
| Observed Band : | 32kD |
| Background : | similarity:Belongs to the immunoglobulin superfamily. CEA |

family.,similarity:Contains 1 Ig-like C2-type (immunoglobulin-like) domain.,

Function :

similarity:Belongs to the immunoglobulin superfamily. CEA
family.,similarity:Contains 1 Ig-like C2-type (immunoglobulin-like) domain.,

Subcellular Location :

Membrane ; Single-pass type I membrane protein .

Expression :

Testis,

Sort :

3831

No4 :

1

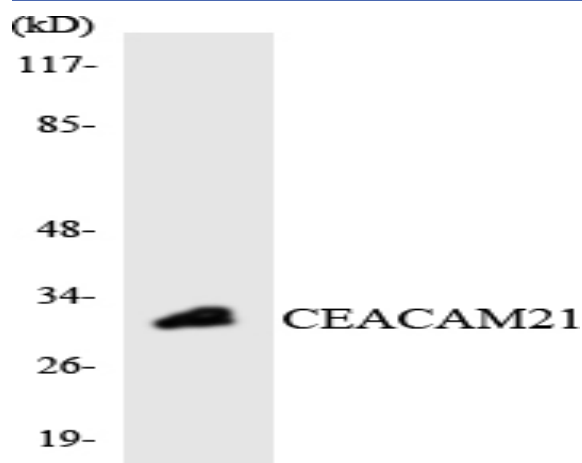
Host :

Rabbit

Modifications :

Unmodified

Products Images



Western blot analysis of the lysates from HT-29 cells using CEACAM21 antibody.