

## CSGlcA-T Polyclonal Antibody

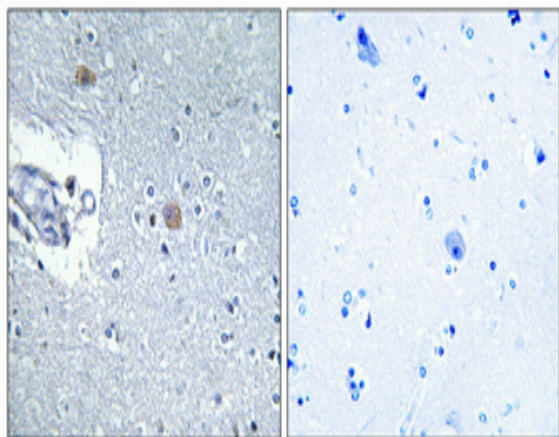
<b>Catalog No :</b>	YT1130
<b>Reactivity :</b>	Human;Rat;Mouse;
<b>Applications :</b>	WB;IHC;IF;ELISA
<b>Target :</b>	CSGlcA-T
<b>Fields :</b>	>>Glycosaminoglycan biosynthesis - chondroitin sulfate / dermatan sulfate;>>Metabolic pathways
<b>Gene Name :</b>	CHPF2
<b>Protein Name :</b>	Chondroitin sulfate glucuronyltransferase
<b>Human Gene Id :</b>	54480
<b>Human Swiss Prot No :</b>	Q9P2E5
<b>Immunogen :</b>	The antiserum was produced against synthesized peptide derived from human CSGLCAT. AA range:31-80
<b>Specificity :</b>	CSGlcA-T Polyclonal Antibody detects endogenous levels of CSGlcA-T protein.
<b>Formulation :</b>	Liquid in PBS containing 50% glycerol, 0.5% BSA and 0.02% sodium azide.
<b>Source :</b>	Polyclonal, Rabbit,IgG
<b>Dilution :</b>	WB 1:500 - 1:2000. IHC 1:100 - 1:300. ELISA: 1:40000.. IF 1:50-200
<b>Purification :</b>	The antibody was affinity-purified from rabbit antiserum by affinity-chromatography using epitope-specific immunogen.
<b>Concentration :</b>	1 mg/ml
<b>Storage Stability :</b>	-15°C to -25°C/1 year(Do not lower than -25°C)
<b>Observed Band :</b>	86kD

---

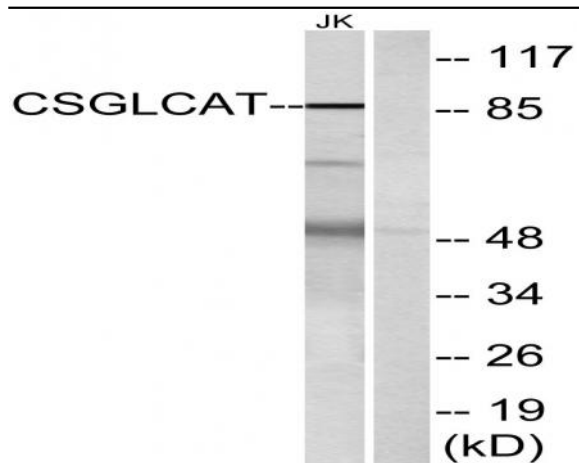
<b>Cell Pathway :</b>	<u>Chondroitin sulfate biosynthesis;</u>
<b>Background :</b>	<u>CHPF2 (Chondroitin Polymerizing Factor 2) is a Protein Coding gene. Among its related pathways are Defective B3GAT3 causes JDSSDHD and Metabolism. GO annotations related to this gene include transferase activity, transferring glycosyl groups and N-acetylgalactosaminyl-proteoglycan 3-beta-glucuronosyltransferase activity. An important paralog of this gene is B4GALNT4.</u>
<b>Subcellular Location :</b>	<u>Golgi apparatus, Golgi stack membrane ; Single-pass type II membrane protein .</u>
<b>Expression :</b>	<u>Ubiquitous. Highly expressed in placenta, small intestine and pancreas.</u>
<b>Sort :</b>	<u>4612</u>
<b>No4 :</b>	<u>1</u>
<b>Host :</b>	<u>Rabbit</u>
<b>Modifications :</b>	<u>Unmodified</u>

---

## Products Images



Immunohistochemical analysis of paraffin-embedded Human brain. Antibody was diluted at 1:100(4° overnight). High-pressure and temperature Tris-EDTA,pH8.0 was used for antigen retrieval. Negative contrl (right) obtained from antibody was pre-absorbed by immunogen peptide.



Western blot analysis of lysates from Jurkat cells, using CSGLCAT Antibody. The lane on the right is blocked with the synthesized peptide.