

CDO Polyclonal Antibody

Catalog No :	YT0844
Reactivity :	Human;Rat;Mouse;
Applications :	IF;ELISA
Target :	CDO
Fields :	>>Hedgehog signaling pathway
Gene Name :	CDON
Protein Name :	Cell adhesion molecule-related/down-regulated by oncogenes
Human Gene Id :	50937
Human Swiss Prot No :	Q4KMG0
Mouse Swiss Prot No :	Q32MD9
Immunogen :	The antiserum was produced against synthesized peptide derived from human CDON. AA range:511-560
Specificity :	CDO Polyclonal Antibody detects endogenous levels of CDO protein.
Formulation :	Liquid in PBS containing 50% glycerol, 0.5% BSA and 0.02% sodium azide.
Source :	Polyclonal, Rabbit,IgG
Dilution :	IF 1:200 - 1:1000. ELISA: 1:10000. Not yet tested in other applications.
Purification :	The antibody was affinity-purified from rabbit antiserum by affinity-chromatography using epitope-specific immunogen.
Concentration :	1 mg/ml
Storage Stability :	-15°C to -25°C/1 year(Do not lower than -25°C)

Molecularweight : 139kD

Background : This gene encodes a cell surface receptor that is a member of the immunoglobulin superfamily. The encoded protein contains three fibronectin type III domains and five immunoglobulin-like C2-type domains. This protein is a member of a cell-surface receptor complex that mediates cell-cell interactions between muscle precursor cells and positively regulates myogenesis. [provided by RefSeq, Aug 2011],

Function : function:Component of a cell-surface receptor complex that mediates cell-cell interactions between muscle precursor cells. Promotes differentiation of myogenic cells.,PTM:N-glycosylated.,similarity:Contains 3 fibronectin type-III domains.,similarity:Contains 5 Ig-like C2-type (immunoglobulin-like) domains.,subunit:Part of a complex that contains BOC, CDON, NEO1, cadherins and CTNNB1. Interacts with NTN3.,

Subcellular Location : Cell membrane ; Single-pass membrane protein .

Expression : Fetal brain,Fetal lung,Placenta,

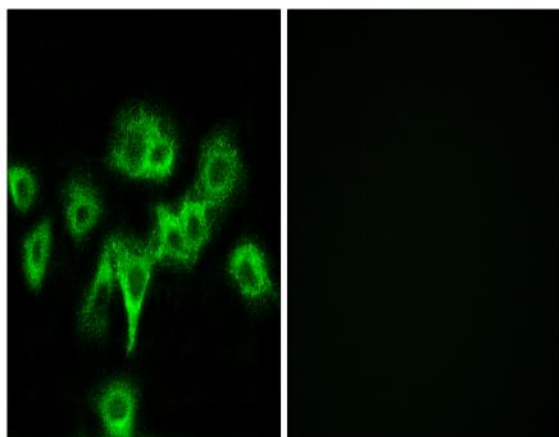
Sort : 3814

No4 : 1

Host : Rabbit

Modifications : Unmodified

Products Images



Immunofluorescence analysis of HeLa cells, using CDON Antibody. The picture on the right is blocked with the synthesized peptide.