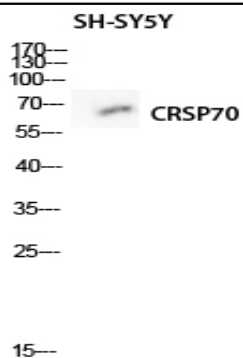


CRSP70 Polyclonal Antibody

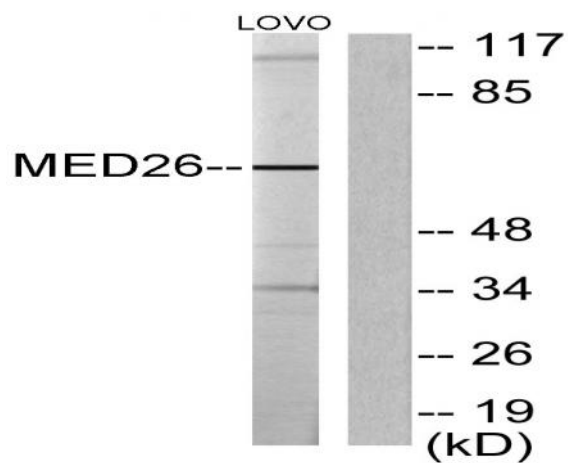
Catalog No :	YT1123
Reactivity :	Human;Mouse
Applications :	WB;ELISA
Target :	CRSP70
Gene Name :	MED26
Protein Name :	Mediator of RNA polymerase II transcription subunit 26
Human Gene Id :	9441
Human Swiss Prot No :	O95402
Mouse Gene Id :	70625
Mouse Swiss Prot No :	Q7TN02
Immunogen :	The antiserum was produced against synthesized peptide derived from human MED26. AA range:1-50
Specificity :	CRSP70 Polyclonal Antibody detects endogenous levels of CRSP70 protein.
Formulation :	Liquid in PBS containing 50% glycerol, 0.5% BSA and 0.02% sodium azide.
Source :	Polyclonal, Rabbit,IgG
Dilution :	WB 1:500 - 1:2000. ELISA: 1:20000. Not yet tested in other applications.
Purification :	The antibody was affinity-purified from rabbit antiserum by affinity-chromatography using epitope-specific immunogen.
Concentration :	1 mg/ml
Storage Stability :	-15°C to -25°C/1 year(Do not lower than -25°C)

Observed Band :	65kD
Background :	<p>The activation of gene transcription is a multistep process that is triggered by factors that recognize transcriptional enhancer sites in DNA. These factors work with co-activators to direct transcriptional initiation by the RNA polymerase II apparatus. The protein encoded by this gene is a subunit of the CRSP (cofactor required for SP1 activation) complex, which, along with TFIID, is required for efficient activation by SP1. This protein is also a component of other multisubunit complexes e.g. thyroid hormone receptor-(TR-) associated proteins which interact with TR and facilitate TR function on DNA templates in conjunction with initiation factors and cofactors. [provided by RefSeq, Jul 2008],</p>
Function :	<p>function:Component of the Mediator complex, a coactivator involved in the regulated transcription of nearly all RNA polymerase II-dependent genes. Mediator functions as a bridge to convey information from gene-specific regulatory proteins to the basal RNA polymerase II transcription machinery. Mediator is recruited to promoters by direct interactions with regulatory proteins and serves as a scaffold for the assembly of a functional preinitiation complex with RNA polymerase II and the general transcription factors.,similarity:Belongs to the Mediator complex subunit 26 family.,similarity:Contains 1 TFIIS N-terminal domain.,subunit:Component of the Mediator complex, which is composed of MED1, MED4, MED6, MED7, MED8, MED9, MED10, MED11, MED12, MED13, MED13L, MED14, MED15, MED16, MED17, MED18, MED19, MED20, MED21, MED22, MED23, MED24, MED25, MED26, MED27, MED29, MED30, MED31, CCNC, CDK8 and C</p>
Subcellular Location :	Nucleus .
Expression :	Epithelium,Uterus,
Sort :	4595
No4 :	1
Host :	Rabbit
Modifications :	Unmodified

Products Images



Western blot analysis of SH-SY5Y lysis using CRSP70 antibody. Antibody was diluted at 1:500 cells nucleus extracted by Minute TM Cytoplasmic and Nuclear Fractionation kit (SC-003, Inventbiotech, MN, USA).



Western blot analysis of lysates from LOVO cells, using MED26 Antibody. The lane on the right is blocked with the synthesized peptide.