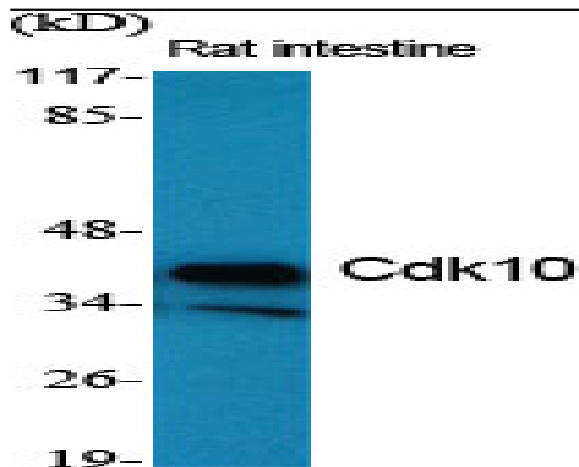


Cdk10 Polyclonal Antibody

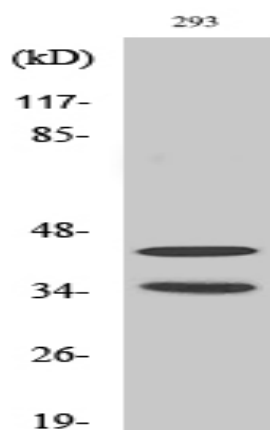
Catalog No :	YT0830
Reactivity :	Human;Mouse;Rat
Applications :	WB;IHC;IF;ELISA
Target :	Cdk10
Gene Name :	CDK10
Protein Name :	Cyclin-dependent kinase 10
Human Gene Id :	8558
Human Swiss Prot No :	Q15131
Mouse Gene Id :	234854
Mouse Swiss Prot No :	Q3UMM4
Rat Gene Id :	361434
Rat Swiss Prot No :	Q4KM47
Immunogen :	The antiserum was produced against synthesized peptide derived from human CDK10. AA range:51-100
Specificity :	Cdk10 Polyclonal Antibody detects endogenous levels of Cdk10 protein.
Formulation :	Liquid in PBS containing 50% glycerol, 0.5% BSA and 0.02% sodium azide.
Source :	Polyclonal, Rabbit,IgG
Dilution :	WB 1:500 - 1:2000. IHC 1:100 - 1:300. ELISA: 1:10000.. IF 1:50-200
Purification :	The antibody was affinity-purified from rabbit antiserum by affinity-chromatography using epitope-specific immunogen.

Concentration :	1 mg/ml
Storage Stability :	-15°C to -25°C/1 year(Do not lower than -25°C)
Observed Band :	43kD
Background :	<p>The protein encoded by this gene belongs to the CDK subfamily of the Ser/Thr protein kinase family. The CDK subfamily members are highly similar to the gene products of <i>S. cerevisiae</i> cdc28, and <i>S. pombe</i> cdc2, and are known to be essential for cell cycle progression. This kinase has been shown to play a role in cellular proliferation and its function is limited to cell cycle G2-M phase. Multiple transcript variants encoding different isoforms have been found for this gene. [provided by RefSeq, May 2009],</p>
Function :	<p>catalytic activity:ATP + a protein = ADP + a phosphoprotein.,similarity:Belongs to the protein kinase superfamily.,similarity:Belongs to the protein kinase superfamily. CMGC Ser/Thr protein kinase family. CDC2/CDKX subfamily.,similarity:Contains 1 protein kinase domain.,</p>
Subcellular Location :	Cytoplasm, cytoskeleton, cilium basal body .
Expression :	Brain,Colon,Kidney,Lung,
Sort :	3783
No4 :	1
Host :	Rabbit
Modifications :	Unmodified

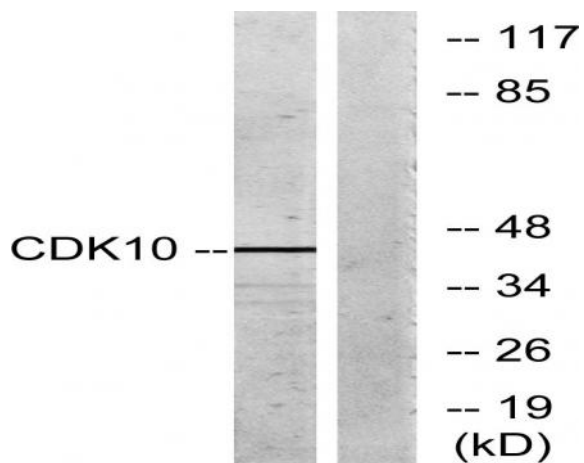
Products Images



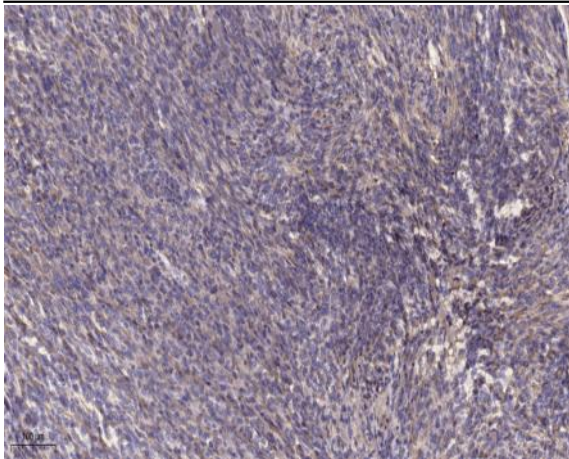
Western Blot analysis of various cells using Cdk10 Polyclonal Antibody diluted at 1:500



Western Blot analysis of 293 cells using Cdk10 Polyclonal Antibody diluted at 1:500



Western blot analysis of lysates from 293 cells, using CDK10 Antibody. The lane on the right is blocked with the synthesized peptide.



Immunohistochemical analysis of paraffin-embedded human Colon cancer. 1, Antibody was diluted at 1:200(4° overnight). 2, Tris-EDTA,pH9.0 was used for antigen retrieval. 3,Secondary antibody was diluted at 1:200(room temperature, 45min).