

Cdc50C Polyclonal Antibody

Catalog No :	YT0814
Reactivity :	Human
Applications :	IF;ELISA
Target :	Cdc50C
Gene Name :	TMEM30C
Protein Name :	Cell cycle control protein 50C
Human Gene Id :	288175
Human Swiss Prot No :	A0ZSE6
Mouse Swiss Prot No :	Q9D4D7
Immunogen :	The antiserum was produced against synthesized peptide derived from human TMEM30C. AA range:51-100
Specificity :	Cdc50C Polyclonal Antibody detects endogenous levels of Cdc50C protein.
Formulation :	Liquid in PBS containing 50% glycerol, 0.5% BSA and 0.02% sodium azide.
Source :	Polyclonal, Rabbit,IgG
Dilution :	IF 1:200 - 1:1000. ELISA: 1:20000. Not yet tested in other applications.
Purification :	The antibody was affinity-purified from rabbit antiserum by affinity-chromatography using epitope-specific immunogen.
Concentration :	1 mg/ml
Storage Stability :	-15°C to -25°C/1 year(Do not lower than -25°C)
Molecularweight :	13kD

Background : TMEM30C, also named as CDC50C, belongs to the CDC50/LEM3 family. TMEM30C is specifically expressed in testis.

Subcellular Location : Membrane ; Single-pass membrane protein .

Expression : Specifically expressed in testis.

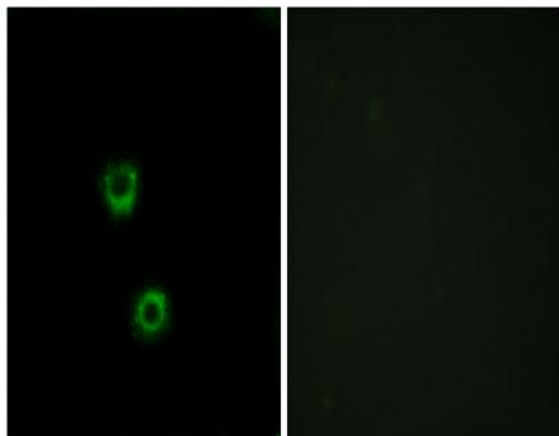
Sort : 3755

No4 : 1

Host : Rabbit

Modifications : Unmodified

Products Images



Immunofluorescence analysis of MCF7 cells, using TMEM30C Antibody. The picture on the right is blocked with the synthesized peptide.