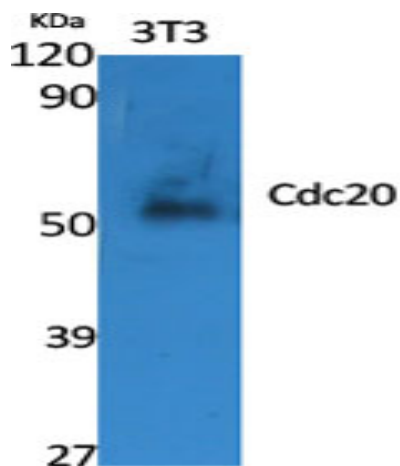


Cdc20 Polyclonal Antibody

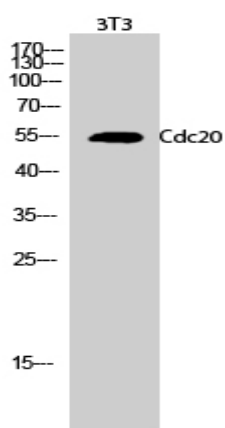
Catalog No :	YT0791
Reactivity :	Human;Mouse;Rat
Applications :	WB;IHC;IF;ELISA
Target :	CDC20
Fields :	>>Cell cycle;>>Oocyte meiosis;>>Ubiquitin mediated proteolysis;>>Human T-cell leukemia virus 1 infection;>>Viral carcinogenesis
Gene Name :	CDC20
Protein Name :	Cell division cycle protein 20 homolog
Human Gene Id :	991
Human Swiss Prot No :	Q12834
Mouse Gene Id :	107995
Mouse Swiss Prot No :	Q9JJ66
Rat Gene Id :	64515
Rat Swiss Prot No :	Q62623
Immunogen :	The antiserum was produced against synthesized peptide derived from human p55CDC. AA range:81-130
Specificity :	Cdc20 Polyclonal Antibody detects endogenous levels of Cdc20 protein.
Formulation :	Liquid in PBS containing 50% glycerol, 0.5% BSA and 0.02% sodium azide.
Source :	Polyclonal, Rabbit,IgG
Dilution :	WB 1:500 - 1:2000. IHC 1:100 - 1:300. ELISA: 1:20000.. IF 1:50-200

Purification :	The antibody was affinity-purified from rabbit antiserum by affinity-chromatography using epitope-specific immunogen.
Concentration :	1 mg/ml
Storage Stability :	-15°C to -25°C/1 year(Do not lower than -25°C)
Observed Band :	50kD
Cell Pathway :	Cell_Cycle_G1S;Cell_Cycle_G2M_DNA;Oocyte meiosis;Ubiquitin mediated proteolysis;
Background :	CDC20 appears to act as a regulatory protein interacting with several other proteins at multiple points in the cell cycle. It is required for two microtubule-dependent processes, nuclear movement prior to anaphase and chromosome separation. [provided by RefSeq, Jul 2008],
Function :	developmental stage:Synthesis is initiated at G1/S, protein level peaks in M phase and protein is abruptly degraded at M/G1 transition.,function:Required for full ubiquitin ligase activity of the anaphase promoting complex/cyclosome (APC/C) and may confer substrate specificity upon the complex. Is regulated by MAD2L1. In metaphase the MAD2L1-CDC20-APC/C ternary complex is inactive and in anaphase the CDC20-APC/C binary complex is active in degrading substrates.,pathway:Protein modification; protein ubiquitination.,PTM:Phosphorylated during mitosis, probably by maturation promoting factor (MPF).,PTM:Ubiquitinated and degraded by the proteasome during spindle assembly checkpoint.,similarity:Belongs to the WD repeat CDC20/Fizzy family.,similarity:Contains 7 WD repeats.,subunit:Found in a complex with CDC20, CDC27, SPATC1 and TUBG1. Interacts with SPATC1 (By similarity). Interacts with MAD2L
Subcellular Location :	Cytoplasm, cytoskeleton, microtubule organizing center, centrosome . Cytoplasm, cytoskeleton, spindle pole .
Expression :	Colon,Colon adenocarcinoma,Liver,Lymph,Muscle,Ovary,Skin,Spleen,Testis,
Tag :	hot
Sort :	3720
No4 :	1
Host :	Rabbit
Modifications :	Unmodified

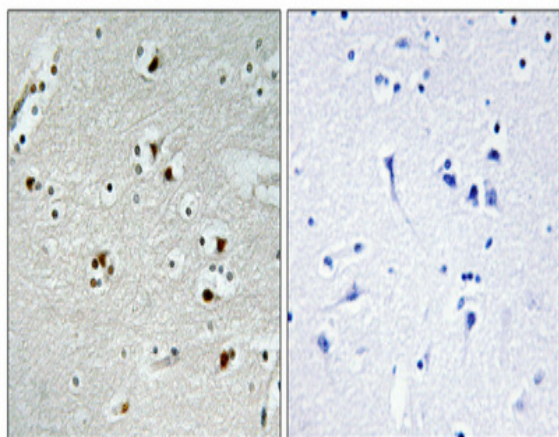
Products Images



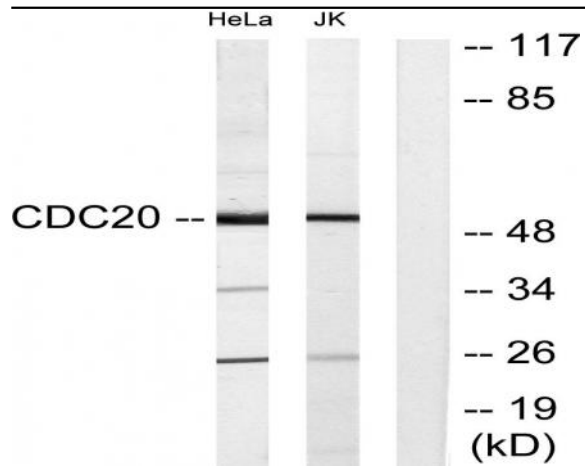
Western Blot analysis of various cells using Cdc20 Polyclonal Antibody diluted at 1:2000



Western Blot analysis of 3T3 cells using Cdc20 Polyclonal Antibody diluted at 1:2000



Immunohistochemical analysis of paraffin-embedded Human brain. Antibody was diluted at 1:100(4° overnight). High-pressure and temperature Tris-EDTA,pH8.0 was used for antigen retrieval. Negative contrl (right) obtained from antibody was pre-absorbed by immunogen peptide.



Western blot analysis of lysates from Jurkat and HeLa cells, using p55CDC Antibody. The lane on the right is blocked with the synthesized peptide.