

## COX19 Polyclonal Antibody

<b>Catalog No :</b>	YT1072
<b>Reactivity :</b>	Human;Mouse
<b>Applications :</b>	IHC;IF;ELISA
<b>Target :</b>	COX19
<b>Fields :</b>	>>Thermogenesis
<b>Gene Name :</b>	COX19
<b>Protein Name :</b>	Cytochrome c oxidase assembly protein COX19
<b>Human Gene Id :</b>	90639
<b>Human Swiss Prot No :</b>	Q49B96
<b>Mouse Gene Id :</b>	68033
<b>Mouse Swiss Prot No :</b>	Q8K0C8
<b>Immunogen :</b>	The antiserum was produced against synthesized peptide derived from human COX19. AA range:10-59
<b>Specificity :</b>	COX19 Polyclonal Antibody detects endogenous levels of COX19 protein.
<b>Formulation :</b>	Liquid in PBS containing 50% glycerol, 0.5% BSA and 0.02% sodium azide.
<b>Source :</b>	Polyclonal, Rabbit,IgG
<b>Dilution :</b>	IHC 1:100 - 1:300. ELISA: 1:20000.. IF 1:50-200
<b>Purification :</b>	The antibody was affinity-purified from rabbit antiserum by affinity-chromatography using epitope-specific immunogen.
<b>Concentration :</b>	1 mg/ml

**Storage Stability :** -15°C to -25°C/1 year(Do not lower than -25°C)

**Molecularweight :** 10kD

**Background :** COX19 encodes a cytochrome c oxidase (COX)-assembly protein. The S. cerevisiae Cox19 protein may play a role in metal transport to the mitochondrial intermembrane space and assembly of complex IV of the mitochondrial respiratory chain (Sacconi et al., 2005 [PubMed 16212937]).[supplied by OMIM, Mar 2008],

**Function :** function:May be required for the assembly of mitochondrial cytochrome c oxidase.,similarity:Belongs to the COX19 family.,similarity:Contains 1 CHCH domain.,tissue specificity:Ubiquitously expressed. Highly expressed in skeletal muscle.,

**Subcellular Location :** Cytoplasm, cytosol . Mitochondrion intermembrane space . Mitochondrion . Partitions between mitochondria and the cytosol in a copper-dependent manner. Enriched in the cytosol when intracellular copper concentrations are elevated. .

**Expression :** Ubiquitously expressed. Highly expressed in skeletal muscle.

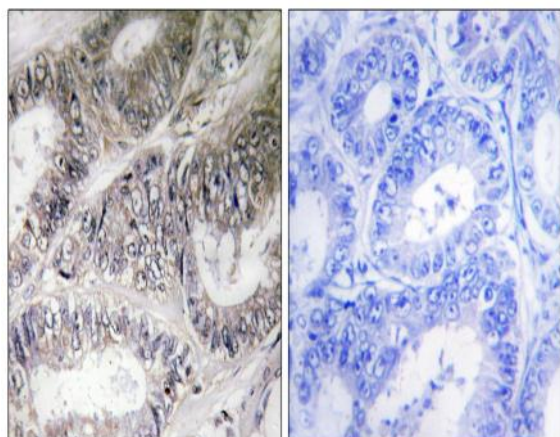
**Sort :** 4473

**No4 :** 1

**Host :** Rabbit

**Modifications :** Unmodified

## Products Images



Immunohistochemistry analysis of paraffin-embedded human colon carcinoma tissue, using COX19 Antibody. The picture on the right is blocked with the synthesized peptide.