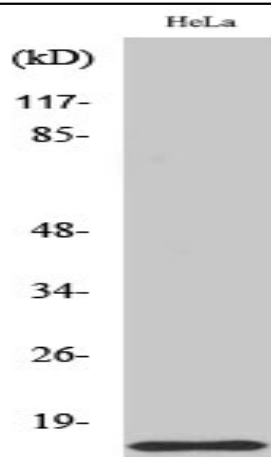


COX17 Polyclonal Antibody

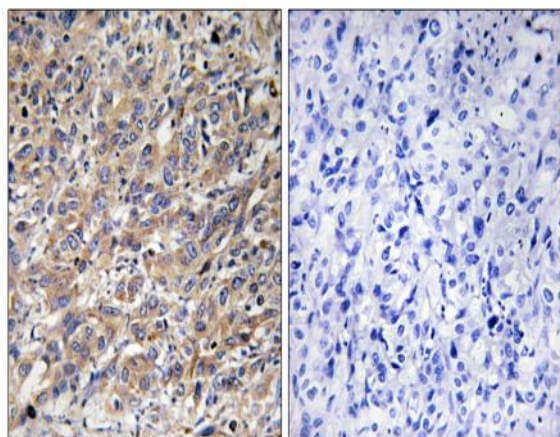
Catalog No :	YT1071
Reactivity :	Human;Mouse;Rat
Applications :	WB;IHC;IF;ELISA
Target :	COX17
Fields :	>>Oxidative phosphorylation;>>Metabolic pathways;>>Thermogenesis
Gene Name :	COX17
Protein Name :	Cytochrome c oxidase copper chaperone
Human Gene Id :	10063
Human Swiss Prot No :	Q14061
Mouse Gene Id :	12856
Mouse Swiss Prot No :	P56394
Immunogen :	The antiserum was produced against synthesized peptide derived from human COX17. AA range:1-50
Specificity :	COX17 Polyclonal Antibody detects endogenous levels of COX17 protein.
Formulation :	Liquid in PBS containing 50% glycerol, 0.5% BSA and 0.02% sodium azide.
Source :	Polyclonal, Rabbit,IgG
Dilution :	WB 1:500 - 1:2000. IHC 1:100 - 1:300. IF 1:200 - 1:1000. ELISA: 1:5000. Not yet tested in other applications.
Purification :	The antibody was affinity-purified from rabbit antiserum by affinity-chromatography using epitope-specific immunogen.
Concentration :	1 mg/ml

Storage Stability :	-15°C to -25°C/1 year(Do not lower than -25°C)
Observed Band :	7kD
Cell Pathway :	Oxidative phosphorylation;
Background :	<p>Cytochrome c oxidase (COX), the terminal component of the mitochondrial respiratory chain, catalyzes the electron transfer from reduced cytochrome c to oxygen. This component is a heteromeric complex consisting of 3 catalytic subunits encoded by mitochondrial genes and multiple structural subunits encoded by nuclear genes. The mitochondrially-encoded subunits function in electron transfer, and the nuclear-encoded subunits may function in the regulation and assembly of the complex. This nuclear gene encodes a protein which is not a structural subunit, but may be involved in the recruitment of copper to mitochondria for incorporation into the COX apoenzyme. This protein shares 92% amino acid sequence identity with mouse and rat Cox17 proteins. This gene is no longer considered to be a candidate gene for COX deficiency. A pseudogene COX17P has been found on chromosome 13. [provi</p>
Function :	<p>function:Copper chaperone for cytochrome c oxidase (COX). Binds two copper ions and deliver them to the Cu(A) site of COX.,similarity:Belongs to the COX17 family.,tissue specificity:Ubiquitous.,</p>
Subcellular Location :	Mitochondrion intermembrane space . Cytoplasm .
Expression :	Ubiquitous.
Sort :	4472
No4 :	1
Host :	Rabbit
Modifications :	Unmodified

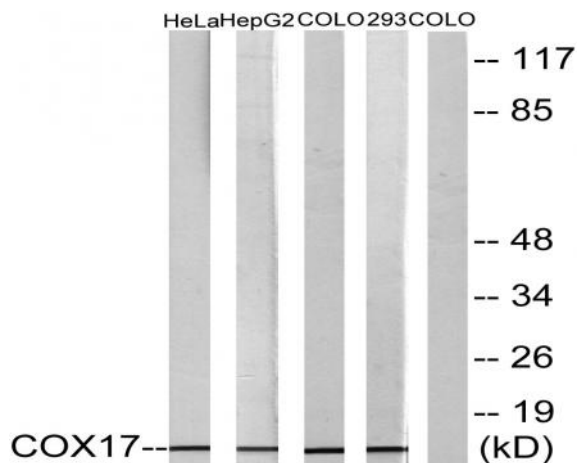
Products Images



Western Blot analysis of various cells using COX17 Polyclonal Antibody



Immunohistochemistry analysis of paraffin-embedded human liver carcinoma tissue, using COX17 Antibody. The picture on the right is blocked with the synthesized peptide.



Western blot analysis of lysates from HeLa, HepG2, COLO, and 293 cells, using COX17 Antibody. The lane on the right is blocked with the synthesized peptide.