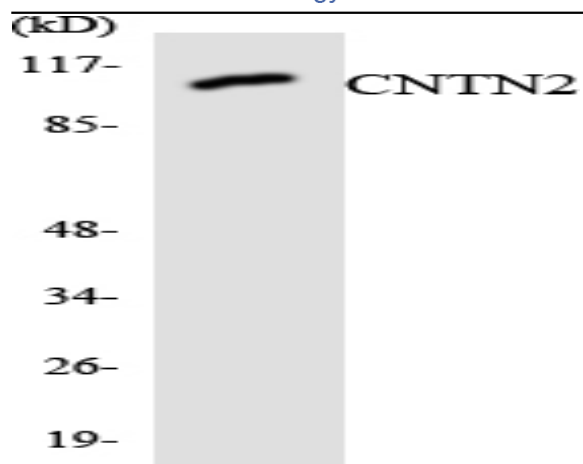


Contactin 2 Polyclonal Antibody

| | |
|------------------------------|---|
| Catalog No : | YT1053 |
| Reactivity : | Human;Mouse;Rat |
| Applications : | WB;ELISA |
| Target : | Contactin 2 |
| Fields : | >>Cell adhesion molecules |
| Gene Name : | CNTN2 |
| Protein Name : | Contactin-2 |
| Human Gene Id : | 6900 |
| Human Swiss Prot No : | Q02246 |
| Mouse Gene Id : | 21367 |
| Mouse Swiss Prot No : | Q61330 |
| Rat Gene Id : | 25356 |
| Rat Swiss Prot No : | P22063 |
| Immunogen : | The antiserum was produced against synthesized peptide derived from human CNTN2. AA range:111-160 |
| Specificity : | Contactin 2 Polyclonal Antibody detects endogenous levels of Contactin 2 protein. |
| Formulation : | Liquid in PBS containing 50% glycerol, 0.5% BSA and 0.02% sodium azide. |
| Source : | Polyclonal, Rabbit,IgG |
| Dilution : | WB 1:500 - 1:2000. ELISA: 1:40000. Not yet tested in other applications. |

| | |
|-------------------------------|--|
| Purification : | The antibody was affinity-purified from rabbit antiserum by affinity-chromatography using epitope-specific immunogen. |
| Concentration : | 1 mg/ml |
| Storage Stability : | -15°C to -25°C/1 year(Do not lower than -25°C) |
| Observed Band : | 120kD |
| Cell Pathway : | Cell adhesion molecules (CAMs); |
| Background : | This gene encodes a member of the contactin family of proteins, part of the immunoglobulin superfamily of cell adhesion molecules. The encoded glycosylphosphatidylinositol (GPI)-anchored neuronal membrane protein plays a role in the proliferation, migration, and axon guidance of neurons of the developing cerebellum. A mutation in this gene may be associated with adult myoclonic epilepsy. [provided by RefSeq, Sep 2016], |
| Function : | function:May play a role in the initial growth and guidance of axons. May be involved in cell adhesion.,similarity:Belongs to the immunoglobulin superfamily. Contactin family.,similarity:Contains 4 fibronectin type-III domains.,similarity:Contains 6 Ig-like C2-type (immunoglobulin-like) domains.,subcellular location:Attached to the neuronal membrane by a GPI-anchor and is also released from neurons., |
| Subcellular Location : | Cell membrane; Lipid-anchor, GPI-anchor. Attached to the neuronal membrane by a GPI-anchor and is also released from neurons. |
| Expression : | Amygdala,Brain,Placenta,Plasma, |
| Sort : | 4431 |
| No4 : | 1 |
| Host : | Rabbit |
| Modifications : | Unmodified |

Products Images



Western blot analysis of the lysates from HUVEC cells using CNTN2 antibody.