

## CD32 Polyclonal Antibody

<b>Catalog No :</b>	YT0754
<b>Reactivity :</b>	Human;Mouse;Rat
<b>Applications :</b>	WB;IHC;IF;ELISA
<b>Target :</b>	CD32
<b>Fields :</b>	>>Phagosome;>>Osteoclast differentiation;>>B cell receptor signaling pathway;>>Fc gamma R-mediated phagocytosis;>>Staphylococcus aureus infection;>>Tuberculosis;>>Measles
<b>Gene Name :</b>	FCGR2B
<b>Protein Name :</b>	Low affinity immunoglobulin gamma Fc region receptor II-b
<b>Human Gene Id :</b>	2213
<b>Human Swiss Prot No :</b>	P31994
<b>Immunogen :</b>	The antiserum was produced against synthesized peptide derived from human CD32. AA range:277-326
<b>Specificity :</b>	CD32 Polyclonal Antibody detects endogenous levels of CD32 protein.
<b>Formulation :</b>	Liquid in PBS containing 50% glycerol, 0.5% BSA and 0.02% sodium azide.
<b>Source :</b>	Polyclonal, Rabbit,IgG
<b>Dilution :</b>	WB 1:500 - 1:2000. IHC 1:100 - 1:300. ELISA: 1:5000.. IF 1:50-200
<b>Purification :</b>	The antibody was affinity-purified from rabbit antiserum by affinity-chromatography using epitope-specific immunogen.
<b>Concentration :</b>	1 mg/ml
<b>Storage Stability :</b>	-15°C to -25°C/1 year(Do not lower than -25°C)

**Observed Band :** 34kD

**Background :** The Fc fragment of IgG receptor IIb encoded by FCGR2B is a low affinity receptor for the Fc region of immunoglobulin gamma complexes. The encoded protein is involved in the phagocytosis of immune complexes and in the regulation of antibody production by B-cells. Variations in this gene may increase susceptibility to systemic lupus erythematosus (SLE). Several transcript variants encoding different isoforms have been found for this gene.

**Tag :** orthogonal

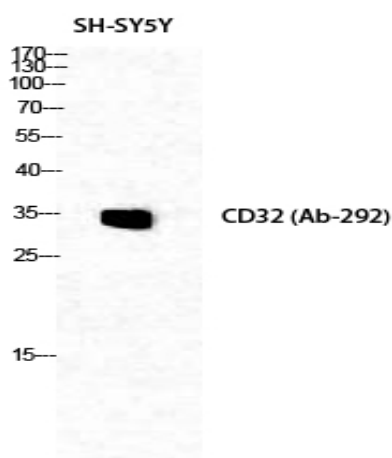
**Sort :** 3543

**No4 :** 1

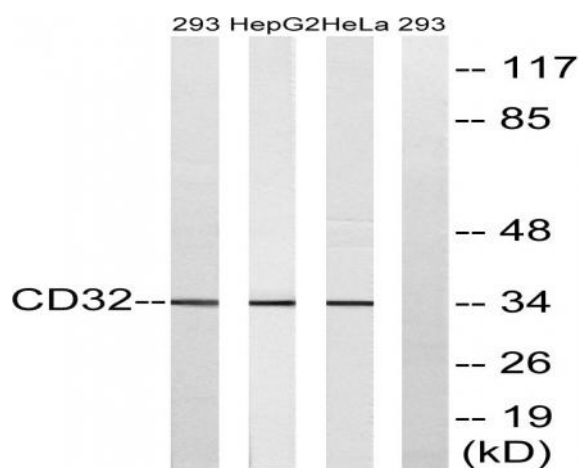
**Host :** Rabbit

**Modifications :** Unmodified

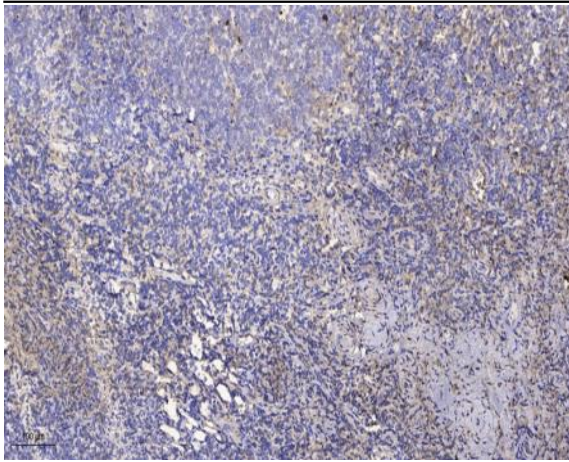
## Products Images



Western Blot analysis of SH-SY5Y cells using CD32 Polyclonal Antibody diluted at 1:1000



Western blot analysis of lysates from 293, HepG2, and HeLa cells, treated with PMA 125ng/ml 30', using CD32 Antibody. The lane on the right is blocked with the synthesized peptide.



Immunohistochemical analysis of paraffin-embedded human tonsil. 1, Antibody was diluted at 1:200(4° overnight). 2, Tris-EDTA,pH9.0 was used for antigen retrieval. 3,Secondary antibody was diluted at 1:200(room temperature, 30min).