

Connexin 25 Polyclonal Antibody

Catalog No :	YT1041
Reactivity :	Human;Rat;Mouse;
Applications :	WB;ELISA
Target :	Connexin 25
Gene Name :	GJB7
Protein Name :	Gap junction beta-7 protein
Human Gene Id :	375519
Human Swiss Prot No :	Q6PEY0
Immunogen :	The antiserum was produced against synthesized peptide derived from human GJB7. AA range:21-70
Specificity :	Connexin 25 Polyclonal Antibody detects endogenous levels of Connexin 25 protein.
Formulation :	Liquid in PBS containing 50% glycerol, 0.5% BSA and 0.02% sodium azide.
Source :	Polyclonal, Rabbit,IgG
Dilution :	WB 1:500 - 1:2000. ELISA: 1:10000. Not yet tested in other applications.
Purification :	The antibody was affinity-purified from rabbit antiserum by affinity-chromatography using epitope-specific immunogen.
Concentration :	1 mg/ml
Storage Stability :	-15°C to -25°C/1 year(Do not lower than -25°C)
Observed Band :	24kD
Background :	Connexins, such as GJB7, are involved in the formation of gap junctions,

intercellular conduits that directly connect the cytoplasm of contacting cells. Each gap junction channel is formed by docking of 2 hemichannels, each of which contains 6 connexin subunits (Sohl et al., 2003 [PubMed 12881038]). [supplied by OMIM, Mar 2008],

Function :

function:One gap junction consists of a cluster of closely packed pairs of transmembrane channels, the connexons, through which materials of low MW diffuse from one cell to a neighboring cell.,similarity:Belongs to the connexin family. Beta-type (group I) subfamily.,subunit:A connexon is composed of a hexamer of connexins.,tissue specificity:Weakly expressed in placenta.,

Subcellular Location :

Cell membrane ; Multi-pass membrane protein . Cell junction, gap junction .

Expression :

Weakly expressed in placenta.

Sort :

4413

No4 :

1

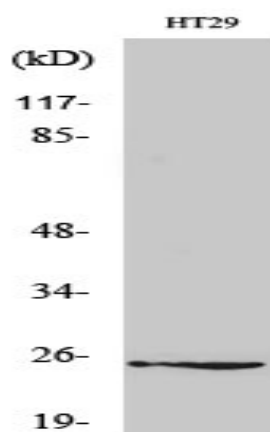
Host :

Rabbit

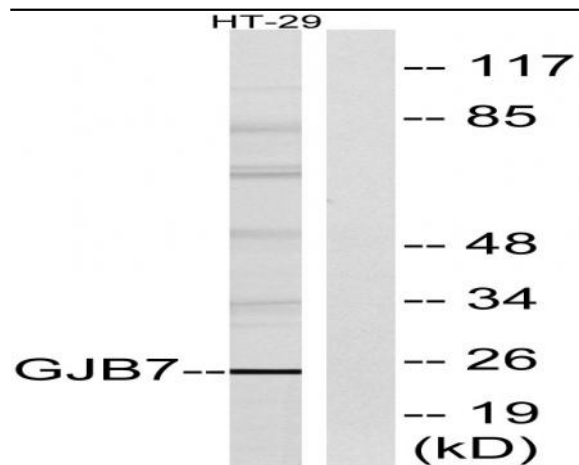
Modifications :

Unmodified

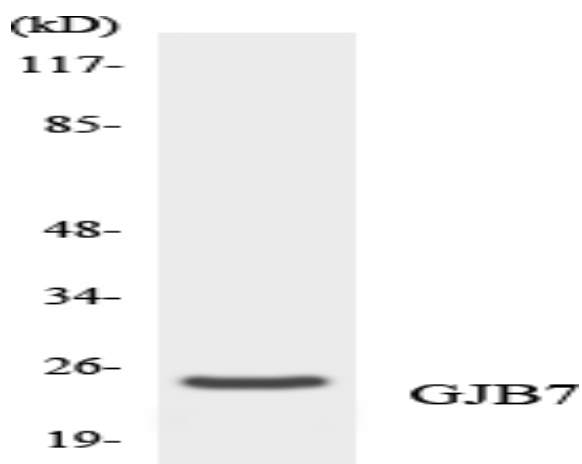
Products Images



Western Blot analysis of various cells using Connexin 25 Polyclonal Antibody diluted at 1:500



Western blot analysis of lysates from HT-29 cells, using GJB7 Antibody. The lane on the right is blocked with the synthesized peptide.



Western blot analysis of the lysates from HeLa cells using GJB7 antibody.