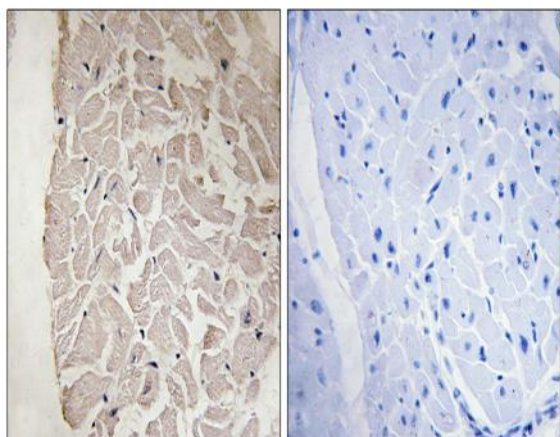


COL6A1 Polyclonal Antibody

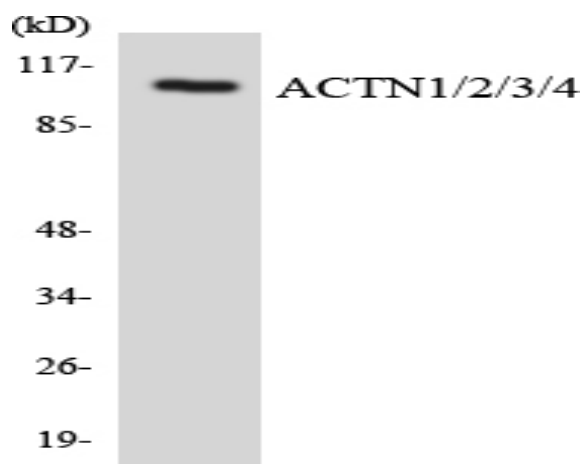
Catalog No :	YT1034
Reactivity :	Human;Mouse
Applications :	IHC;IF;ELISA
Target :	COL6A1
Fields :	>>PI3K-Akt signaling pathway;>>Focal adhesion;>>ECM-receptor interaction;>>Protein digestion and absorption;>>Human papillomavirus infection
Gene Name :	COL6A1
Protein Name :	Collagen alpha-1(VI) chain
Human Gene Id :	1291
Human Swiss Prot No :	P12109
Mouse Gene Id :	12833
Mouse Swiss Prot No :	Q04857
Immunogen :	The antiserum was produced against synthesized peptide derived from human Collagen VI alpha1. AA range:191-240
Specificity :	COL6A1 Polyclonal Antibody detects endogenous levels of COL6A1 protein.
Formulation :	Liquid in PBS containing 50% glycerol, 0.5% BSA and 0.02% sodium azide.
Source :	Polyclonal, Rabbit,IgG
Dilution :	IHC 1:100 - 1:300. ELISA: 1:10000.. IF 1:50-200
Purification :	The antibody was affinity-purified from rabbit antiserum by affinity-chromatography using epitope-specific immunogen.
Concentration :	1 mg/ml

Storage Stability :	-15°C to -25°C/1 year(Do not lower than -25°C)
Molecularweight :	109kD
Cell Pathway :	Focal adhesion;ECM-receptor interaction;
Background :	<p>The collagens are a superfamily of proteins that play a role in maintaining the integrity of various tissues. Collagens are extracellular matrix proteins and have a triple-helical domain as their common structural element. Collagen VI is a major structural component of microfibrils. The basic structural unit of collagen VI is a heterotrimer of the alpha1(VI), alpha2(VI), and alpha3(VI) chains. The alpha2(VI) and alpha3(VI) chains are encoded by the COL6A2 and COL6A3 genes, respectively. The protein encoded by this gene is the alpha 1 subunit of type VI collagen (alpha1(VI) chain). Mutations in the genes that code for the collagen VI subunits result in the autosomal dominant disorder, Bethlem myopathy. [provided by RefSeq, Jul 2008],</p>
Function :	<p>disease:Defects in COL6A1 are a cause of Bethlem myopathy (BM) [MIM:158810]. BM is a rare autosomal dominant proximal myopathy characterized by early childhood onset (complete penetrance by the age of 5) and joint contractures most frequently affecting the elbows and ankles.,function:Collagen VI acts as a cell-binding protein.,PTM:Prolines at the third position of the tripeptide repeating unit (G-X-Y) are hydroxylated in some or all of the chains.,similarity:Belongs to the type VI collagen family.,similarity:Contains 3 VWFA domains.,subunit:Trimers composed of three different chains: alpha-1(VI), alpha-2(VI), and alpha-3(VI) or alpha-5(VI) or alpha-6(VI),</p>
Subcellular Location :	Secreted, extracellular space, extracellular matrix .
Expression :	Blood,Brain,Fetal brain cortex,Fibroblast,Kidney,Liver,Ovary,Placenta,
Sort :	4396
No4 :	1
Host :	Rabbit
Modifications :	Unmodified

Products Images



Immunohistochemistry analysis of paraffin-embedded human heart tissue, using Collagen VI alpha1 Antibody. The picture on the right is blocked with the synthesized peptide.



Western blot analysis of the lysates from COLO205 cells using ACTN1/2/3/4 antibody.