

COL14A1 Polyclonal Antibody

Catalog No :	YT1012
Reactivity :	Human;Mouse
Applications :	IHC;IF;ELISA
Target :	COL14A1
Fields :	>>Protein digestion and absorption
Gene Name :	COL14A1
Protein Name :	Collagen alpha-1(XIV) chain
Human Gene Id :	7373
Human Swiss Prot No :	Q05707
Mouse Swiss Prot No :	Q80X19
Immunogen :	The antiserum was produced against synthesized peptide derived from human N-terminal Collagen XIV alpha1. AA range:71-120
Specificity :	COL14A1 Polyclonal Antibody detects endogenous levels of COL14A1 protein.
Formulation :	Liquid in PBS containing 50% glycerol, 0.5% BSA and 0.02% sodium azide.
Source :	Polyclonal, Rabbit,IgG
Dilution :	IHC 1:100 - 1:300. IF 1:200 - 1:1000. ELISA: 1:40000. Not yet tested in other applications.
Purification :	The antibody was affinity-purified from rabbit antiserum by affinity-chromatography using epitope-specific immunogen.
Concentration :	1 mg/ml
Storage Stability :	-15°C to -25°C/1 year(Do not lower than -25°C)

Molecularweight : 194kD

Background : This gene encodes the alpha chain of type XIV collagen, a member of the FACIT (fibril-associated collagens with interrupted triple helices) collagen family. Type XIV collagen interacts with the fibril surface and is involved in the regulation of fibrillogenesis. [provided by RefSeq, Jan 2013],

Function : function:Plays an adhesive role by integrating collagen bundles. It is probably associated with the surface of interstitial collagen fibrils via COL1. The COL2 domain may then serve as a rigid arm which sticks out from the fibril and protrudes the large N-terminal globular domain into the extracellular space, where it might interact with other matrix molecules or cell surface receptors.,PTM:Lysines at the third position of the tripeptide repeating unit (G-X-Y) are hydroxylated in all cases and bind carbohydrates.,PTM:May contain numerous cysteine residues involved in inter- and intramolecular disulfide bonding.,PTM:Prolines at the third position of the tripeptide repeating unit (G-X-Y) are hydroxylated in some or all of the chains.,similarity:Belongs to the fibril-associated collagens with interrupted helices (FACIT) family.,similarity:Contains 1 TSP N-terminal (TSPN) domain.,similarity:

Subcellular Location : Secreted, extracellular space, extracellular matrix .

Expression : Brain,Liver,Muscle,PNS,Testis,

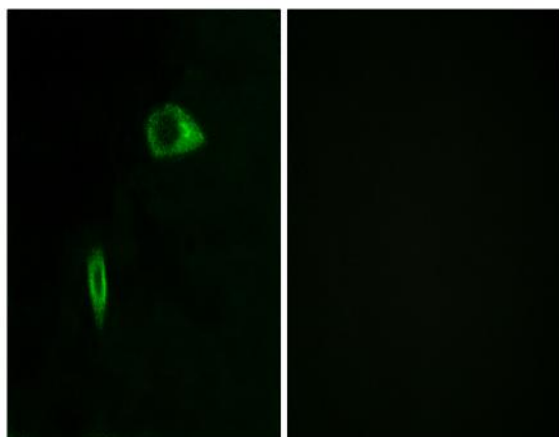
Sort : 4374

No4 : 1

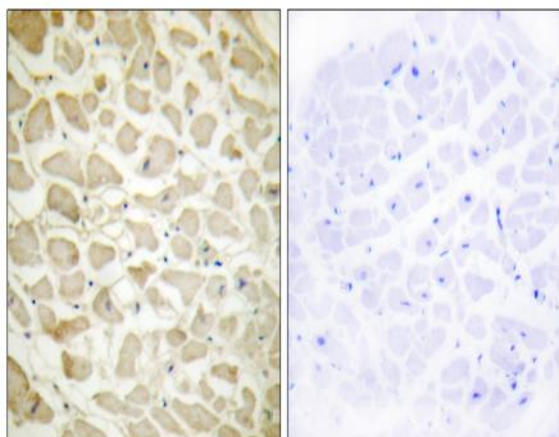
Host : Rabbit

Modifications : Unmodified

Products Images



Immunofluorescence analysis of HeLa cells, using Collagen XIV alpha1 Antibody. The picture on the right is blocked with the synthesized peptide.



Immunohistochemistry analysis of paraffin-embedded human heart tissue, using Collagen XIV alpha1 Antibody. The picture on the right is blocked with the synthesized peptide.