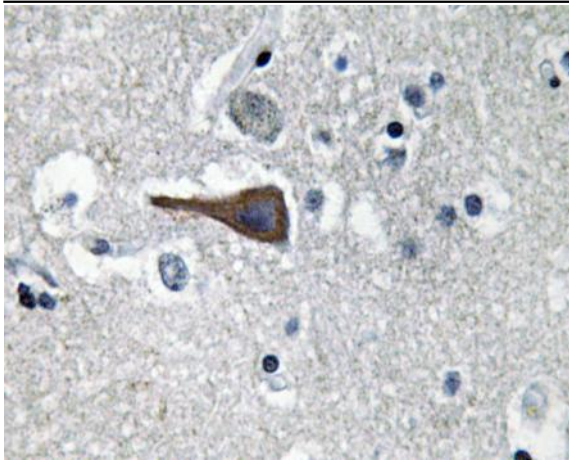


CCK Polyclonal Antibody

Catalog No :	YT0706
Reactivity :	Human;Mouse;Rat
Applications :	IHC;IF;ELISA
Target :	CCK
Fields :	>>Neuroactive ligand-receptor interaction;>>Insulin secretion;>>Pancreatic secretion
Gene Name :	CCK
Protein Name :	Cholecystokinin
Human Gene Id :	885
Human Swiss Prot No :	P06307
Mouse Gene Id :	12424
Mouse Swiss Prot No :	P09240
Rat Gene Id :	25298
Rat Swiss Prot No :	P01355
Immunogen :	The antiserum was produced against synthesized peptide derived from human CCK. AA range:46-95
Specificity :	CCK Polyclonal Antibody detects endogenous levels of CCK protein.
Formulation :	Liquid in PBS containing 50% glycerol, 0.5% BSA and 0.02% sodium azide.
Source :	Polyclonal, Rabbit,IgG
Dilution :	IHC 1:100 - 1:300. ELISA: 1:20000.. IF 1:50-200

Purification :	The antibody was affinity-purified from rabbit antiserum by affinity-chromatography using epitope-specific immunogen.
Concentration :	1 mg/ml
Storage Stability :	-15°C to -25°C/1 year(Do not lower than -25°C)
Molecularweight :	13kD
Background :	This gene encodes a member of the gastrin/cholecystokinin family of proteins. The encoded preproprotein is proteolytically processed to generate multiple protein products, including the peptide hormones cholecystokinin-8, -12, -33, and others. The encoded peptides have been shown to regulate gastric acid secretion and food intake. A sulfated form of cholecystokinin-8 may modulate neuronal activity in the brain. Alternative splicing results in multiple transcript variants. [provided by RefSeq, Nov 2015],
Function :	function:This peptide hormone induces gall bladder contraction and the release of pancreatic enzymes in the gut. Its function in the brain is not clear. Binding to CCK-A receptors stimulates amylase release from the pancreas, binding to CCK-B receptors stimulates gastric acid secretion.,online information:Cholecystokinin entry,PTM:The precursor is cleaved by proteases to produce a number of active cholecystokinins.,similarity:Belongs to the gastrin/cholecystokinin family.,subunit:Binds to CCK-A receptors in the pancreas and CCK-B receptors in the brain.,
Subcellular Location :	Secreted.
Expression :	Brain,Pancreas,
Sort :	3322
No4 :	1
Host :	Rabbit
Modifications :	Unmodified

Products Images



Immunohistochemistry analysis of CCK antibody in paraffin-embedded human brain tissue.