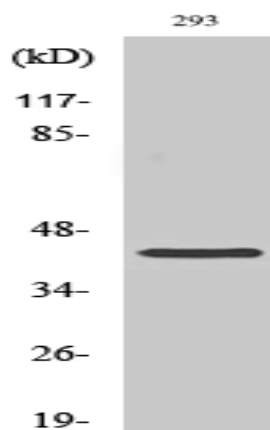


CBX6 Polyclonal Antibody

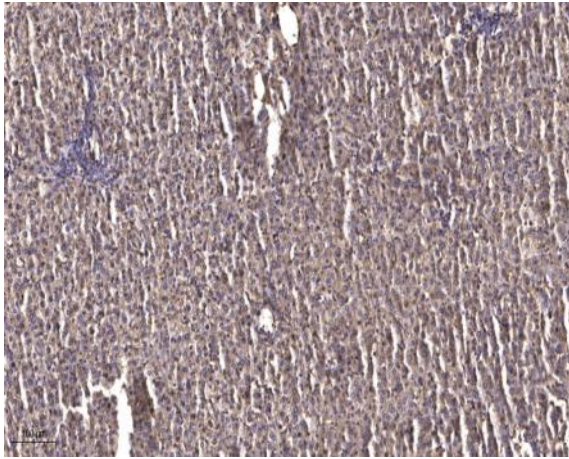
Catalog No :	YT0699
Reactivity :	Human;Mouse;Rat
Applications :	WB;IHC;IF;ELISA
Target :	CBX6
Gene Name :	CBX6
Protein Name :	Chromobox protein homolog 6
Human Gene Id :	23466
Human Swiss Prot No :	O95503
Mouse Gene Id :	494448
Mouse Swiss Prot No :	Q9DBY5
Immunogen :	The antiserum was produced against synthesized peptide derived from human CBX6. AA range:10-59
Specificity :	CBX6 Polyclonal Antibody detects endogenous levels of CBX6 protein.
Formulation :	Liquid in PBS containing 50% glycerol, 0.5% BSA and 0.02% sodium azide.
Source :	Polyclonal, Rabbit,IgG
Dilution :	WB 1:500 - 1:2000. IHC 1:100 - 1:300. ELISA: 1:20000.. IF 1:50-200
Purification :	The antibody was affinity-purified from rabbit antiserum by affinity-chromatography using epitope-specific immunogen.
Concentration :	1 mg/ml
Storage Stability :	-15°C to -25°C/1 year(Do not lower than -25°C)

Observed Band :	44kD
Background :	function:Involved in maintaining the transcriptionally repressive state of genes. Modifies chromatin, rendering it heritably changed in its expressibility.,similarity:Contains 1 chromo domain.,subunit:Component of the chromatin-associated polycomb complex (PcG).,
Function :	function:Involved in maintaining the transcriptionally repressive state of genes. Modifies chromatin, rendering it heritably changed in its expressibility.,similarity:Contains 1 chromo domain.,subunit:Component of the chromatin-associated polycomb complex (PcG).,
Subcellular Location :	Nucleus . Chromosome . Uniformely distributed in the nucleoplasm (PubMed:18927235). Localizes to the inactivated X chromosome in females (By similarity). .
Expression :	Lung,Uterus,
Tag :	orthogonal
Sort :	3288
No4 :	1
Host :	Rabbit
Modifications :	Unmodified

Products Images



Western Blot analysis of various cells using CBX6 Polyclonal Antibody cells nucleus extracted by Minute TM Cytoplasmic and Nuclear Fractionation kit (SC-003, Inventbiotech, MN, USA).



Immunohistochemical analysis of paraffin-embedded human liver cancer. 1, Antibody was diluted at 1:200(4° overnight). 2, Tris-EDTA,pH9.0 was used for antigen retrieval. 3,Secondary antibody was diluted at 1:200(room temperature, 45min).