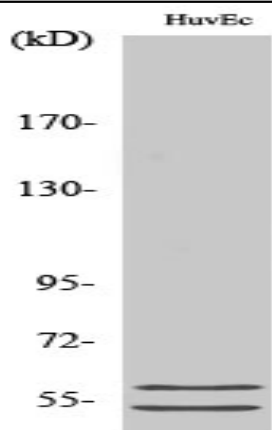


CBG Polyclonal Antibody

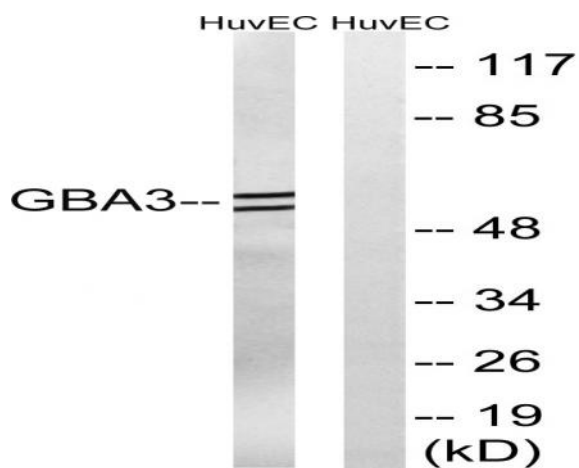
Catalog No :	YT0689
Reactivity :	Human
Applications :	WB;ELISA
Target :	CBG
Fields :	>>Starch and sucrose metabolism;>>Metabolic pathways
Gene Name :	GBA3
Protein Name :	Cytosolic beta-glucosidase
Human Gene Id :	57733
Human Swiss Prot No :	Q9H227
Immunogen :	The antiserum was produced against synthesized peptide derived from human GBA3. AA range:291-340
Specificity :	CBG Polyclonal Antibody detects endogenous levels of CBG protein.
Formulation :	Liquid in PBS containing 50% glycerol, 0.5% BSA and 0.02% sodium azide.
Source :	Polyclonal, Rabbit,IgG
Dilution :	WB 1:500 - 1:2000. ELISA: 1:20000. Not yet tested in other applications.
Purification :	The antibody was affinity-purified from rabbit antiserum by affinity-chromatography using epitope-specific immunogen.
Concentration :	1 mg/ml
Storage Stability :	-15°C to -25°C/1 year(Do not lower than -25°C)
Observed Band :	54-58kD

Cell Pathway :	Cyanoamino acid metabolism;Starch and sucrose metabolism;
Background :	The protein encoded by this gene is an enzyme that can hydrolyze several types of glycosides. This gene is a polymorphic pseudogene, with the most common allele being the functional allele that encodes the full-length protein. Some individuals, as represented by the reference genome allele, contain a single nucleotide polymorphism that results in a premature stop codon in the coding region, and therefore this allele is pseudogenic due to the failure to produce a functional full-length protein. Alternative splicing of this gene results in multiple transcript variants. [provided by RefSeq, Mar 2013],
Function :	catalytic activity:Hydrolysis of terminal, non-reducing beta-D-glucosyl residues with release of beta-D-glucose.,enzyme regulation:Inhibited by 2,4-dinitrophenyl-2-fluoro-2-deoxy-beta-D-glucopyranoside and sodium taurocholate.,function:Glycosidase probably involved in the intestinal absorption and metabolism of dietary flavonoid glycosides. Able to hydrolyze a broad variety of glycosides including phytoestrogens, flavonols, flavones, flavanones and cyanogens.,PTM:The N-terminus is blocked.,similarity:Belongs to the glycosyl hydrolase 1 family.,similarity:Belongs to the glycosyl hydrolase 1 family. Klotho subfamily.,tissue specificity:Present in small intestine (at protein level). Expressed in liver, small intestine, colon, spleen and kidney. Down-regulated in renal cell carcinomas and hepatocellular carcinomas.,
Subcellular Location :	Cytoplasm, cytosol .
Expression :	Present in small intestine (at protein level). Expressed in liver, small intestine, colon, spleen and kidney. Down-regulated in renal cell carcinomas and hepatocellular carcinomas.
Tag :	hot
Sort :	3264
No4 :	1
Host :	Rabbit
Modifications :	Unmodified

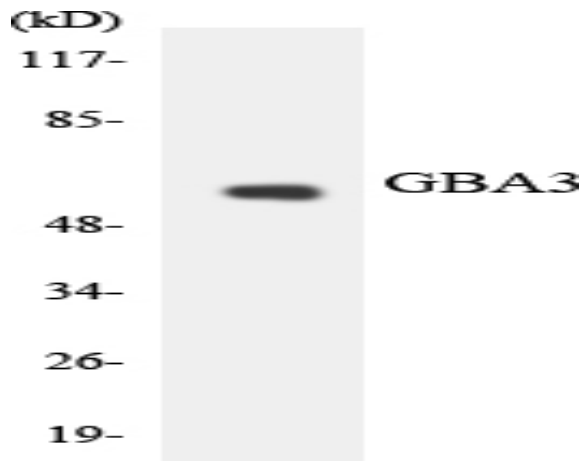
Products Images



Western Blot analysis of various cells using CBG Polyclonal Antibody diluted at 1:500



Western blot analysis of lysates from HUVEC cells, using GBA3 Antibody. The lane on the right is blocked with the synthesized peptide.



Western blot analysis of the lysates from HeLa cells using GBA3 antibody.