

## Casein Kinase Ia Polyclonal Antibody

|                              |   |
|------------------------------|---|
| <b>Catalog No :</b>          | YT0645  |
| <b>Reactivity :</b>          | Human;Mouse;Rat   |
| <b>Applications :</b>        | WB;IHC;IF;ELISA   |
| <b>Target :</b>              | Casein Kinase Ia  |
| <b>Fields :</b>              | >>Wnt signaling pathway;>>Hedgehog signaling pathway;>>Alzheimer disease;>>Pathways of neurodegeneration - multiple diseases;>>Human papillomavirus infection;>>Breast cancer;>>Hepatocellular carcinoma;>>Gastric cancer |
| <b>Gene Name :</b>           | CSNK1A1   |
| <b>Protein Name :</b>        | Casein kinase I isoform alpha   |
| <b>Human Gene Id :</b>       | 1452  |
| <b>Human Swiss Prot No :</b> | P48729  |
| <b>Mouse Swiss Prot No :</b> | Q8BK63  |
| <b>Rat Gene Id :</b>         | 113927  |
| <b>Rat Swiss Prot No :</b>   | P97633  |
| <b>Immunogen :</b>           | The antiserum was produced against synthesized peptide derived from human CKI-alpha. AA range:126-175   |
| <b>Specificity :</b>         | Casein Kinase Ia Polyclonal Antibody detects endogenous levels of Casein Kinase Ia protein.   |
| <b>Formulation :</b>         | Liquid in PBS containing 50% glycerol, 0.5% BSA and 0.02% sodium azide.   |
| <b>Source :</b>              | Polyclonal, Rabbit,IgG  |
| <b>Dilution :</b>            | WB 1:500 - 1:2000. IHC 1:100 - 1:300. IF 1:200 - 1:1000. ELISA: 1:20000. Not  |

yet tested in other applications.

---

**Purification :** The antibody was affinity-purified from rabbit antiserum by affinity-chromatography using epitope-specific immunogen.

---

**Concentration :** 1 mg/ml

---

**Storage Stability :** -15°C to -25°C/1 year(Do not lower than -25°C)

---

**Observed Band :** 35kD

---

**Cell Pathway :** WNT;WNT-T CELLHedgehog;

---

**Background :** catalytic activity:ATP + a protein = ADP + a phosphoprotein.,function:Casein kinases are operationally defined by their preferential utilization of acidic proteins such as caseins as substrates. It can phosphorylate a large number of proteins. Participates in Wnt signaling. Phosphorylates CTNNB1 on 'Ser-45'.,similarity:Belongs to the protein kinase superfamily.,similarity:Belongs to the protein kinase superfamily. CK1 Ser/Thr protein kinase family. Casein kinase I subfamily.,similarity:Contains 1 protein kinase domain.,subunit:Monomer. Interacts with the Axin complex.,

---

**Function :** catalytic activity:ATP + a protein = ADP + a phosphoprotein.,function:Casein kinases are operationally defined by their preferential utilization of acidic proteins such as caseins as substrates. It can phosphorylate a large number of proteins. Participates in Wnt signaling. Phosphorylates CTNNB1 on 'Ser-45'.,similarity:Belongs to the protein kinase superfamily.,similarity:Belongs to the protein kinase superfamily. CK1 Ser/Thr protein kinase family. Casein kinase I subfamily.,similarity:Contains 1 protein kinase domain.,subunit:Monomer. Interacts with the Axin complex.,

---

**Subcellular Location :** Cytoplasm . Cytoplasm, cytoskeleton, microtubule organizing center, centrosome . Chromosome, centromere, kinetochore . Nucleus speckle . Cytoplasm, cytoskeleton, cilium basal body . Cytoplasm, cytoskeleton, spindle . Localizes to the centrosome in interphase cells, and to kinetochore fibers during mitosis. Also recruited to the keratin cytoskeleton (PubMed:23902688) .

---

**Expression :** Brain,Epithelium,Liver,Lung,Placenta,Skin,

---

**Tag :** hot

---

**Sort :** 3137

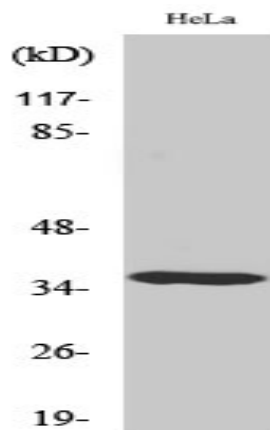
---

**No4 :** 1

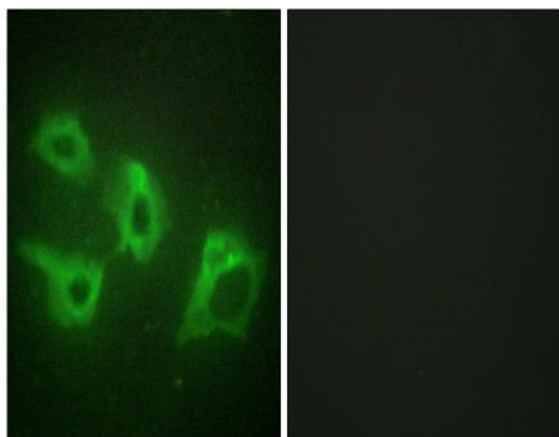
---

**Host :** Rabbit**Modifications :** Unmodified

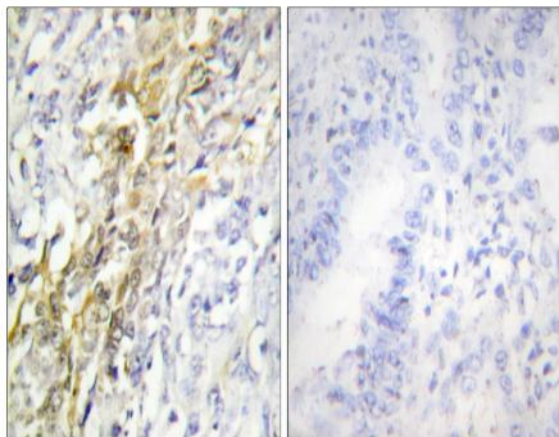
## Products Images



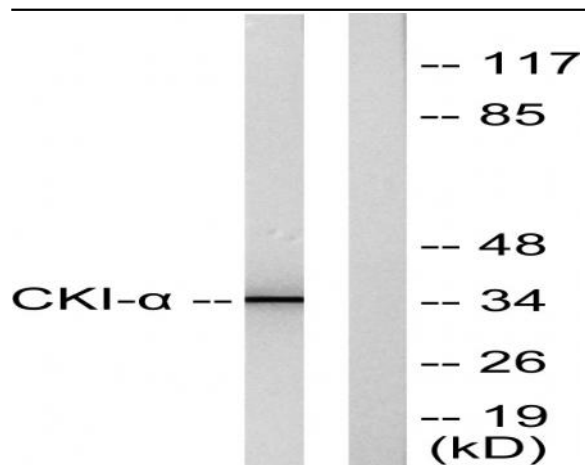
Western Blot analysis of various cells using Casein Kinase Ia Polyclonal Antibody



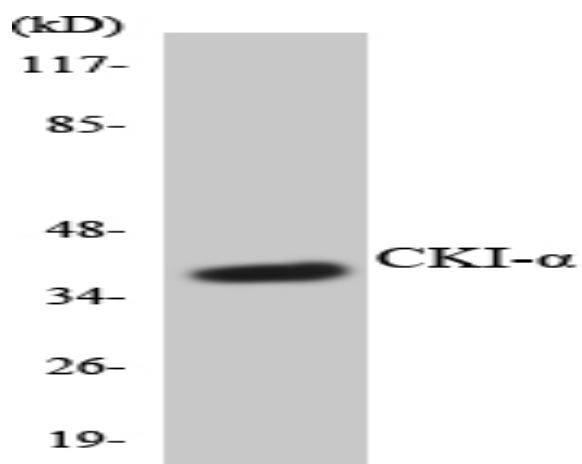
Immunofluorescence analysis of HeLa cells, using CKI-alpha Antibody. The picture on the right is blocked with the synthesized peptide.



Immunohistochemistry analysis of paraffin-embedded human lung carcinoma tissue, using CKI-alpha Antibody. The picture on the right is blocked with the synthesized peptide.



Western blot analysis of lysates from HeLa cells, using CKI-alpha Antibody. The lane on the right is blocked with the synthesized peptide.



Western blot analysis of the lysates from HT-29 cells using CKI-α antibody.