

## CaMKI $\beta$ Polyclonal Antibody

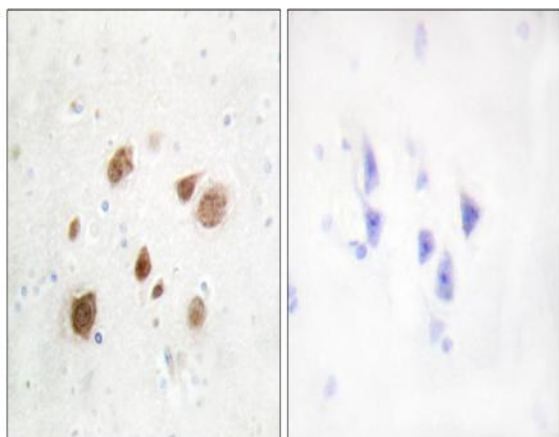
<b>Catalog No :</b>	YT0629
<b>Reactivity :</b>	Human;Mouse;Rat
<b>Applications :</b>	WB;IHC;IF;ELISA
<b>Target :</b>	CaMKI $\beta$
<b>Gene Name :</b>	PNCK
<b>Protein Name :</b>	Calcium/calmodulin-dependent protein kinase type 1B
<b>Human Gene Id :</b>	139728
<b>Human Swiss Prot No :</b>	Q6P2M8
<b>Mouse Gene Id :</b>	93843
<b>Mouse Swiss Prot No :</b>	Q9QYK9
<b>Rat Gene Id :</b>	29660
<b>Rat Swiss Prot No :</b>	O70150
<b>Immunogen :</b>	The antiserum was produced against synthesized peptide derived from human CaMK1-beta. AA range:161-210
<b>Specificity :</b>	CaMKI $\beta$ Polyclonal Antibody detects endogenous levels of CaMKI $\beta$ protein.
<b>Formulation :</b>	Liquid in PBS containing 50% glycerol, 0.5% BSA and 0.02% sodium azide.
<b>Source :</b>	Polyclonal, Rabbit,IgG
<b>Dilution :</b>	WB 1:500 - 1:2000. IHC 1:100 - 1:300. ELISA: 1:10000.. IF 1:50-200
<b>Purification :</b>	The antibody was affinity-purified from rabbit antiserum by affinity-chromatography using epitope-specific immunogen.

---

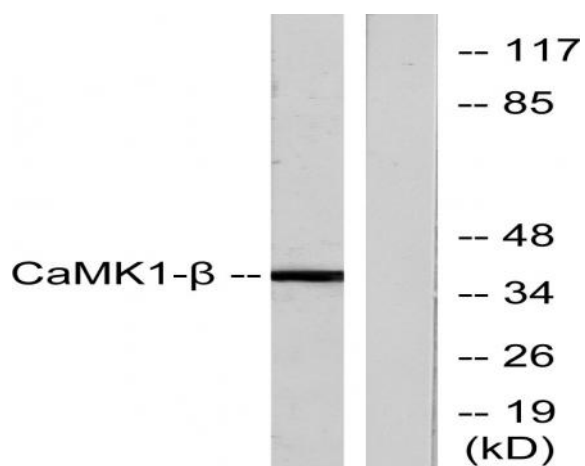
<b>Concentration :</b>	1 mg/ml
<b>Storage Stability :</b>	-15°C to -25°C/1 year(Do not lower than -25°C)
<b>Observed Band :</b>	38kD
<b>Background :</b>	PNCK is a member of the calcium/calmodulin-dependent protein kinase family of protein serine/threonine kinases (see CAMK1; MIM 604998) (Gardner et al., 2000 [PubMed 10673339]).[supplied by OMIM, Mar 2008],
<b>Function :</b>	catalytic activity:ATP + a protein = ADP + a phosphoprotein.,enzyme regulation:Activated by Ca(2+)/calmodulin.,function:Calcium/calmodulin-dependent protein kinase belonging to a proposed calcium-triggered signaling cascade. In vitro phosphorylates CREB1 and SYN1/synapsin I. Phosphorylates and activates CAMK1.,PTM:Phosphorylated by CAMKK1.,similarity:Belongs to the protein kinase superfamily.,similarity:Belongs to the protein kinase superfamily. CAMK Ser/Thr protein kinase family. CaMK subfamily.,similarity:Contains 1 protein kinase domain.,
<b>Subcellular Location :</b>	Cytoplasm . Nucleus .
<b>Expression :</b>	Brain,Liver,Placenta,Thalamus,
<b>Tag :</b>	orthogonal
<b>Sort :</b>	3103
<b>No4 :</b>	1
<b>Host :</b>	Rabbit
<b>Modifications :</b>	Unmodified

---

## Products Images



Immunohistochemistry analysis of paraffin-embedded human brain tissue, using CaMK1-beta Antibody. The picture on the right is blocked with the synthesized peptide.



Western blot analysis of lysates from LOVO cells, treated with H<sub>2</sub>O<sub>2</sub> 100uM 30', using CaMK1-beta Antibody. The lane on the right is blocked with the synthesized peptide.