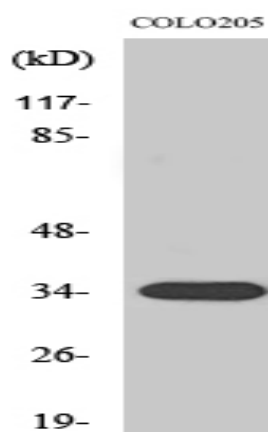


## Calponin 2 Polyclonal Antibody

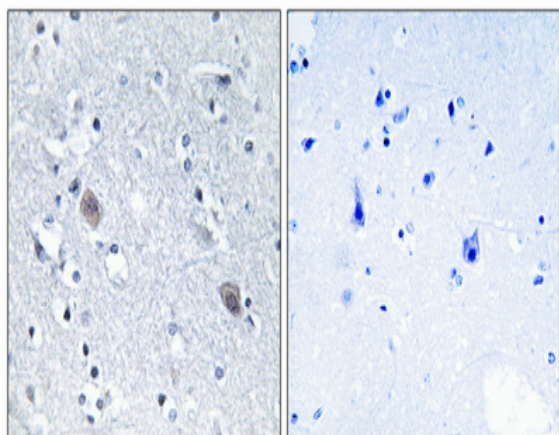
<b>Catalog No :</b>	YT0619
<b>Reactivity :</b>	Human;Mouse
<b>Applications :</b>	WB;IHC;IF;ELISA
<b>Target :</b>	Calponin 2
<b>Gene Name :</b>	CNN2
<b>Protein Name :</b>	Calponin-2
<b>Human Gene Id :</b>	1265
<b>Human Swiss Prot No :</b>	Q99439
<b>Mouse Gene Id :</b>	12798
<b>Mouse Swiss Prot No :</b>	Q08093
<b>Immunogen :</b>	The antiserum was produced against synthesized peptide derived from human CNN2. AA range:121-170
<b>Specificity :</b>	Calponin 2 Polyclonal Antibody detects endogenous levels of Calponin 2 protein.
<b>Formulation :</b>	Liquid in PBS containing 50% glycerol, 0.5% BSA and 0.02% sodium azide.
<b>Source :</b>	Polyclonal, Rabbit,IgG
<b>Dilution :</b>	WB 1:500 - 1:2000. IHC 1:100 - 1:300. IF 1:200 - 1:1000. ELISA: 1:5000. Not yet tested in other applications.
<b>Purification :</b>	The antibody was affinity-purified from rabbit antiserum by affinity-chromatography using epitope-specific immunogen.
<b>Concentration :</b>	1 mg/ml
<b>Storage Stability :</b>	-15°C to -25°C/1 year(Do not lower than -25°C)

**Observed Band :** 33kD**Background :** The protein encoded by this gene, which can bind actin, calmodulin, troponin C, and tropomyosin, may function in the structural organization of actin filaments. The encoded protein could play a role in smooth muscle contraction and cell adhesion. Several pseudogenes of this gene have been identified, and are present on chromosomes 1, 2, 3, 6, 9, 11, 13, 15, 16, 21 and 22. Alternative splicing results in multiple transcript variants encoding different isoforms. [provided by RefSeq, Jan 2015],**Function :** function:Thin filament-associated protein that is implicated in the regulation and modulation of smooth muscle contraction. It is capable of binding to actin, calmodulin, troponin C and tropomyosin. The interaction of calponin with actin inhibits the actomyosin Mg-ATPase activity.,similarity:Belongs to the calponin family.,similarity:Contains 1 CH (calponin-homology) domain.,similarity:Contains 3 calponin-like repeats.,tissue specificity:Heart and smooth muscle.,**Subcellular Location :** stress fiber,cytoskeleton,cell-cell junction,cell-cell adherens junction,focal adhesion,membrane,extracellular exosome,**Expression :** Heart and smooth muscle.**Sort :** 3072**No4 :** 1**Host :** Rabbit**Modifications :** Unmodified

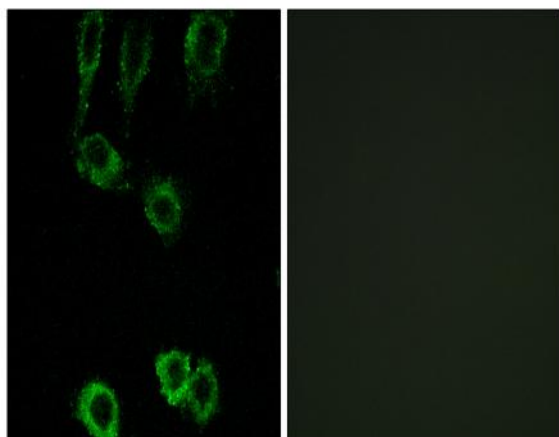
## Products Images



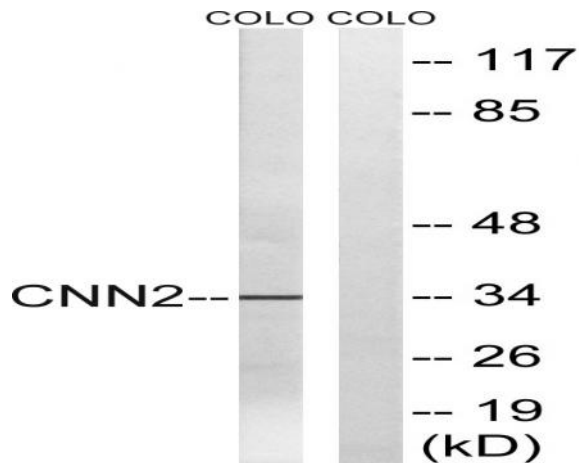
Western Blot analysis of various cells using Calponin 2 Polyclonal Antibody



Immunohistochemical analysis of paraffin-embedded Human brain. Antibody was diluted at 1:100(4° overnight). High-pressure and temperature Tris-EDTA,pH8.0 was used for antigen retrieval. Negative control (right) obtained from antibody was pre-absorbed by immunogen peptide.



Immunofluorescence analysis of A549 cells, using CNN2 Antibody. The picture on the right is blocked with the synthesized peptide.



Western blot analysis of lysates from COLO cells, using CNN2 Antibody. The lane on the right is blocked with the synthesized peptide.