

Calpain 2 Polyclonal Antibody

Catalog No :	YT0618
Reactivity :	Human;Mouse;Rat
Applications :	IHC;IF;ELISA
Target :	Calpain 2
Fields :	>>Protein processing in endoplasmic reticulum;>>Apoptosis;>>Necroptosis;>>Cellular senescence;>>Focal adhesion;>>Alzheimer disease;>>Pathways of neurodegeneration - multiple diseases;>>Shigellosis
Gene Name :	CAPN2
Protein Name :	Calpain-2 catalytic subunit
Human Gene Id :	824
Human Swiss Prot No :	P17655
Mouse Gene Id :	12334
Mouse Swiss Prot No :	O08529
Rat Gene Id :	29154
Rat Swiss Prot No :	Q07009
Immunogen :	The antiserum was produced against synthesized peptide derived from human Calpain 2. AA range:305-354
Specificity :	Calpain 2 Polyclonal Antibody detects endogenous levels of Calpain 2 protein.
Formulation :	Liquid in PBS containing 50% glycerol, 0.5% BSA and 0.02% sodium azide.
Source :	Polyclonal, Rabbit,IgG

Dilution : IHC 1:100 - 1:300. ELISA: 1:40000.. IF 1:50-200

Purification : The antibody was affinity-purified from rabbit antiserum by affinity-chromatography using epitope-specific immunogen.

Concentration : 1 mg/ml

Storage Stability : -15°C to -25°C/1 year(Do not lower than -25°C)

Molecularweight : 80kD

Cell Pathway : Apoptosis_Inhibition;Apoptosis_Mitochondrial;Apoptosis_Overview;Focal adhesion;Alzheimer's disease;

Background : The calpains, calcium-activated neutral proteases, are nonlysosomal, intracellular cysteine proteases. The mammalian calpains include ubiquitous, stomach-specific, and muscle-specific proteins. The ubiquitous enzymes consist of heterodimers with distinct large, catalytic subunits associated with a common small, regulatory subunit. This gene encodes the large subunit of the ubiquitous enzyme, calpain 2. Multiple heterogeneous transcriptional start sites in the 5' UTR have been reported. Two transcript variants encoding different isoforms have been found for this gene. [provided by RefSeq, Mar 2009],

Function : catalytic activity:Broad endopeptidase specificity.,cofactor:Binds 3 calcium ions.,enzyme regulation:Activated by 200-1000 micromolar concentrations of calcium and inhibited by calpastatin.,function:Calcium-regulated non-lysosomal thiol-protease which catalyze limited proteolysis of substrates involved in cytoskeletal remodeling and signal transduction.,sequence caution:Contaminating sequence. Potential poly-A sequence.,similarity:Belongs to the peptidase C2 family.,similarity:Contains 1 calpain catalytic domain.,similarity:Contains 3 EF-hand domains.,subcellular location:Translocates to the plasma membrane upon Ca(2+) binding.,subunit:Forms a heterodimer with a small (regulatory) subunit (CAPNS1),tissue specificity:Ubiquitous.,

Subcellular Location : Cytoplasm. Cell membrane. Translocates to the plasma membrane upon Ca(2+) binding.

Expression : Ubiquitous.

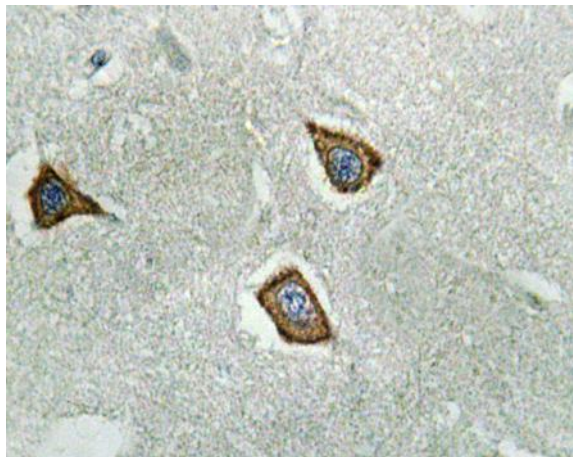
Sort : 3070

No4 : 1

Host : Rabbit

Modifications : Unmodified

Products Images



Immunohistochemistry analysis of Calpain2 antibody in paraffin-embedded human brain tissue.