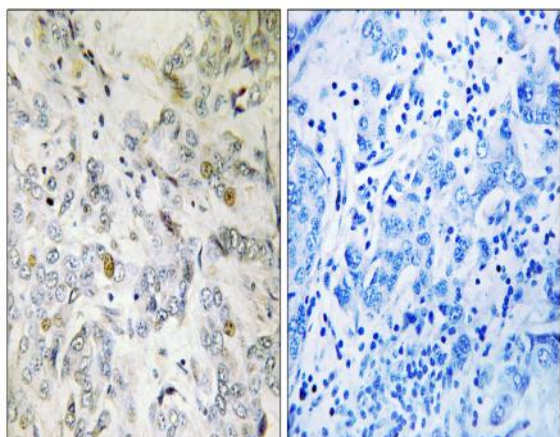


CIP29 Polyclonal Antibody

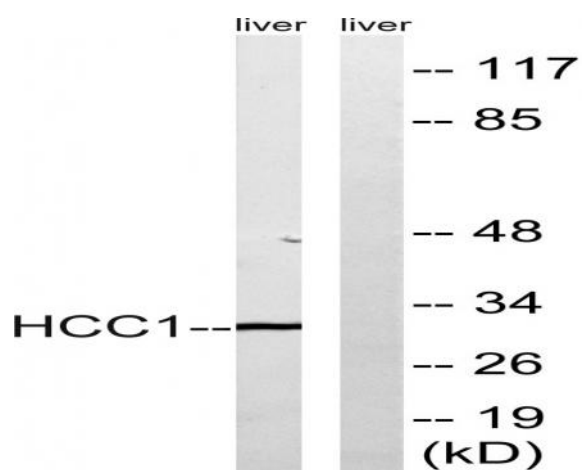
Catalog No :	YT0930
Reactivity :	Human;Mouse;Rat
Applications :	WB;IHC;IF;ELISA
Target :	CIP29
Gene Name :	SARNP
Protein Name :	SAP domain-containing ribonucleoprotein
Human Gene Id :	84324
Human Swiss Prot No :	P82979
Mouse Gene Id :	66118
Mouse Swiss Prot No :	Q9D1J3
Rat Gene Id :	362819
Rat Swiss Prot No :	Q498U4
Immunogen :	The antiserum was produced against synthesized peptide derived from human HCC1. AA range:147-196
Specificity :	CIP29 Polyclonal Antibody detects endogenous levels of CIP29 protein.
Formulation :	Liquid in PBS containing 50% glycerol, 0.5% BSA and 0.02% sodium azide.
Source :	Polyclonal, Rabbit,IgG
Dilution :	WB 1:500 - 1:2000. IHC 1:100 - 1:300. ELISA: 1:10000.. IF 1:50-200
Purification :	The antibody was affinity-purified from rabbit antiserum by affinity-chromatography using epitope-specific immunogen.

Concentration :	1 mg/ml
Storage Stability :	-15°C to -25°C/1 year(Do not lower than -25°C)
Observed Band :	30kD
Background :	This gene encodes a protein that is upregulated in response to various cytokines. The encoded protein may play a role in cell cycle progression. A translocation between this gene and the myeloid/lymphoid leukemia gene, resulting in expression of a chimeric protein, has been associated with acute myelomonocytic leukemia. Pseudogenes exist on chromosomes 7 and 8. Alternatively spliced transcript variants have been described. [provided by RefSeq, Feb 2009],
Function :	transcription, regulation of transcription, DNA-dependent, regulation of translation, posttranscriptional regulation of gene expression, regulation of cellular protein metabolic process, regulation of transcription, regulation of RNA metabolic process,
Subcellular Location :	Nucleus. Nucleus speckle.
Expression :	Low expression in spleen, liver, pancreas, testis, thymus, heart, and kidney. Increased levels are seen in hepatocellular carcinoma and pancreatic adenocarcinoma.
Sort :	3999
No4 :	1
Host :	Rabbit
Modifications :	Unmodified

Products Images



Immunohistochemistry analysis of paraffin-embedded human breast carcinoma tissue, using HCC1 Antibody. The picture on the right is blocked with the synthesized peptide.



Western blot analysis of lysates from mouse liver, using HCC1 Antibody. The lane on the right is blocked with the synthesized peptide.