

CHSY2 Polyclonal Antibody

Catalog No :	YT0924
Reactivity :	Human;Mouse;Rat
Applications :	WB;IHC;IF;ELISA
Target :	CHSY2
Fields :	>>Glycosaminoglycan biosynthesis - chondroitin sulfate / dermatan sulfate;>>Metabolic pathways
Gene Name :	CHPF
Protein Name :	Chondroitin sulfate synthase 2
Human Gene Id :	79586
Human Swiss Prot No :	Q8IZ52
Mouse Gene Id :	74241
Mouse Swiss Prot No :	Q6IQX7
Immunogen :	The antiserum was produced against synthesized peptide derived from human CHSY2. AA range:631-680
Specificity :	CHSY2 Polyclonal Antibody detects endogenous levels of CHSY2 protein.
Formulation :	Liquid in PBS containing 50% glycerol, 0.5% BSA and 0.02% sodium azide.
Source :	Polyclonal, Rabbit,IgG
Dilution :	WB 1:500 - 1:2000. IHC 1:100 - 1:300. IF 1:200 - 1:1000. ELISA: 1:40000. Not yet tested in other applications.
Purification :	The antibody was affinity-purified from rabbit antiserum by affinity-chromatography using epitope-specific immunogen.

Concentration : 1 mg/ml

Storage Stability : -15°C to -25°C/1 year(Do not lower than -25°C)

Observed Band : 85kD

Cell Pathway : Chondroitin sulfate biosynthesis;

Background : catalytic activity:UDP-alpha-D-glucuronate + N-acetyl-beta-D-galactosaminy-(1->4)-beta-D-glucuronosyl-proteoglycan = UDP + beta-D-glucuronosyl-(1->3)-N-acetyl-beta-D-galactosaminy-(1->4)-beta-D-glucuronosyl-proteoglycan.,catalytic activity:UDP-N-acetyl-D-galactosamine + beta-D-glucuronosyl-(1->3)-N-acetyl-beta-D-galactosaminy-proteoglycan = UDP + N-acetyl-beta-D-galactosaminy-(1->4)-beta-D-glucuronosyl-(1->3)-N-acetyl-beta-D-galactosaminy-proteoglycan.,cofactor:Divalent cations. Highest activities are measured with manganese. Can also utilize cobalt.,function:Has both beta-1,3-glucuronic acid and beta-1,4-N-acetylgalactosamine transferase activity. Transfers glucuronic acid (GlcUA) from UDP-GlcUA and N-acetylgalactosamine (GalNAc) from UDP-GalNAc to the non-reducing end of the elongating chondroitin polymer.,online information:GlycoGene database,PTM:Phosphorylated upon DNA damage, probably by ATM or ATR.,similarity:Belongs to the chondroitin N-acetylgalactosaminytransferase family.,subunit:Binds CHSY1.,tissue specificity:Ubiquitous. Highly expressed in pancreas, ovary, brain, heart, skeletal muscle, colon, kidney, liver, stomach, small intestine and placenta.,

Function : catalytic activity:UDP-alpha-D-glucuronate + N-acetyl-beta-D-galactosaminy-(1->4)-beta-D-glucuronosyl-proteoglycan = UDP + beta-D-glucuronosyl-(1->3)-N-acetyl-beta-D-galactosaminy-(1->4)-beta-D-glucuronosyl-proteoglycan.,catalytic activity:UDP-N-acetyl-D-galactosamine + beta-D-glucuronosyl-(1->3)-N-acetyl-beta-D-galactosaminy-proteoglycan = UDP + N-acetyl-beta-D-galactosaminy-(1->4)-beta-D-glucuronosyl-(1->3)-N-acetyl-beta-D-galactosaminy-proteoglycan.,cofactor:Divalent cations. Highest activities are measured with manganese. Can also utilize cobalt.,function:Has both beta-1,3-glucuronic acid and beta-1,4-N-acetylgalactosamine transferase activity. Transfers glucuronic acid (GlcUA) from UDP-GlcUA and N-acetylgalactosamine (GalNAc) from UDP-GalNAc to the non-reducing end of the elongating chondroitin polymer.,online information:GlycoGene database,PTM:Phosphorylated upon DNA damage, p

Subcellular Location : [Isoform 1]: Golgi apparatus, Golgi stack membrane ; Single-pass type II membrane protein . Cytoplasm, cytosol .; [Isoform 3]: Cytoplasm, cytosol . Mitochondrion .; [Isoform 2]: Mitochondrion matrix .

Expression : Ubiquitous. Highly expressed in pancreas, ovary, brain, heart, skeletal muscle, colon, kidney, liver, stomach, spleen and placenta. ; [Isoform 2]: Expressed in brain, spleen, ovary, testis, lung and peripheral mononuclear cells. ; [Isoform 3]: Also ubiquitous.

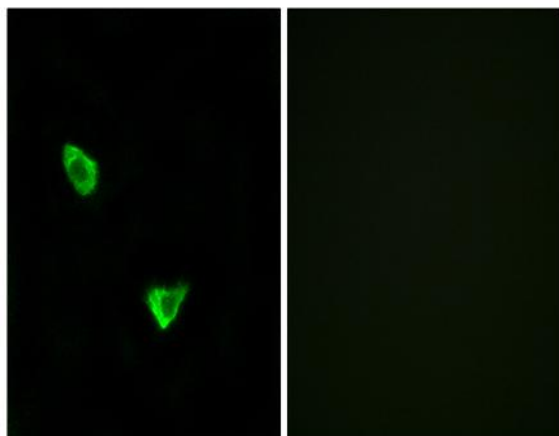
Sort : 3986

No4 : 1

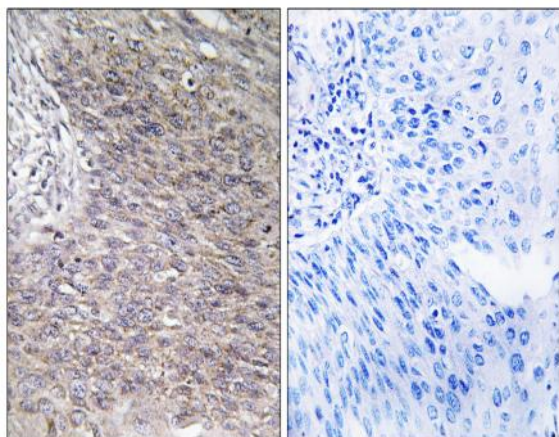
Host : Rabbit

Modifications : Unmodified

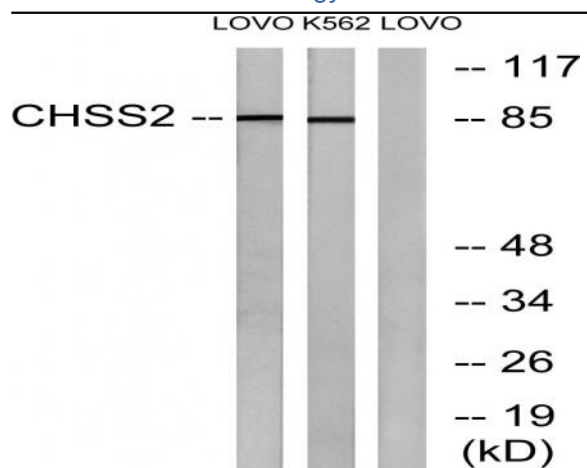
Products Images



Immunofluorescence analysis of MCF7 cells, using CHSY2 Antibody. The picture on the right is blocked with the synthesized peptide.



Immunohistochemistry analysis of paraffin-embedded human cervix carcinoma tissue, using CHSY2 Antibody. The picture on the right is blocked with the synthesized peptide.



Western blot analysis of lysates from LOVO and K562 cells, using CHSY2 Antibody. The lane on the right is blocked with the synthesized peptide.