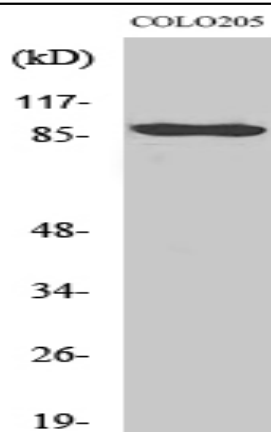


Cadherin-9 Polyclonal Antibody

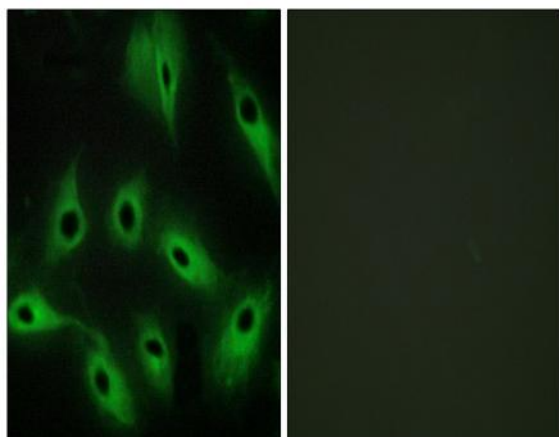
| | |
|------------------------------|---|
| Catalog No : | YT0604 |
| Reactivity : | Human;Mouse |
| Applications : | WB;IHC;IF;ELISA |
| Target : | Cadherin-9 |
| Gene Name : | CDH9 |
| Protein Name : | Cadherin-9 |
| Human Gene Id : | 1007 |
| Human Swiss Prot No : | Q9ULB4 |
| Mouse Swiss Prot No : | P70407 |
| Immunogen : | The antiserum was produced against synthesized peptide derived from human CDH9. AA range:201-250 |
| Specificity : | Cadherin-9 Polyclonal Antibody detects endogenous levels of Cadherin-9 protein. |
| Formulation : | Liquid in PBS containing 50% glycerol, 0.5% BSA and 0.02% sodium azide. |
| Source : | Polyclonal, Rabbit,IgG |
| Dilution : | WB 1:500 - 1:2000. IHC 1:100 - 1:300. IF 1:200 - 1:1000. ELISA: 1:5000. Not yet tested in other applications. |
| Purification : | The antibody was affinity-purified from rabbit antiserum by affinity-chromatography using epitope-specific immunogen. |
| Concentration : | 1 mg/ml |
| Storage Stability : | -15°C to -25°C/1 year(Do not lower than -25°C) |

| | |
|-------------------------------|---|
| Observed Band : | 89kD |
| Cell Pathway : | Adherens_Junction |
| Background : | <p>This gene encodes a type II classical cadherin from the cadherin superfamily, integral membrane proteins that mediate calcium-dependent cell-cell adhesion. Mature cadherin proteins are composed of a large N-terminal extracellular domain, a single membrane-spanning domain, and a small, highly conserved C-terminal cytoplasmic domain. The extracellular domain consists of 5 subdomains, each containing a cadherin motif, and appears to determine the specificity of the protein's homophilic cell adhesion activity. Type II (atypical) cadherins are defined based on their lack of a HAV cell adhesion recognition sequence specific to type I cadherins. [provided by RefSeq, Jul 2008],</p> |
| Function : | <p>function:Cadherins are calcium dependent cell adhesion proteins. They preferentially interact with themselves in a homophilic manner in connecting cells; cadherins may thus contribute to the sorting of heterogeneous cell types.,similarity:Contains 5 cadherin domains.,</p> |
| Subcellular Location : | Cell membrane ; Single-pass type I membrane protein . |
| Expression : | PCR rescued clones, |
| Sort : | 3039 |
| No4 : | 1 |
| Host : | Rabbit |
| Modifications : | Unmodified |

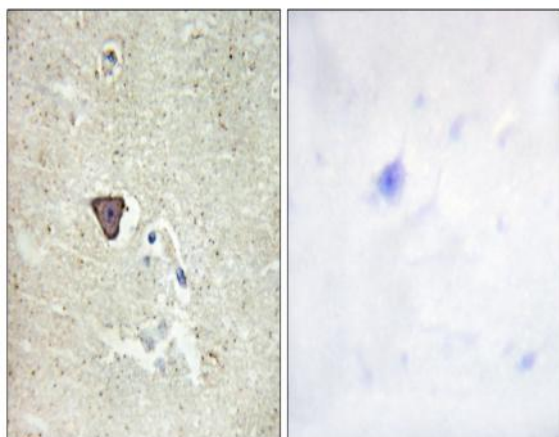
Products Images



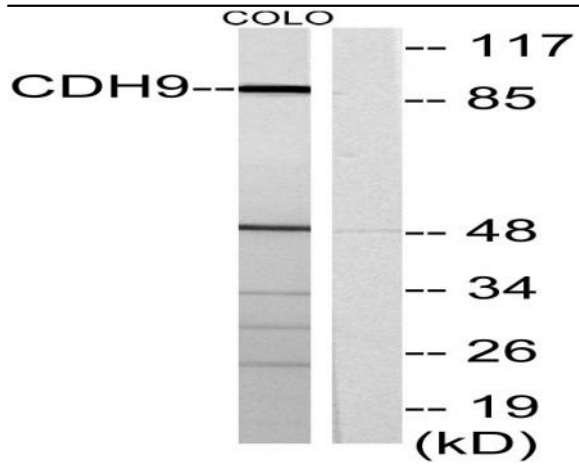
Western Blot analysis of various cells using Cadherin-9 Polyclonal Antibody



Immunofluorescence analysis of HeLa cells, using CDH9 Antibody. The picture on the right is blocked with the synthesized peptide.



Immunohistochemistry analysis of paraffin-embedded human brain tissue, using CDH9 Antibody. The picture on the right is blocked with the synthesized peptide.



Western blot analysis of lysates from COLO cells, using CDH9 Antibody. The lane on the right is blocked with the synthesized peptide.