

## Cadherin-7 Polyclonal Antibody

<b>Catalog No :</b>	YT0602
<b>Reactivity :</b>	Human;Mouse;Rat
<b>Applications :</b>	WB;IHC;IF;ELISA
<b>Target :</b>	Cadherin-7
<b>Gene Name :</b>	CDH7
<b>Protein Name :</b>	Cadherin-7
<b>Human Gene Id :</b>	1005
<b>Human Swiss Prot No :</b>	Q9ULB5
<b>Mouse Gene Id :</b>	241201
<b>Mouse Swiss Prot No :</b>	Q8BM92
<b>Rat Gene Id :</b>	29162
<b>Rat Swiss Prot No :</b>	Q5DWV2
<b>Immunogen :</b>	The antiserum was produced against synthesized peptide derived from human CDH7. AA range:651-700
<b>Specificity :</b>	Cadherin-7 Polyclonal Antibody detects endogenous levels of Cadherin-7 protein.
<b>Formulation :</b>	Liquid in PBS containing 50% glycerol, 0.5% BSA and 0.02% sodium azide.
<b>Source :</b>	Polyclonal, Rabbit,IgG
<b>Dilution :</b>	WB 1:500 - 1:2000. IHC 1:100 - 1:300. IF 1:200 - 1:1000. ELISA: 1:20000. Not yet tested in other applications.
<b>Purification :</b>	The antibody was affinity-purified from rabbit antiserum by affinity-

---

chromatography using epitope-specific immunogen.

---

**Concentration :** 1 mg/ml

---

**Storage Stability :** -15°C to -25°C/1 year(Do not lower than -25°C)

---

**Observed Band :** 87kD

---

**Cell Pathway :** Adherens\_Junction

---

**Background :** This gene encodes a type II classical cadherin of the cadherin superfamily. Alternative splicing results in multiple transcript variants, at least one of which encodes a preproprotein that is proteolytically processed to generate the mature glycoprotein. This calcium dependent cell-cell adhesion molecule is comprised of five extracellular cadherin repeats, a transmembrane region and a highly conserved cytoplasmic tail. Type II (atypical) cadherins are defined based on their lack of a histidine-alanine-valine (HAV) cell adhesion recognition sequence specific to type I cadherins. Cadherins mediate cell-cell binding in a homophilic manner, contributing to the sorting of heterogeneous cell types. Mutations in this gene may be associated with bipolar disease in human patients. This gene is present in a gene cluster on chromosome 18. [provided by RefSeq, May 2016],

---

**Function :** function:Cadherins are calcium dependent cell adhesion proteins. They preferentially interact with themselves in a homophilic manner in connecting cells; cadherins may thus contribute to the sorting of heterogeneous cell types.,similarity:Contains 5 cadherin domains.,

---

**Subcellular Location :** Cell membrane; Single-pass type I membrane protein.

---

**Expression :** Brain,

---

**Sort :** 3037

---

**No4 :** 1

---

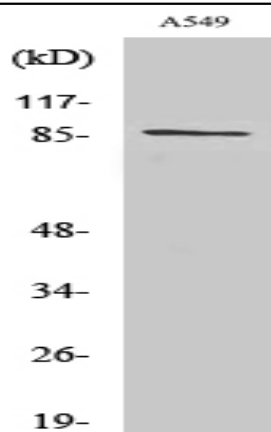
**Host :** Rabbit

---

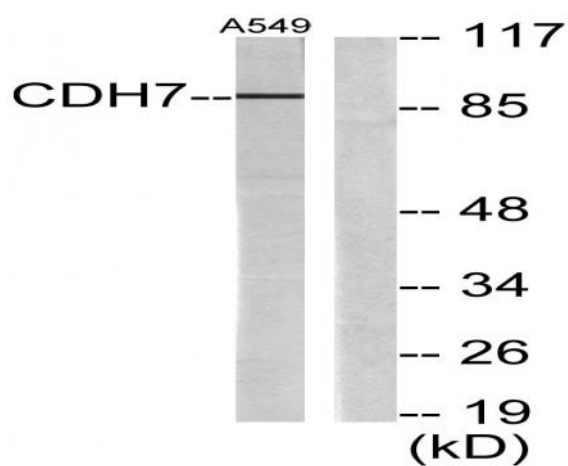
**Modifications :** Unmodified

---

**Products Images**



Western Blot analysis of various cells using Cadherin-7 Polyclonal Antibody diluted at 1:1000



Western blot analysis of lysates from A549 cells, using CDH7 Antibody. The lane on the right is blocked with the synthesized peptide.