

## Cadherin-20 Polyclonal Antibody

<b>Catalog No :</b>	YT0597
<b>Reactivity :</b>	Human;Mouse;Rat
<b>Applications :</b>	IHC;IF;ELISA
<b>Target :</b>	Cadherin-20
<b>Gene Name :</b>	CDH20
<b>Protein Name :</b>	Cadherin-20
<b>Human Gene Id :</b>	28316
<b>Human Swiss Prot No :</b>	Q9HBT6
<b>Mouse Gene Id :</b>	23836
<b>Mouse Swiss Prot No :</b>	Q9Z0M3
<b>Rat Gene Id :</b>	363948
<b>Rat Swiss Prot No :</b>	Q5DWV1
<b>Immunogen :</b>	The antiserum was produced against synthesized peptide derived from human CDH20. AA range:111-160
<b>Specificity :</b>	Cadherin-20 Polyclonal Antibody detects endogenous levels of Cadherin-20 protein.
<b>Formulation :</b>	Liquid in PBS containing 50% glycerol, 0.5% BSA and 0.02% sodium azide.
<b>Source :</b>	Polyclonal, Rabbit,IgG
<b>Dilution :</b>	IHC 1:100 - 1:300. IF 1:200 - 1:1000. ELISA: 1:10000. Not yet tested in other applications.
<b>Purification :</b>	The antibody was affinity-purified from rabbit antiserum by affinity-

---

chromatography using epitope-specific immunogen.

---

**Concentration :** 1 mg/ml

---

**Storage Stability :** -15°C to -25°C/1 year(Do not lower than -25°C)

---

**Molecularweight :** 89kD

---

**Cell Pathway :** Adherens\_Junction

---

**Background :** This gene is a type II classical cadherin from the cadherin superfamily and one of three cadherin 7-like genes located in a cluster on chromosome 18. The encoded membrane protein is a calcium dependent cell-cell adhesion glycoprotein comprised of five extracellular cadherin repeats, a transmembrane region and a highly conserved cytoplasmic tail. Type II (atypical) cadherins are defined based on their lack of a HAV cell adhesion recognition sequence specific to type I cadherins. Since disturbance of intracellular adhesion is a prerequisite for invasion and metastasis of tumor cells, cadherins are considered prime candidates for tumor suppressor genes. [provided by RefSeq, Jul 2008],

---

**Function :** function:Cadherins are calcium dependent cell adhesion proteins.,function:Cadherins are calcium dependent cell adhesion proteins. They preferentially interact with themselves in a homophilic manner in connecting cells; cadherins may thus contribute to the sorting of heterogeneous cell types.,similarity:Contains 5 cadherin domains.,tissue specificity:Expressed in placenta, adult brain, and fetal brain.,

---

**Subcellular Location :** Cell membrane; Single-pass type I membrane protein.

---

**Expression :** Expressed in placenta, adult brain, and fetal brain.

---

**Sort :** 3032

---

**No4 :** 1

---

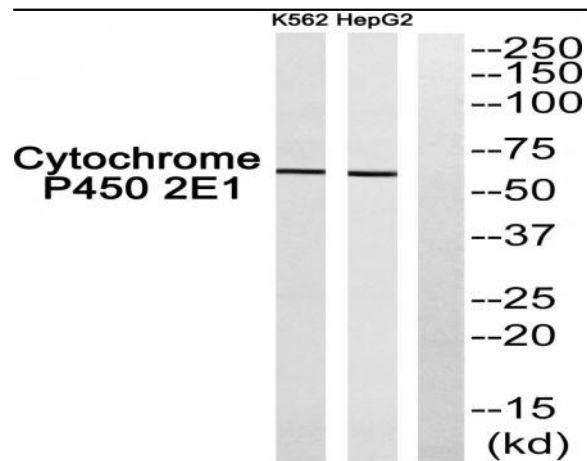
**Host :** Rabbit

---

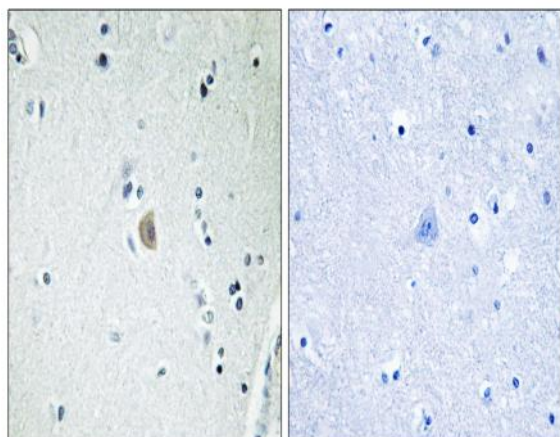
**Modifications :** Unmodified

---

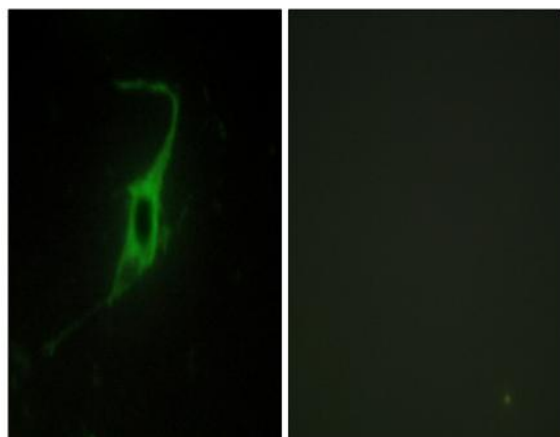
**Products Images**



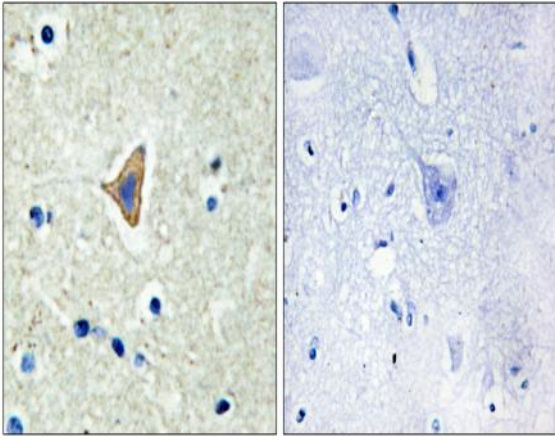
Western blot analysis of CDH20 Antibody. The lane on the right is blocked with the CDH20 peptide.



Immunohistochemistry analysis of paraffin-embedded human brain, using CDH20 Antibody. The lane on the right is blocked with the CDH20 peptide.



Immunofluorescence analysis of NIH/3T3 cells, using CDH20 Antibody. The picture on the right is blocked with the synthesized peptide.



Immunohistochemistry analysis of paraffin-embedded human brain tissue, using CDH20 Antibody. The picture on the right is blocked with the synthesized peptide.