

ChemR23 Polyclonal Antibody

Catalog No :	YT0897
Reactivity :	Human;Mouse;Rat
Applications :	WB;IHC;IF;ELISA
Target :	ChemR23
Gene Name :	CMKLR1
Protein Name :	Chemokine-like receptor 1
Human Gene Id :	1240
Human Swiss Prot No :	Q99788
Mouse Gene Id :	14747
Mouse Swiss Prot No :	P97468
Rat Swiss Prot No :	O35786
Immunogen :	The antiserum was produced against synthesized peptide derived from human CMKLR1. AA range:221-270
Specificity :	ChemR23 Polyclonal Antibody detects endogenous levels of ChemR23 protein.
Formulation :	Liquid in PBS containing 50% glycerol, 0.5% BSA and 0.02% sodium azide.
Source :	Polyclonal, Rabbit,IgG
Dilution :	WB 1:500 - 1:2000. IHC: 1:100-300 ELISA: 1:20000. IF 1:100-300 Not yet tested in other applications.
Purification :	The antibody was affinity-purified from rabbit antiserum by affinity-chromatography using epitope-specific immunogen.
Concentration :	1 mg/ml

Storage Stability : -15°C to -25°C/1 year(Do not lower than -25°C)

Observed Band : 42kD

Background : developmental stage:Expressed during bone development.,function:Orphan receptor. Could be a chemotactic peptide receptor. May have a function in bone metabolism. Acts as a coreceptor for several SIV strains (SIVMAC316, SIVMAC239, SIVMACL7E-FR and SIVSM62A), as well as a primary HIV-1 strain (92UG024-2).,similarity:Belongs to the G-protein coupled receptor 1 family.,tissue specificity:Prominently expressed in developing osseous and cartilaginous tissue. Also found in adult parathyroid glands.,

Function : developmental stage:Expressed during bone development.,function:Orphan receptor. Could be a chemotactic peptide receptor. May have a function in bone metabolism. Acts as a coreceptor for several SIV strains (SIVMAC316, SIVMAC239, SIVMACL7E-FR and SIVSM62A), as well as a primary HIV-1 strain (92UG024-2).,similarity:Belongs to the G-protein coupled receptor 1 family.,tissue specificity:Prominently expressed in developing osseous and cartilaginous tissue. Also found in adult parathyroid glands.,

Subcellular Location : Cell membrane ; Multi-pass membrane protein . Internalizes efficiently in response to RARRES2. .

Expression : Prominently expressed in developing osseous and cartilaginous tissue. Also found in adult parathyroid glands. Expressed in cardiovascular system, brain, kidney, gastrointestinal tissues and myeloid tissues. Expressed in a broad array of tissues associated with hematopoietic and immune function including, spleen, thymus, appendix, lymph node, bone marrow and fetal liver. Among leukocyte populations abundant expression in monocyte-derived macrophage and immature dendritic cells (DCs). High expression in blood monocytes and low levels in polymorphonuclear cells and T-cells. Expressed on endothelial cells. Highly expressed in differentiating adipocytes.

Tag : hot

Sort : 1340

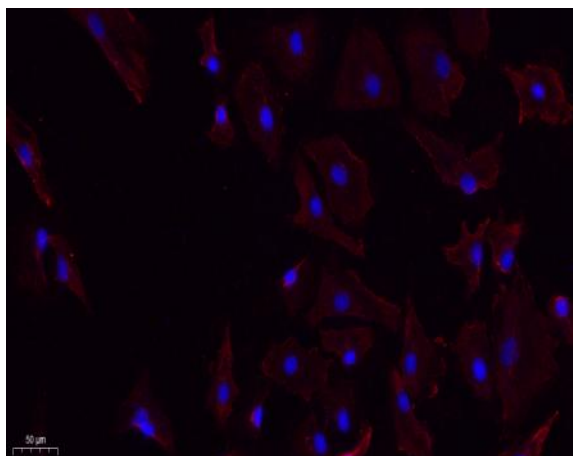
No3 : ab230442

No4 : 1

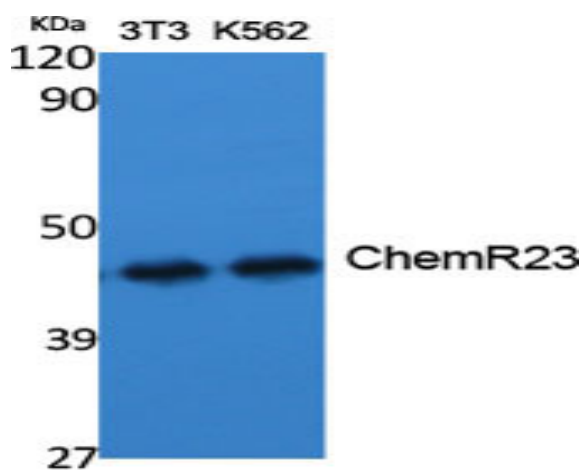
Host : Rabbit

Modifications : Unmodified

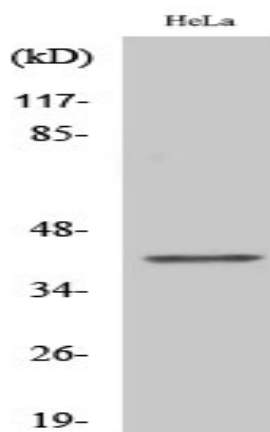
Products Images



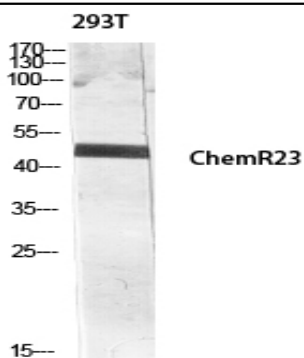
Immunofluorescence analysis of A549. 1,primary Antibody(red) was diluted at 1:200(4°C overnight). 2, Goat Anti Rabbit IgG (H&L) - Alexa Fluor 594 Secondary antibody was diluted at 1:1000(room temperature, 50min).3, Picture B: DAPI(blue) 10min.



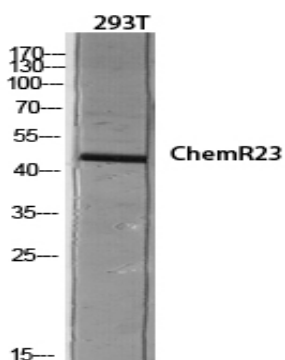
Western Blot analysis of various cells using ChemR23 Polyclonal Antibody diluted at 1:1000



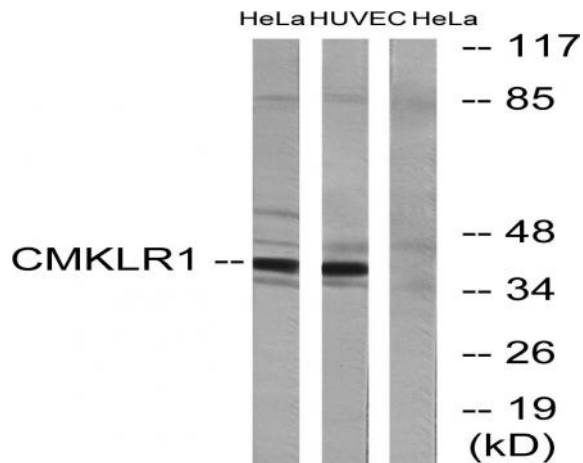
Western Blot analysis of COLO205 cells using ChemR23 Polyclonal Antibody diluted at 1:1000



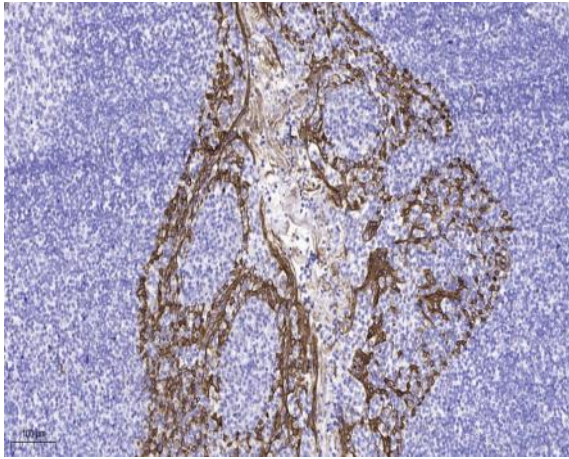
Western blot analysis of 293T lysis using ChemR23 antibody.
Antibody was diluted at 1:1000



Western blot analysis of 293T lysis using ChemR23 antibody.
Antibody was diluted at 1:1000



Western blot analysis of lysates from HeLa and HUVEC cells,
using CMKLR1 Antibody. The lane on the right is blocked with the
synthesized peptide.



Immunohistochemical analysis of paraffin-embedded human tonsil. 1, Antibody was diluted at 1:200(4° overnight). 2, Tris-EDTA,pH9.0 was used for antigen retrieval. 3,Secondary antibody was diluted at 1:200(room temperature, 45min).