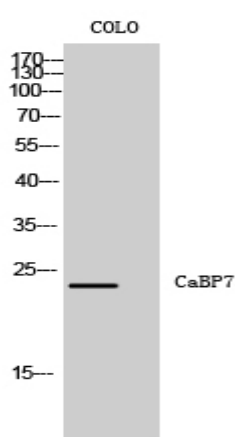


## CaBP7 Polyclonal Antibody

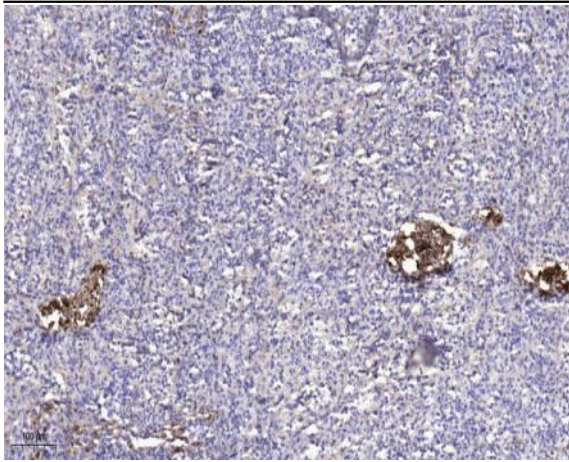
<b>Catalog No :</b>	YT0590
<b>Reactivity :</b>	Human;Mouse;Rat
<b>Applications :</b>	WB;IHC;IF;ELISA
<b>Target :</b>	CaBP7
<b>Gene Name :</b>	CABP7
<b>Protein Name :</b>	Calcium-binding protein 7
<b>Human Gene Id :</b>	164633
<b>Human Swiss Prot No :</b>	Q86V35
<b>Mouse Gene Id :</b>	192650
<b>Mouse Swiss Prot No :</b>	Q91ZM8
<b>Rat Gene Id :</b>	360970
<b>Rat Swiss Prot No :</b>	Q66H96
<b>Immunogen :</b>	The antiserum was produced against synthesized peptide derived from human CABP7. AA range:1-50
<b>Specificity :</b>	CaBP7 Polyclonal Antibody detects endogenous levels of CaBP7 protein.
<b>Formulation :</b>	Liquid in PBS containing 50% glycerol, 0.5% BSA and 0.02% sodium azide.
<b>Source :</b>	Polyclonal, Rabbit,IgG
<b>Dilution :</b>	WB 1:500 - 1:2000. IHC 1:100 - 1:300. ELISA: 1:10000.. IF 1:50-200
<b>Purification :</b>	The antibody was affinity-purified from rabbit antiserum by affinity-chromatography using epitope-specific immunogen.

<b>Concentration :</b>	1 mg/ml
<b>Storage Stability :</b>	-15°C to -25°C/1 year(Do not lower than -25°C)
<b>Observed Band :</b>	25kD
<b>Background :</b>	similarity:Contains 2 EF-hand domains.,
<b>Function :</b>	similarity:Contains 2 EF-hand domains.,
<b>Subcellular Location :</b>	Golgi apparatus, trans-Golgi network membrane ; Single-pass type IV membrane protein . Cytoplasm, perinuclear region . Cell membrane ; Single-pass type IV membrane protein .
<b>Expression :</b>	Brain,Epithelium,
<b>Sort :</b>	3009
<b>No4 :</b>	1
<b>Host :</b>	Rabbit
<b>Modifications :</b>	Unmodified

## Products Images



Western Blot analysis of COLO cells using CaBP7 Polyclonal Antibody diluted at 1:1000



Immunohistochemical analysis of paraffin-embedded human spleen. 1, Antibody was diluted at 1:200(4° overnight). 2, Tris-EDTA,pH9.0 was used for antigen retrieval. 3,Secondary antibody was diluted at 1:200(room temperature, 45min).