

C1QBP Polyclonal Antibody

Catalog No :	YT0564
Reactivity :	Human;Mouse;Rat
Applications :	WB;IHC;IF;ELISA
Target :	C1QBP
Gene Name :	C1QBP
Protein Name :	Complement component 1 Q subcomponent-binding protein mitochondrial
Human Gene Id :	708
Human Swiss Prot No :	Q07021
Mouse Swiss Prot No :	O35658
Rat Gene Id :	29681
Rat Swiss Prot No :	O35796
Immunogen :	The antiserum was produced against synthesized peptide derived from human C1QBP. AA range:61-110
Specificity :	C1QBP Polyclonal Antibody detects endogenous levels of C1QBP protein.
Formulation :	Liquid in PBS containing 50% glycerol, 0.5% BSA and 0.02% sodium azide.
Source :	Polyclonal, Rabbit,IgG
Dilution :	WB 1:500 - 1:2000. IHC 1:100 - 1:300. ELISA: 1:40000.. IF 1:50-200
Purification :	The antibody was affinity-purified from rabbit antiserum by affinity-chromatography using epitope-specific immunogen.
Concentration :	1 mg/ml

Storage Stability : -15°C to -25°C/1 year(Do not lower than -25°C)

Observed Band : 32kD

Background : The human complement subcomponent C1q associates with C1r and C1s in order to yield the first component of the serum complement system. The protein encoded by this gene is known to bind to the globular heads of C1q molecules and inhibit C1 activation. This protein has also been identified as the p32 subunit of pre-mRNA splicing factor SF2, as well as a hyaluronic acid-binding protein. [provided by RefSeq, Jul 2008],

Function : caution:Was originally (PubMed:1830244 and PubMed:8262387) thought to be a pre-mRNA splicing factor SF2 p32 subunit and to play a role in preventing exon skipping, ensuring the accuracy of splicing and regulating alternative splicing.,function:Not known. Binds to the globular "heads" of C1Q thus inhibiting C1 activation.,similarity:Belongs to the MAM33 family.,subunit:Interacts with Rubella virus capsid protein.,

Subcellular Location : Mitochondrion matrix . Nucleus . Nucleus, nucleolus . Cell membrane ; Peripheral membrane protein ; Extracellular side. Secreted. Cytoplasm . Seems to be predominantly localized to mitochondria. Secreted by activated lymphocytes. Localizes to the nucleolus when coexpressed with POLGARF (PubMed:32958672). Interaction with POLGARF is likely to result in prevention of C1QBP maturation and redirection from mitochondria to nucleoli (PubMed:32958672). .

Expression : Expressed on cell surface of peripheral blood cells (at protein level); Surface expression is reported for macrophages and monocyte-derived dendritic cells.

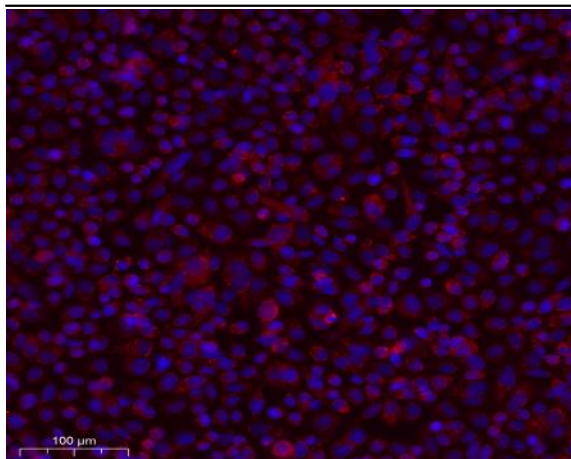
Sort : 2936

No4 : 1

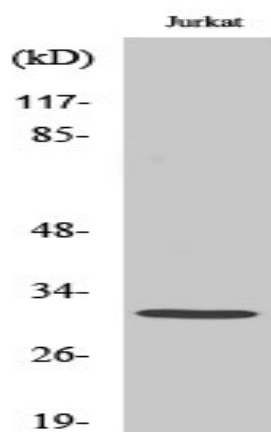
Host : Rabbit

Modifications : Unmodified

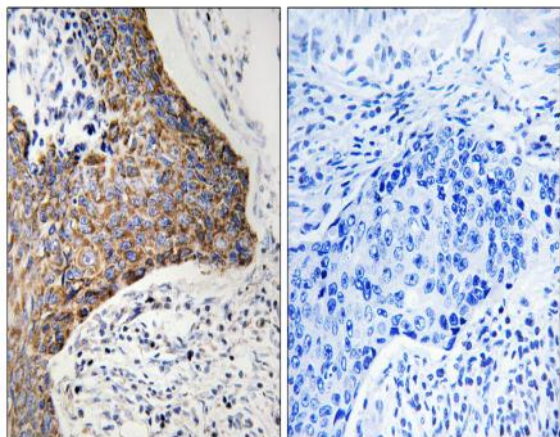
Products Images



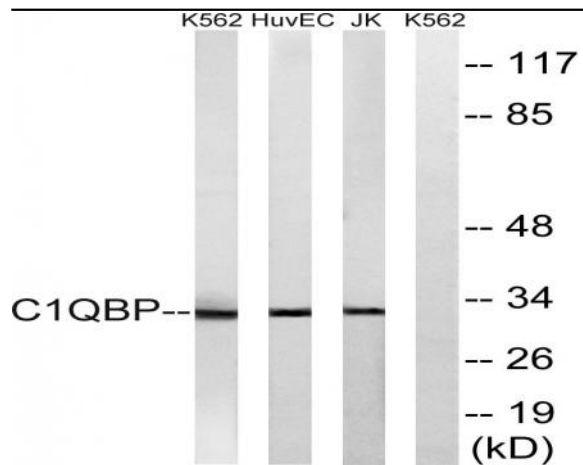
Immunofluorescence analysis of SiHa cell. 1, primary Antibody was diluted at 1:100(4°C overnight). 2, Goat Anti Rabbit IgG (H&L) - AFfluor 594 Secondary antibody(catalog No: RS3611) was diluted at 1:500(room temperature, 50min).



Western Blot analysis of various cells using C1QBP Polyclonal Antibody diluted at 1:1000



Immunohistochemistry analysis of paraffin-embedded human tonsil tissue, using C1QBP Antibody. The picture on the right is blocked with the synthesized peptide.



Western blot analysis of lysates from Jurkat, HUVEC, and K562 cells, using C1QBP Antibody. The lane on the right is blocked with the synthesized peptide.