

C/EBP δ/ϵ Polyclonal Antibody

Catalog No :	YT0556
Reactivity :	Human;Mouse;Rat
Applications :	WB;IHC;IF;ELISA
Target :	C/EBP δ/ϵ
Gene Name :	CEBPD/CEBPE
Protein Name :	CCAAT/enhancer-binding protein delta/epsilon
Human Gene Id :	1052/1053
Human Swiss Prot No :	P49716/Q15744
Mouse Gene Id :	12609/110794
Rat Gene Id :	25695/25410
Rat Swiss Prot No :	Q03484/P56261
Immunogen :	The antiserum was produced against synthesized peptide derived from human CEBPD/E. AA range:171-220
Specificity :	C/EBP δ/ϵ Polyclonal Antibody detects endogenous levels of C/EBP δ/ϵ protein.
Formulation :	Liquid in PBS containing 50% glycerol, 0.5% BSA and 0.02% sodium azide.
Source :	Polyclonal, Rabbit,IgG
Dilution :	WB 1:500 - 1:2000. IHC 1:100 - 1:300. IF 1:200 - 1:1000. ELISA: 1:20000. Not yet tested in other applications.
Purification :	The antibody was affinity-purified from rabbit antiserum by affinity-chromatography using epitope-specific immunogen.
Concentration :	1 mg/ml

Storage Stability : -15°C to -25°C/1 year(Do not lower than -25°C)

Observed Band : 28kD

Background :

The protein encoded by this intronless gene is a bZIP transcription factor which can bind as a homodimer to certain DNA regulatory regions. It can also form heterodimers with the related protein CEBP-alpha. The encoded protein is important in the regulation of genes involved in immune and inflammatory responses, and may be involved in the regulation of genes associated with activation and/or differentiation of macrophages. The cytogenetic location of this locus has been reported as both 8p11 and 8q11. [provided by RefSeq, Sep 2010],

Function :

function:C/EBP is a DNA-binding protein that recognizes two different motifs: the CCAAT homology common to many promoters and the enhanced core homology common to many enhancers. Important transcriptional activator in the regulation of genes involved in immune and inflammatory responses, may play an important role in the regulation of the several genes associated with activation and/or differentiation of macrophages.,similarity:Belongs to the bZIP family. C/EBP subfamily.,similarity:Contains 1 bZIP domain.,subunit:Binds DNA as a dimer and can form stable heterodimers with C/EBP alpha. Interacts with SPI1/PU.1.,

Subcellular Location : Nucleus .

Expression : Cerebellum,Placenta,

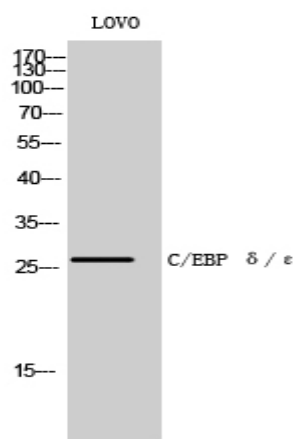
Sort : 2920

No4 : 1

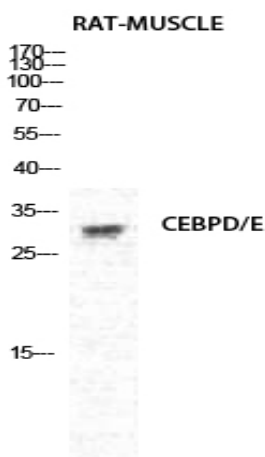
Host : Rabbit

Modifications : Unmodified

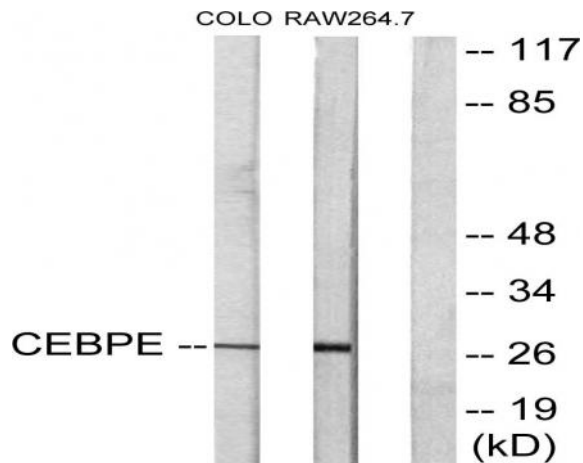
Products Images



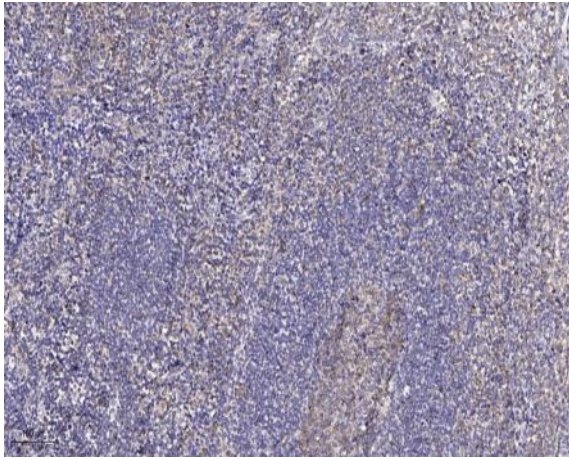
Western Blot analysis of LOVO cells using C/EBP δ/ϵ Polyclonal Antibody diluted at 1:500 cells nucleus extracted by Minute TM Cytoplasmic and Nuclear Fractionation kit (SC-003, Inventbiotech, MN, USA).



Western Blot analysis of RAT-MUSCLE cells using C/EBP δ/ϵ Polyclonal Antibody diluted at 1:500 cells nucleus extracted by Minute TM Cytoplasmic and Nuclear Fractionation kit (SC-003, Inventbiotech, MN, USA).



Western blot analysis of lysates from LOVO and RAW264.7 cells, using CEBPD/E Antibody. The lane on the right is blocked with the synthesized peptide.



Immunohistochemical analysis of paraffin-embedded human tonsil. 1, Antibody was diluted at 1:200(4° overnight). 2, Tris-EDTA,pH9.0 was used for antigen retrieval. 3,Secondary antibody was diluted at 1:200(room temperature, 45min).