

Bub3 Polyclonal Antibody

Catalog No :	YT0548
Reactivity :	Human;Mouse;Rat
Applications :	WB;IHC;IF;ELISA
Target :	Bub3
Fields :	>>Cell cycle;>>Human T-cell leukemia virus 1 infection
Gene Name :	BUB3
Protein Name :	Mitotic checkpoint protein BUB3
Human Gene Id :	9184
Human Swiss Prot No :	O43684
Mouse Gene Id :	12237
Mouse Swiss Prot No :	Q9WVA3
Immunogen :	The antiserum was produced against synthesized peptide derived from human BUB3. AA range:279-328
Specificity :	Bub3 Polyclonal Antibody detects endogenous levels of Bub3 protein.
Formulation :	Liquid in PBS containing 50% glycerol, 0.5% BSA and 0.02% sodium azide.
Source :	Polyclonal, Rabbit,IgG
Dilution :	WB 1:500 - 1:2000. IHC 1:100 - 1:300. IF 1:200 - 1:1000. ELISA: 1:5000. Not yet tested in other applications.
Purification :	The antibody was affinity-purified from rabbit antiserum by affinity-chromatography using epitope-specific immunogen.
Concentration :	1 mg/ml

Storage Stability : -15°C to -25°C/1 year(Do not lower than -25°C)

Observed Band : 40kD

Cell Pathway : Cell_Cycle_G1S;Cell_Cycle_G2M_DNA;

Background : This gene encodes a protein involved in spindle checkpoint function. The encoded protein contains four WD repeat domains and has sequence similarity with the yeast BUB3 protein. Alternate transcriptional splice variants, encoding different isoforms, have been characterized. [provided by RefSeq, Jul 2008],

Function : function:Required for kinetochore localization of BUB1.,similarity:Belongs to the WD repeat BUB3 family.,similarity:Contains 5 WD repeats.,subunit:Interacts with BUB1 and BUBR1.,

Subcellular Location : Nucleus. Chromosome, centromere, kinetochore . Starts to localize at kinetochores in prometaphase I (Pro-MI) stage and maintains the localization until the metaphase I-anaphase I (MI-AI) transition. .

Expression : Brain,Epithelium,Placenta,Spleen,Testis,

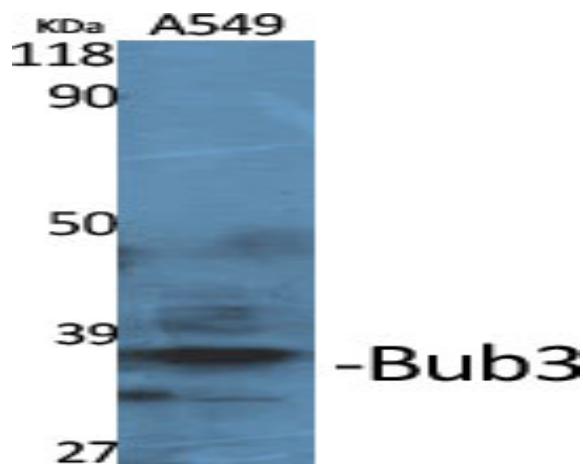
Sort : 2903

No4 : 1

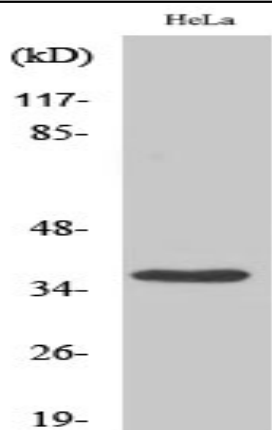
Host : Rabbit

Modifications : Unmodified

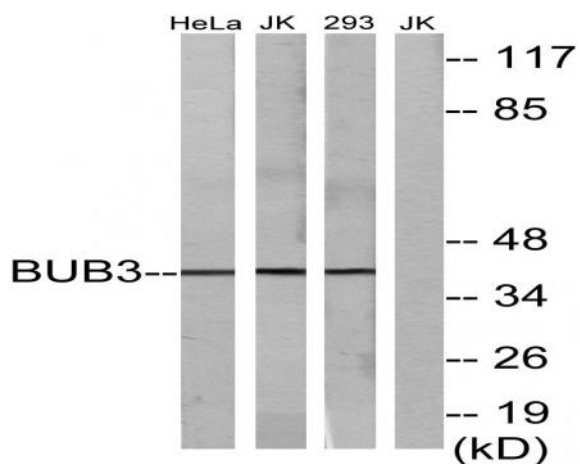
Products Images



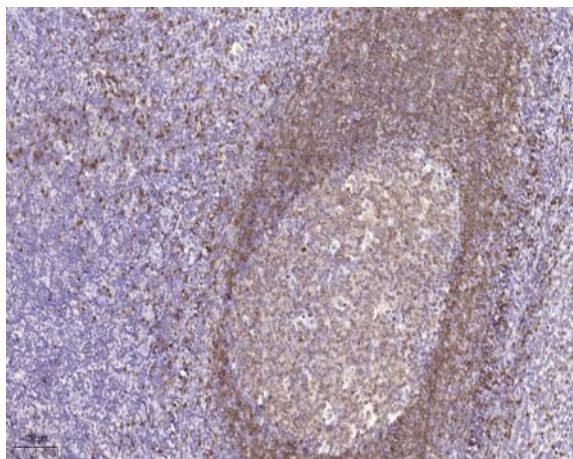
Western Blot analysis of various cells using Bub3 Polyclonal Antibody



Western Blot analysis of 293 cells using Bub3 Polyclonal Antibody



Western blot analysis of lysates from HeLa cells, Jurkat cells, and 293 cells, using BUB3 Antibody. The lane on the right is blocked with the synthesized peptide.



Immunohistochemical analysis of paraffin-embedded human tonsil. 1, Tris-EDTA, pH 9.0 was used for antigen retrieval. 2 Antibody was diluted at 1:200 (4° overnight). 3, Secondary antibody was diluted at 1:200 (room temperature, 45min).