

CEACAM21 Polyclonal Antibody

Catalog No :	YT0849
Reactivity :	Human
Applications :	WB;ELISA
Target :	CEACAM21
Gene Name :	CEACAM21
Protein Name :	Carcinoembryonic antigen-related cell adhesion molecule 21
Human Gene Id :	90273
Human Swiss Prot No :	Q3KPI0
Immunogen :	The antiserum was produced against synthesized peptide derived from human CEACAM21. AA range:171-220
Specificity :	CEACAM21 Polyclonal Antibody detects endogenous levels of CEACAM21 protein.
Formulation :	Liquid in PBS containing 50% glycerol, 0.5% BSA and 0.02% sodium azide.
Source :	Polyclonal, Rabbit,IgG
Dilution :	WB 1:500 - 1:2000. ELISA: 1:10000. Not yet tested in other applications.
Purification :	The antibody was affinity-purified from rabbit antiserum by affinity-chromatography using epitope-specific immunogen.
Concentration :	1 mg/ml
Storage Stability :	-15°C to -25°C/1 year(Do not lower than -25°C)
Observed Band :	32kD
Background :	similarity:Belongs to the immunoglobulin superfamily. CEA

family.,similarity:Contains 1 Ig-like C2-type (immunoglobulin-like) domain.,

Function :

similarity:Belongs to the immunoglobulin superfamily. CEA
family.,similarity:Contains 1 Ig-like C2-type (immunoglobulin-like) domain.,

Subcellular Location :

Membrane ; Single-pass type I membrane protein .

Expression :

Testis,

Sort :

3831

No4 :

1

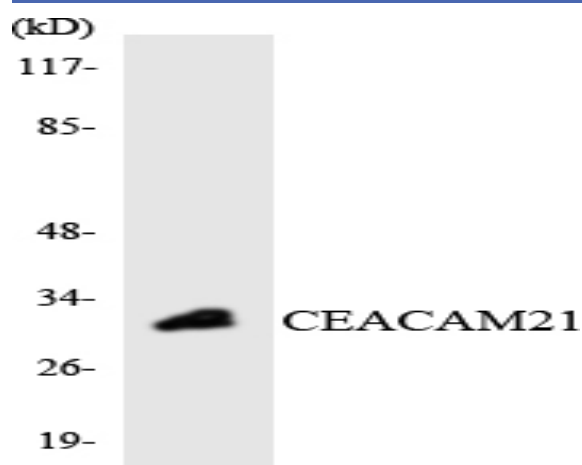
Host :

Rabbit

Modifications :

Unmodified

Products Images



Western blot analysis of the lysates from HT-29 cells using CEACAM21 antibody.