

## Cdx2 Polyclonal Antibody

|                              |   |
|------------------------------|---|
| <b>Catalog No :</b>          | YT0846  |
| <b>Reactivity :</b>          | Human;Mouse;Rat   |
| <b>Applications :</b>        | WB;ELISA  |
| <b>Target :</b>              | CDX2  |
| <b>Fields :</b>              | >>Gastric cancer  |
| <b>Gene Name :</b>           | CDX2  |
| <b>Protein Name :</b>        | Homeobox protein CDX-2  |
| <b>Human Gene Id :</b>       | 1045  |
| <b>Human Swiss Prot No :</b> | Q99626  |
| <b>Mouse Gene Id :</b>       | 12591   |
| <b>Mouse Swiss Prot No :</b> | P43241  |
| <b>Immunogen :</b>           | The antiserum was produced against synthesized peptide derived from human CDX2. AA range:249-298                      |
| <b>Specificity :</b>         | Cdx2 Polyclonal Antibody detects endogenous levels of Cdx2 protein.   |
| <b>Formulation :</b>         | Liquid in PBS containing 50% glycerol, 0.5% BSA and 0.02% sodium azide.   |
| <b>Source :</b>              | Polyclonal, Rabbit,IgG  |
| <b>Dilution :</b>            | WB 1:500 - 1:2000. ELISA: 1:5000. Not yet tested in other applications.   |
| <b>Purification :</b>        | The antibody was affinity-purified from rabbit antiserum by affinity-chromatography using epitope-specific immunogen. |
| <b>Concentration :</b>       | 1 mg/ml   |

**Storage Stability :** -15°C to -25°C/1 year(Do not lower than -25°C)

**Observed Band :** 45kD

**Background :** This gene is a member of the caudal-related homeobox transcription factor gene family. The encoded protein is a major regulator of intestine-specific genes involved in cell growth and differentiation. This protein also plays a role in early embryonic development of the intestinal tract. Aberrant expression of this gene is associated with intestinal inflammation and tumorigenesis. [provided by RefSeq, Jan 2012],

**Function :** function:Involved in the transcriptional regulation of multiple genes expressed in the intestinal epithelium. Important in broad range of functions from early differentiation to maintenance of the intestinal epithelial lining of both the small and large intestine.,PTM:Phosphorylation of Ser-60 mediates the transactivation capacity.,similarity:Belongs to the Caudal homeobox family.,similarity:Contains 1 homeobox DNA-binding domain.,

**Subcellular Location :** Nucleus .

**Expression :** Detected in small intestine, colon and pancreas.

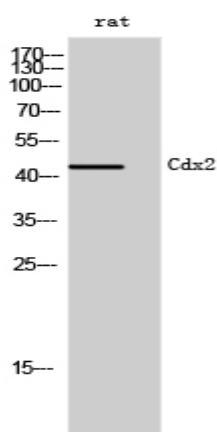
**Sort :** 3824

**No4 :** 1

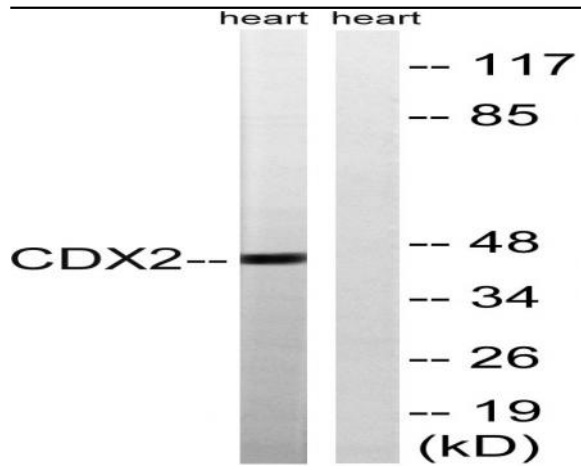
**Host :** Rabbit

**Modifications :** Unmodified

## Products Images



Western Blot analysis of rat cells using Cdx2 Polyclonal Antibody cells nucleus extracted by Minute TM Cytoplasmic and Nuclear Fractionation kit (SC-003, Invent biotech, MN, USA).



Western blot analysis of lysates from rat heart, using CDX2 Antibody. The lane on the right is blocked with the synthesized peptide.