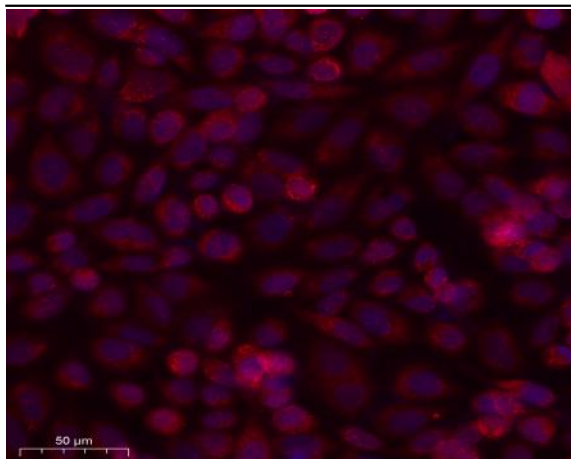


BMP-8B Polyclonal Antibody

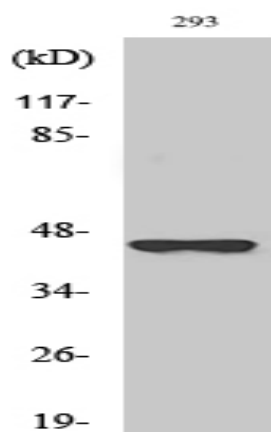
Catalog No :	YT0506
Reactivity :	Human;Mouse
Applications :	WB;ELISA
Target :	BMP-8B
Fields :	>>Cytokine-cytokine receptor interaction;>>TGF-beta signaling pathway;>>Hippo signaling pathway;>>Thermogenesis
Gene Name :	BMP8B
Protein Name :	Bone morphogenetic protein 8B
Human Gene Id :	656
Human Swiss Prot No :	P34820
Mouse Swiss Prot No :	P55105
Immunogen :	The antiserum was produced against synthesized peptide derived from human BMP8B. AA range:261-310
Specificity :	BMP-8B Polyclonal Antibody detects endogenous levels of BMP-8B protein.
Formulation :	Liquid in PBS containing 50% glycerol, 0.5% BSA and 0.02% sodium azide.
Source :	Polyclonal, Rabbit,IgG
Dilution :	WB 1:500 - 1:2000. ELISA: 1:40000. Not yet tested in other applications.
Purification :	The antibody was affinity-purified from rabbit antiserum by affinity-chromatography using epitope-specific immunogen.
Concentration :	1 mg/ml
Storage Stability :	-15°C to -25°C/1 year(Do not lower than -25°C)

Observed Band :	45kD
Cell Pathway :	Hedgehog;TGF-beta;
Background :	<p>This gene encodes a secreted ligand of the TGF-beta (transforming growth factor-beta) superfamily of proteins. Ligands of this family bind various TGF-beta receptors leading to recruitment and activation of SMAD family transcription factors that regulate gene expression. The encoded preproprotein is proteolytically processed to generate each subunit of the disulfide-linked homodimer. The encoded protein stimulates thermogenesis in brown adipose tissue. Expression of this gene may be downregulated in pancreatic cancer. This gene may have arose from a gene duplication event and its gene duplicate is also present on chromosome 1. [provided by RefSeq, Jul 2016],</p>
Function :	<p>function:Induces cartilage and bone formation. May be the osteoinductive factor responsible for the phenomenon of epithelial osteogenesis. Plays a role in calcium regulation and bone homeostasis.,online information:Bone morphogenetic protein 8b entry,similarity:Belongs to the TGF-beta family.,subunit:Homodimer; disulfide-linked.,</p>
Subcellular Location :	Secreted .
Expression :	Hippocampus,Testis,
Sort :	2808
No4 :	1
Host :	Rabbit
Modifications :	Unmodified

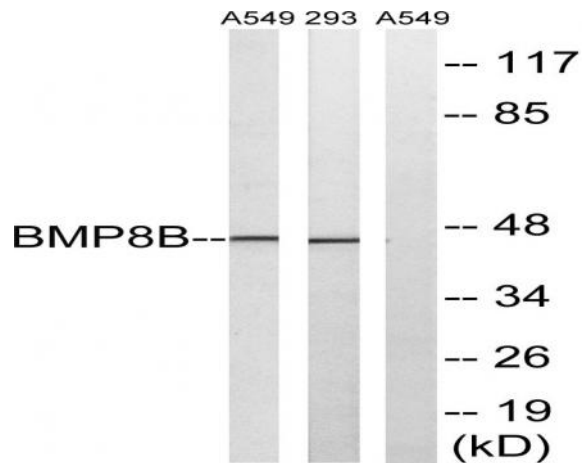
Products Images



Immunofluorescence analysis of SiHa cell. 1, primary Antibody was diluted at 1:100(4°C overnight). 2, Goat Anti Rabbit IgG (H&L) - AFfluor 594 Secondary antibody(catalog No: RS3611) was diluted at 1:500(room temperature, 50min).



Western Blot analysis of various cells using BMP-8B Polyclonal Antibody diluted at 1:2000



Western blot analysis of lysates from 293 and A549 cells, using BMP8B Antibody. The lane on the right is blocked with the synthesized peptide.