

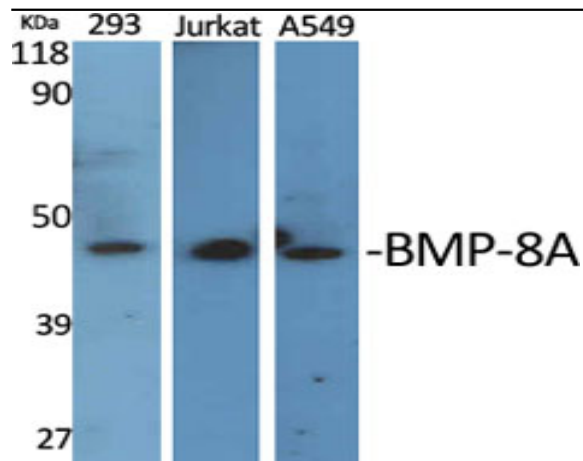
## BMP-8A Polyclonal Antibody

<b>Catalog No :</b>	YT0505
<b>Reactivity :</b>	Human;Mouse
<b>Applications :</b>	WB;IHC;IF;ELISA
<b>Target :</b>	BMP-8A
<b>Fields :</b>	>>Cytokine-cytokine receptor interaction;>>TGF-beta signaling pathway;>>Hippo signaling pathway;>>Thermogenesis
<b>Gene Name :</b>	BMP8A
<b>Protein Name :</b>	Bone morphogenetic protein 8A
<b>Human Gene Id :</b>	353500
<b>Human Swiss Prot No :</b>	Q7Z5Y6
<b>Mouse Swiss Prot No :</b>	P34821
<b>Immunogen :</b>	The antiserum was produced against synthesized peptide derived from human BMP8A. AA range:253-302
<b>Specificity :</b>	BMP-8A Polyclonal Antibody detects endogenous levels of BMP-8A protein.
<b>Formulation :</b>	Liquid in PBS containing 50% glycerol, 0.5% BSA and 0.02% sodium azide.
<b>Source :</b>	Polyclonal, Rabbit,IgG
<b>Dilution :</b>	WB 1:500 - 1:2000. IHC 1:100 - 1:300. IF 1:200 - 1:1000. ELISA: 1:20000. Not yet tested in other applications.
<b>Purification :</b>	The antibody was affinity-purified from rabbit antiserum by affinity-chromatography using epitope-specific immunogen.
<b>Concentration :</b>	1 mg/ml

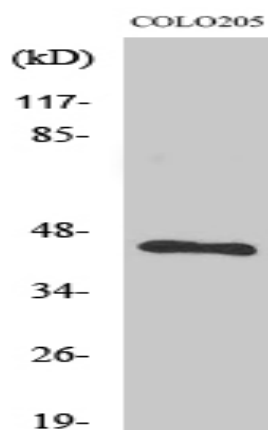
---

<b>Storage Stability :</b>	<u>-15°C to -25°C/1 year(Do not lower than -25°C)</u>
<b>Observed Band :</b>	<u>45-55kD</u>
<b>Cell Pathway :</b>	<u>Hedgehog;TGF-beta;</u>
<b>Background :</b>	<u>This gene encodes a secreted ligand of the TGF-beta (transforming growth factor-beta) superfamily of proteins. Ligands of this family bind various TGF-beta receptors leading to recruitment and activation of SMAD family transcription factors that regulate gene expression. The encoded preproprotein is proteolytically processed to generate each subunit of the disulfide-linked homodimer. This protein may play a role in development of the reproductive system. This gene may have arose from a gene duplication event and its gene duplicate is also present on chromosome 1. [provided by RefSeq, Jul 2016],</u>
<b>Function :</b>	<u>function:Induces cartilage and bone formation. May be the osteoinductive factor responsible for the phenomenon of epithelial osteogenesis. Plays a role in calcium regulation and bone homeostasis.,online information:Bone morphogenetic protein 8A entry,similarity:Belongs to the TGF-beta family.,subunit:Homodimer; disulfide-linked.,</u>
<b>Subcellular Location :</b>	<u>Secreted .</u>
<b>Expression :</b>	<u>Brain,Hippocampus,Thyroid gland,</u>
<b>Sort :</b>	<u>2806</u>
<b>No4 :</b>	<u>1</u>
<b>Host :</b>	<u>Rabbit</u>
<b>Modifications :</b>	<u>Unmodified</u>

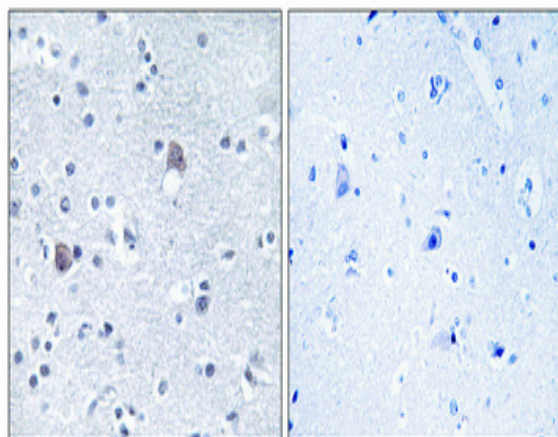
## Products Images



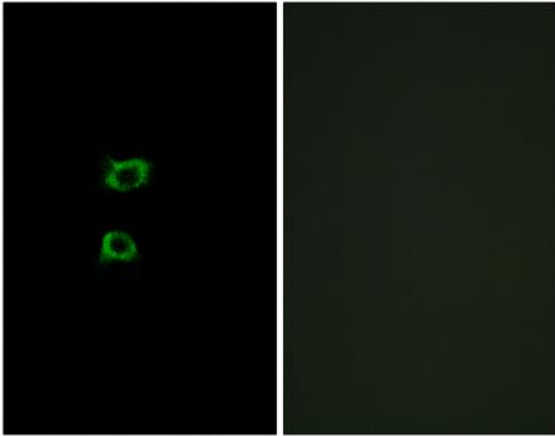
Western Blot analysis of various cells using BMP-8A Polyclonal Antibody



Western Blot analysis of COLO205 cells using BMP-8A Polyclonal Antibody



Immunohistochemical analysis of paraffin-embedded Human brain. Antibody was diluted at 1:100(4° overnight). High-pressure and temperature Tris-EDTA,pH8.0 was used for antigen retrieval. Negative contrl (right) obtained from antibody was pre-absorbed by immunogen peptide.



Immunofluorescence analysis of A549 cells, using BMP8A Antibody. The picture on the right is blocked with the synthesized peptide.