

## BMP-8 Polyclonal Antibody

<b>Catalog No :</b>	YT0504
<b>Reactivity :</b>	Human;Mouse
<b>Applications :</b>	IHC;IF;ELISA
<b>Target :</b>	BMP-8
<b>Fields :</b>	>>Cytokine-cytokine receptor interaction;>>TGF-beta signaling pathway;>>Hippo signaling pathway;>>Thermogenesis
<b>Gene Name :</b>	BMP8A/BMP8B
<b>Protein Name :</b>	Bone morphogenetic protein 8A/B
<b>Human Gene Id :</b>	656
<b>Human Swiss Prot No :</b>	P34820/Q7Z5Y6
<b>Immunogen :</b>	The antiserum was produced against synthesized peptide derived from human BMP-8. AA range:41-90
<b>Specificity :</b>	BMP-8 Polyclonal Antibody detects endogenous levels of BMP-8 protein.
<b>Formulation :</b>	Liquid in PBS containing 50% glycerol, 0.5% BSA and 0.02% sodium azide.
<b>Source :</b>	Polyclonal, Rabbit,IgG
<b>Dilution :</b>	IHC 1:100 - 1:300. ELISA: 1:40000.. IF 1:50-200
<b>Purification :</b>	The antibody was affinity-purified from rabbit antiserum by affinity-chromatography using epitope-specific immunogen.
<b>Concentration :</b>	1 mg/ml
<b>Storage Stability :</b>	-15°C to -25°C/1 year(Do not lower than -25°C)
<b>Molecularweight :</b>	45kD

**Cell Pathway :** Hedgehog;TGF-beta;

**Background :** This gene encodes a secreted ligand of the TGF-beta (transforming growth factor-beta) superfamily of proteins. Ligands of this family bind various TGF-beta receptors leading to recruitment and activation of SMAD family transcription factors that regulate gene expression. The encoded preproprotein is proteolytically processed to generate each subunit of the disulfide-linked homodimer. The encoded protein stimulates thermogenesis in brown adipose tissue. Expression of this gene may be downregulated in pancreatic cancer. This gene may have arose from a gene duplication event and its gene duplicate is also present on chromosome 1. [provided by RefSeq, Jul 2016],

**Function :** function:Induces cartilage and bone formation. May be the osteoinductive factor responsible for the phenomenon of epithelial osteogenesis. Plays a role in calcium regulation and bone homeostasis.,online information:Bone morphogenetic protein 8b entry,similarity:Belongs to the TGF-beta family.,subunit:Homodimer; disulfide-linked.,

**Subcellular Location :** Secreted .

**Expression :** Hippocampus,Testis,

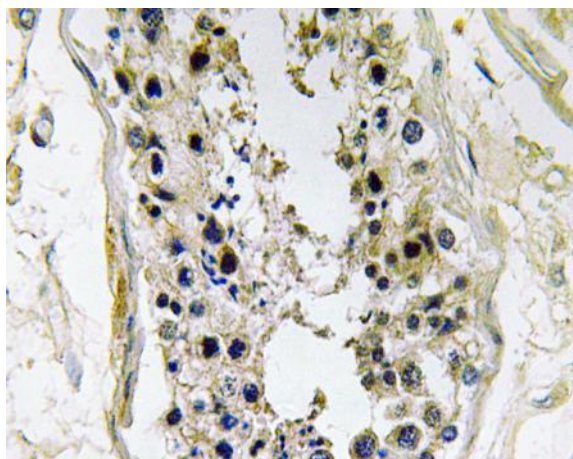
**Sort :** 2805

**No4 :** 1

**Host :** Rabbit

**Modifications :** Unmodified

## Products Images



Immunohistochemistry analysis of BMP-8 antibody in paraffin-embedded human testis tissue.