

**BMP-3A Polyclonal Antibody**

<b>Catalog No :</b>	YT0500
<b>Reactivity :</b>	Human;Rat;Mouse;
<b>Applications :</b>	WB;ELISA
<b>Target :</b>	BMP-3A
<b>Fields :</b>	>>Cytokine-cytokine receptor interaction
<b>Gene Name :</b>	BMP3
<b>Protein Name :</b>	Bone morphogenetic protein 3
<b>Human Gene Id :</b>	651
<b>Human Swiss Prot No :</b>	P12645
<b>Mouse Swiss Prot No :</b>	Q8BHE5
<b>Immunogen :</b>	The antiserum was produced against synthesized peptide derived from human BMP3. AA range:281-330
<b>Specificity :</b>	BMP-3A Polyclonal Antibody detects endogenous levels of BMP-3A protein.
<b>Formulation :</b>	Liquid in PBS containing 50% glycerol, 0.5% BSA and 0.02% sodium azide.
<b>Source :</b>	Polyclonal, Rabbit,IgG
<b>Dilution :</b>	WB 1:500 - 1:2000. ELISA: 1:5000. Not yet tested in other applications.
<b>Purification :</b>	The antibody was affinity-purified from rabbit antiserum by affinity-chromatography using epitope-specific immunogen.
<b>Concentration :</b>	1 mg/ml
<b>Storage Stability :</b>	-15°C to -25°C/1 year(Do not lower than -25°C)

**Observed Band :** 55kD

**Background :** This gene encodes a secreted ligand of the TGF-beta (transforming growth factor-beta) superfamily of proteins. Ligands of this family bind various TGF-beta receptors leading to recruitment and activation of SMAD family transcription factors that regulate gene expression. The encoded preproprotein is proteolytically processed to generate each subunit of the disulfide-linked homodimer. This protein suppresses osteoblast differentiation, and negatively regulates bone density, by modulating TGF-beta receptor availability to other ligands. [provided by RefSeq, Jul 2016],

**Function :** function:Negatively regulates bone density. Antagonizes the ability of certain osteogenic BMPs to induce osteoprogenitor differentiation and ossification.,induction:Highly expressed in fracture tissue, particularly in osteoblasts, osteoclasts and chondroblasts.,online information:Bone morphogenetic protein 3 entry,similarity:Belongs to the TGF-beta family.,subunit:Homodimer; disulfide-linked.,tissue specificity:Expressed in adult and fetal cartilage.,

**Subcellular Location :** Secreted.

**Expression :** Expressed in adult and fetal cartilage.

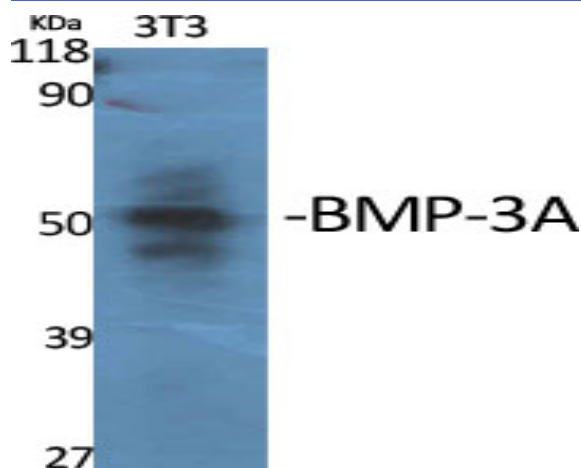
**Sort :** 2796

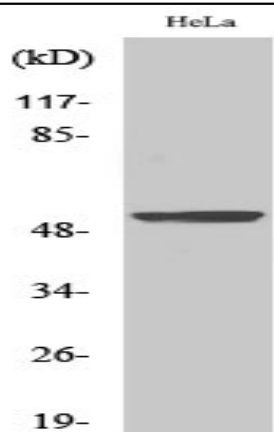
**No4 :** 1

**Host :** Rabbit

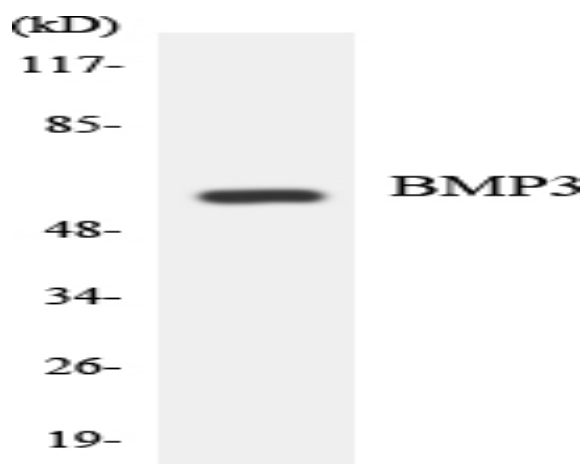
**Modifications :** Unmodified

## Products Images





Western Blot analysis of HepG2 cells using BMP-3A Polyclonal Antibody



Western blot analysis of the lysates from HeLa cells using BMP3 antibody.