

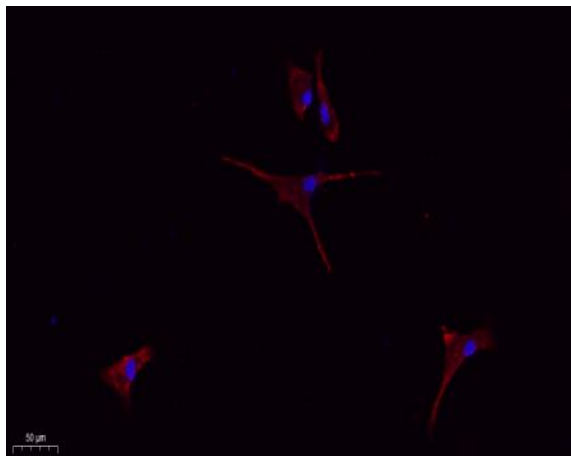
**CD9 Polyclonal Antibody**

|                              |  |
|------------------------------|--|
| <b>Catalog No :</b>          | YT0782   |
| <b>Reactivity :</b>          | Human;Mouse;Rat  |
| <b>Applications :</b>        | WB;IHC;IF;ELISA  |
| <b>Target :</b>              | CD9  |
| <b>Fields :</b>              | >>Hematopoietic cell lineage   |
| <b>Gene Name :</b>           | CD9  |
| <b>Protein Name :</b>        | CD9 antigen  |
| <b>Human Gene Id :</b>       | 928  |
| <b>Human Swiss Prot No :</b> | P21926   |
| <b>Mouse Gene Id :</b>       | 12527  |
| <b>Mouse Swiss Prot No :</b> | P40240   |
| <b>Rat Gene Id :</b>         | 24936  |
| <b>Rat Swiss Prot No :</b>   | P40241   |
| <b>Immunogen :</b>           | The antiserum was produced against synthesized peptide derived from human CD9. AA range:101-150      |
| <b>Specificity :</b>         | CD9 Polyclonal Antibody detects endogenous levels of CD9 protein.                                    |
| <b>Formulation :</b>         | Liquid in PBS containing 50% glycerol, 0.5% BSA and 0.02% sodium azide.                              |
| <b>Source :</b>              | Polyclonal, Rabbit,IgG   |
| <b>Dilution :</b>            | WB 1:500 - 1:2000. IHC: 1:100-300 ELISA: 1:20000. IF 1:100-300 Not yet tested in other applications. |

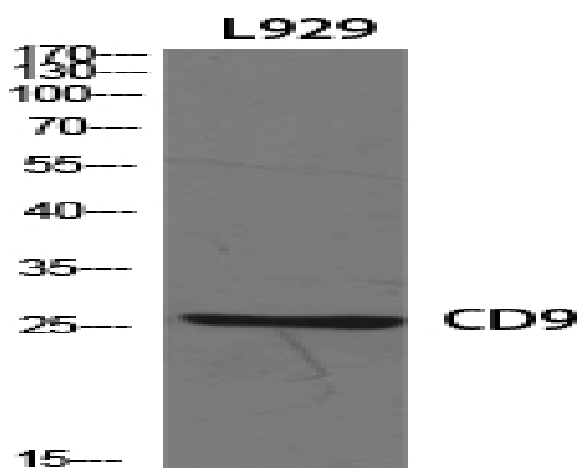
|                               |   |
|-------------------------------|---|
| <b>Purification :</b>         | The antibody was affinity-purified from rabbit antiserum by affinity-chromatography using epitope-specific immunogen.   |
| <b>Concentration :</b>        | 1 mg/ml   |
| <b>Storage Stability :</b>    | -15°C to -25°C/1 year(Do not lower than -25°C)  |
| <b>Observed Band :</b>        | 25kD  |
| <b>Cell Pathway :</b>         | Hematopoietic cell lineage;   |
| <b>Background :</b>           | This gene encodes a member of the transmembrane 4 superfamily, also known as the tetraspanin family. Tetraspanins are cell surface glycoproteins with four transmembrane domains that form multimeric complexes with other cell surface proteins. The encoded protein functions in many cellular processes including differentiation, adhesion, and signal transduction, and expression of this gene plays a critical role in the suppression of cancer cell motility and metastasis. [provided by RefSeq, Jan 2011],   |
| <b>Function :</b>             | function:Involved in platelet activation and aggregation. Regulates paranodal junction formation. Involved in cell adhesion, cell motility and tumor metastasis. Required for sperm-egg fusion.,PTM:Protein exists in three forms with molecular masses between 22 and 27 kDa, and is known to carry covalently linked fatty acids.,similarity:Belongs to the tetraspanin (TM4SF) family.,subunit:Forms both disulfide-linked homodimers and higher homooligomers as well as heterooligomers with other members of the tetraspanin family. Associates with CR2/CD21 and with PTGFRN/CD9P1. Interacts directly with IGSF8.,tissue specificity:Expressed by a variety of hematopoietic and epithelial cells., |
| <b>Subcellular Location :</b> | Cell membrane ; Multi-pass membrane protein . Membrane ; Multi-pass membrane protein . Secreted, extracellular exosome . Present at the cell surface of oocytes. Accumulates in the adhesion area between the sperm and egg following interaction between IZUMO1 and its receptor IZUMO1R/JUNO. .   |
| <b>Expression :</b>           | Detected in platelets (at protein level) (PubMed:19640571). Expressed by a variety of hematopoietic and epithelial cells (PubMed:19640571).   |
| <b>Tag :</b>                  | orthogonal,hot  |
| <b>Sort :</b>                 | 1   |
| <b>No3 :</b>                  | ab236630  |
| <b>No4 :</b>                  | 1   |

**Host :** Rabbit**Modifications :** Unmodified

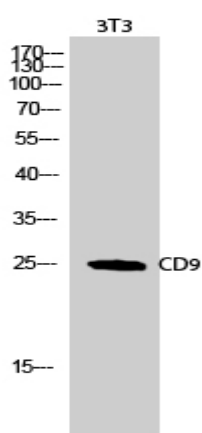
## Products Images



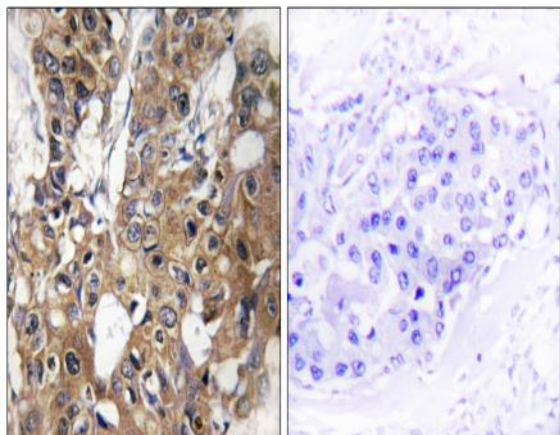
Immunofluorescence analysis of A549. 1,primary Antibody(red) was diluted at 1:200(4 °C overnight). 2, Goat Anti Rabbit IgG (H&L) - Alexa Fluor 594 Secondary antibody was diluted at 1:1000(room temperature, 50min).3, Picture B: DAPI(blue) 10min.



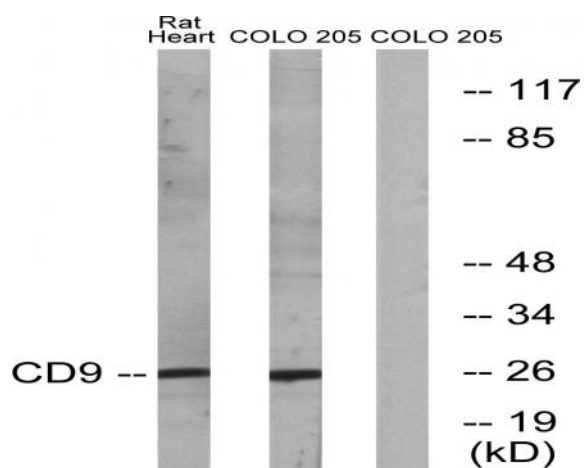
Western Blot analysis of various cells using CD9 Polyclonal Antibody diluted at 1:1000



Western Blot analysis of 3T3 cells using CD9 Polyclonal Antibody diluted at 1:1000



Immunohistochemistry analysis of paraffin-embedded human breast carcinoma tissue, using CD9 Antibody. The picture on the right is blocked with the synthesized peptide.



Western blot analysis of lysates from rat heart and COLO cells, using CD9 Antibody. The lane on the right is blocked with the synthesized peptide.