

BCAS4 Polyclonal Antibody

Catalog No :	YT0466
Reactivity :	Human
Applications :	WB;IHC;IF;ELISA
Target :	BCAS4
Gene Name :	BCAS4
Protein Name :	Breast carcinoma-amplified sequence 4
Human Gene Id :	55653
Human Swiss Prot No :	Q8TDM0
Immunogen :	The antiserum was produced against synthesized peptide derived from human BCAS4. AA range:31-80
Specificity :	BCAS4 Polyclonal Antibody detects endogenous levels of BCAS4 protein.
Formulation :	Liquid in PBS containing 50% glycerol, 0.5% BSA and 0.02% sodium azide.
Source :	Polyclonal, Rabbit,IgG
Dilution :	WB 1:500 - 1:2000. IHC 1:100 - 1:300. ELISA: 1:20000.. IF 1:50-200
Purification :	The antibody was affinity-purified from rabbit antiserum by affinity-chromatography using epitope-specific immunogen.
Concentration :	1 mg/ml
Storage Stability :	-15°C to -25°C/1 year(Do not lower than -25°C)
Observed Band :	23kD
Background :	disease:A chromosomal aberration involving BCAS4 may be a cause of breast cancer. Translocation t(17;20)(q23;q13) with BCAS3.,similarity:Belongs to the

cappuccino family.,tissue specificity:Brain, thymus, spleen, kidney and placenta.
Overexpressed in most breast cancer cell lines.,

Function :

disease:A chromosomal aberration involving BCAS4 may be a cause of breast cancer. Translocation t(17;20)(q23;q13) with BCAS3.,similarity:Belongs to the cappuccino family.,tissue specificity:Brain, thymus, spleen, kidney and placenta.
Overexpressed in most breast cancer cell lines.,

Subcellular Location :

Cytoplasm .

Expression :

Brain, thymus, spleen, kidney and placenta. Overexpressed in most breast cancer cell lines.

Sort :

2608

No4 :

1

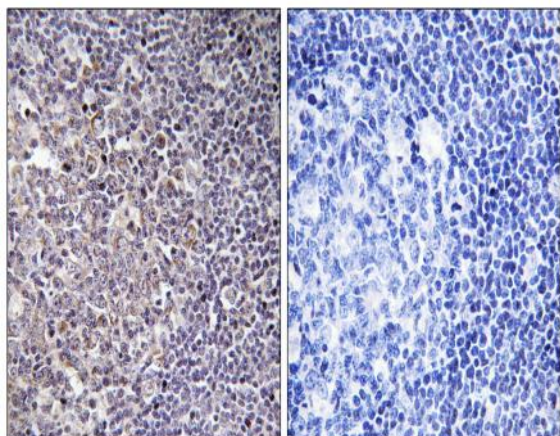
Host :

Rabbit

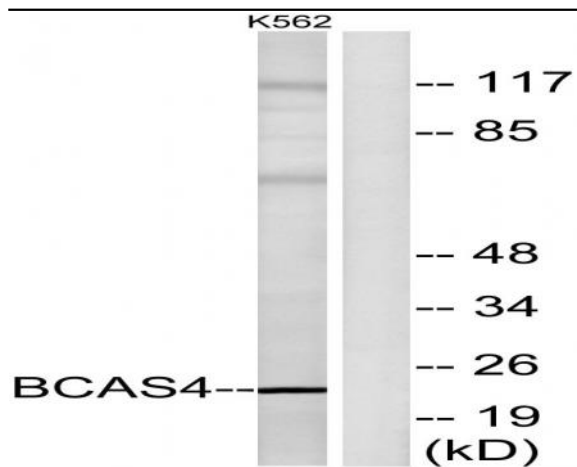
Modifications :

Unmodified

Products Images



Immunohistochemistry analysis of paraffin-embedded human tonsil tissue, using BCAS4 Antibody. The picture on the right is blocked with the synthesized peptide.



Western blot analysis of lysates from K562 cells, using BCAS4 Antibody. The lane on the right is blocked with the synthesized peptide.