

## CD40 Polyclonal Antibody

<b>Catalog No :</b>	YT0763
<b>Reactivity :</b>	Human;Mouse;Monkey
<b>Applications :</b>	WB;IHC;IF;ELISA
<b>Target :</b>	CD40
<b>Fields :</b>	>>Cytokine-cytokine receptor interaction;>>NF-kappa B signaling pathway;>>Cell adhesion molecules;>>Toll-like receptor signaling pathway;>>Intestinal immune network for IgA production;>>Malaria;>>Toxoplasmosis;>>Human T-cell leukemia virus 1 infection;>>Epstein-Barr virus infection;>>Transcriptional misregulation in cancer;>>Asthma;>>Autoimmune thyroid disease;>>Systemic lupus erythematosus;>>Allograft rejection;>>Primary immunodeficiency;>>Viral myocarditis;>>Lipid and atherosclerosis
<b>Gene Name :</b>	CD40
<b>Protein Name :</b>	Tumor necrosis factor receptor superfamily member 5
<b>Human Gene Id :</b>	958
<b>Human Swiss Prot No :</b>	P25942
<b>Mouse Gene Id :</b>	21939
<b>Mouse Swiss Prot No :</b>	P27512
<b>Immunogen :</b>	The antiserum was produced against synthesized peptide derived from human CD40. AA range:228-277
<b>Specificity :</b>	CD40 Polyclonal Antibody detects endogenous levels of CD40 protein.
<b>Formulation :</b>	Liquid in PBS containing 50% glycerol, 0.5% BSA and 0.02% sodium azide.
<b>Source :</b>	Polyclonal, Rabbit,IgG
	WB 1:500 - 1:2000. IHC 1:100 - 1:300. ELISA: 1:10000.. IF 1:50-200

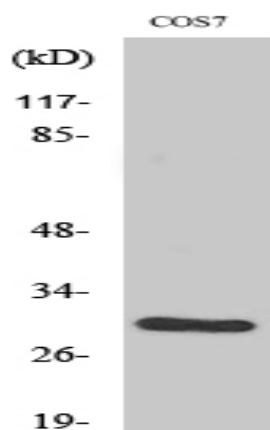
<b>Purification :</b>	The antibody was affinity-purified from rabbit antiserum by affinity-chromatography using epitope-specific immunogen.
<b>Concentration :</b>	1 mg/ml
<b>Storage Stability :</b>	-15°C to -25°C/1 year(Do not lower than -25°C)
<b>Observed Band :</b>	30kD
<b>Cell Pathway :</b>	Cytokine-cytokine receptor interaction;Cell adhesion molecules (CAMs);Toll_Like;Intestinal immune network for IgA production;Asthma;Autoimmune thyroid disease;Systemic lupus erythematosus;Allograft re
<b>Background :</b>	This gene is a member of the TNF-receptor superfamily. The encoded protein is a receptor on antigen-presenting cells of the immune system and is essential for mediating a broad variety of immune and inflammatory responses including T cell-dependent immunoglobulin class switching, memory B cell development, and germinal center formation. AT-hook transcription factor AKNA is reported to coordinately regulate the expression of this receptor and its ligand, which may be important for homotypic cell interactions. Adaptor protein TNFR2 interacts with this receptor and serves as a mediator of the signal transduction. The interaction of this receptor and its ligand is found to be necessary for amyloid-beta-induced microglial activation, and thus is thought to be an early event in Alzheimer disease pathogenesis. Mutations affecting this gene are the cause of autosomal recessive hyper-IgM immunodeficiency type 3 (HIG
<b>Function :</b>	alternative products:Additional isoforms seem to exist,disease:Defects in CD40 are the cause of hyper-IgM immunodeficiency type 3 (HIGM3) [MIM:606843]. HIGM3 is an autosomal recessive disorder which includes an inability of B cells to undergo isotype switching, one of the final differentiation steps in the humoral immune system, an inability to mount an antibody-specific immune response, and a lack of germinal center formation.,function:Receptor for TNFSF5/CD40LG.,online information:CD40 entry,online information:CD40 mutation db,similarity:Contains 4 TNFR-Cys repeats.,subunit:Monomer and homodimer. The variant form found in the bladder carcinoma cell line Hu549 does not form homodimers. Interacts with TRAF1, TRAF2, TRAF3, TRAF5 and TRAF6.,tissue specificity:B-cells and in primary carcinomas.,
<b>Subcellular Location :</b>	[Isoform I]: Cell membrane; Single-pass type I membrane protein.; [Isoform II]: Secreted.
<b>Expression :</b>	B-cells and in primary carcinomas.
<b>Tag :</b>	orthogonal,hot
	3579

---

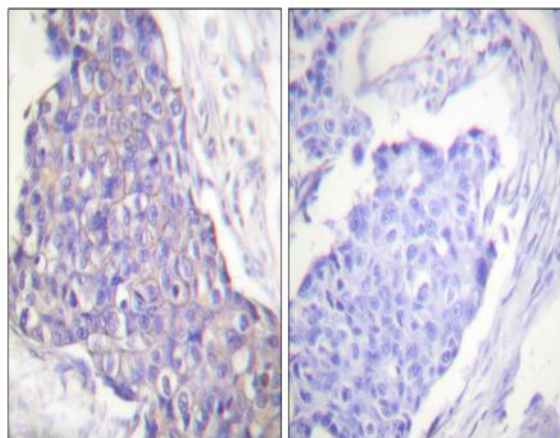
<b>Size :</b>	1
<b>Host :</b>	Rabbit
<b>Modifications :</b>	Unmodified

---

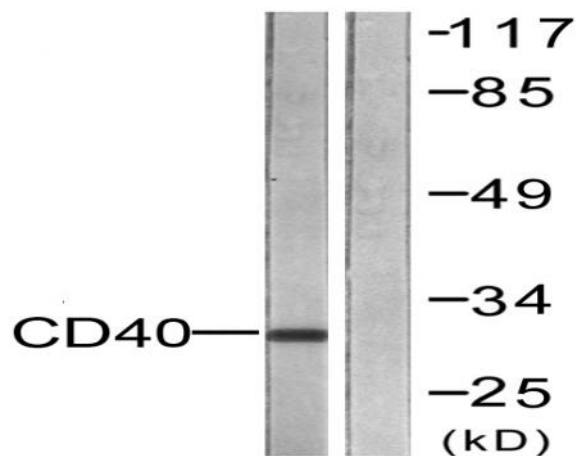
## Products Images



Western Blot analysis of various cells using CD40 Polyclonal Antibody



Immunohistochemistry analysis of paraffin-embedded human breast carcinoma tissue, using CD40 Antibody. The picture on the right is blocked with the synthesized peptide.



Western blot analysis of lysates from COS7 cells, using CD40 Antibody. The lane on the right is blocked with the synthesized peptide.