

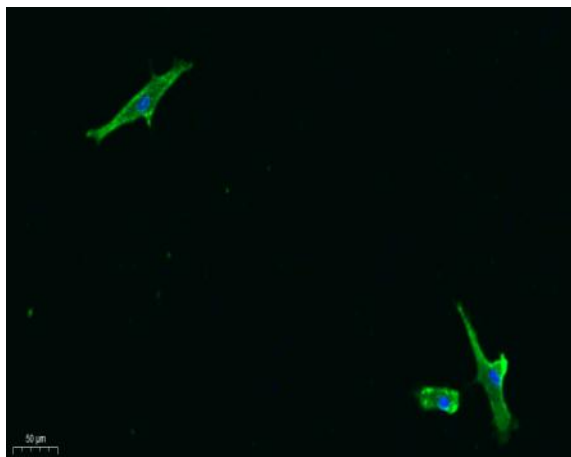
Bak Polyclonal Antibody

Catalog No :	YT0449
Reactivity :	Human;Mouse
Applications :	WB;IHC;IF;ELISA
Target :	Bak
Fields :	>>Platinum drug resistance;>>Protein processing in endoplasmic reticulum;>>Apoptosis;>>Apoptosis - multiple species;>>Pathways of neurodegeneration - multiple diseases;>>Pathogenic Escherichia coli infection;>>Salmonella infection;>>Hepatitis C;>>Measles;>>Human cytomegalovirus infection;>>Influenza A;>>Human papillomavirus infection;>>Kaposi sarcoma-associated herpesvirus infection;>>Herpes simplex virus 1 infection;>>Epstein-Barr virus infection;>>Human immunodeficiency virus 1 infection;>>Pathways in cancer;>>Transcriptional misregulation in cancer;>>Viral carcinogenesis;>>MicroRNAs in cancer;>>Colorectal cancer;>>Pancreatic cancer;>>Endometrial cancer;>>Glioma;>>Thyroid cancer;>>Basal cell carcinoma;>>Melanoma;>>Chronic myeloid leukemia;>>Small cell lung cancer;>>Non-small cell lung cancer;>>Breast cancer;>>Hepatocellular carcinoma;>>Gastric cancer
Gene Name :	BAK1
Protein Name :	Bcl-2 homologous antagonist/killer
Human Gene Id :	578
Human Swiss Prot No :	Q16611
Mouse Swiss Prot No :	O08734
Immunogen :	The antiserum was produced against synthesized peptide derived from human Bak. AA range:1-50
Specificity :	Bak Polyclonal Antibody detects endogenous levels of Bak protein.
Formulation :	Liquid in PBS containing 50% glycerol, 0.5% BSA and 0.02% sodium azide.

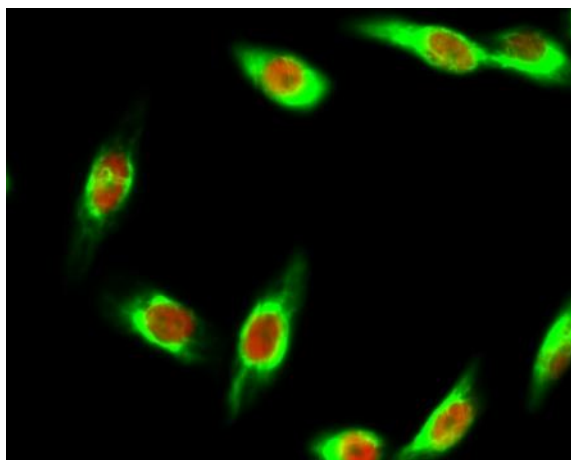
Source :	Polyclonal, Rabbit,IgG
Dilution :	WB 1:500 - 1:2000. IHC: 1:100-300 ELISA: 1:20000. IF 1:100-300 Not yet tested in other applications.
Purification :	The antibody was affinity-purified from rabbit antiserum by affinity-chromatography using epitope-specific immunogen.
Concentration :	1 mg/ml
Storage Stability :	-15°C to -25°C/1 year(Do not lower than -25°C)
Observed Band :	25kD
Background :	<p>The protein encoded by this gene belongs to the BCL2 protein family. BCL2 family members form oligomers or heterodimers and act as anti- or pro-apoptotic regulators that are involved in a wide variety of cellular activities. This protein localizes to mitochondria, and functions to induce apoptosis. It interacts with and accelerates the opening of the mitochondrial voltage-dependent anion channel, which leads to a loss in membrane potential and the release of cytochrome c. This protein also interacts with the tumor suppressor P53 after exposure to cell stress. [provided by RefSeq, Jul 2008],</p>
Function :	<p>caution:Could be the product of a pseudogene.,domain:Intact BH3 domain is required by BIK, BID, BAK, BAD and BAX for their pro-apoptotic activity and for their interaction with anti-apoptotic members of the Bcl-2 family. Apoptotic members of the Bcl-2 family.,domain:Intact BH3 motif is required by BIK, BID, BAK, BAD and BAX for their pro-apoptotic activity and for their interaction with anti-apoptotic members of the Bcl-2 family.,function:In the presence of an appropriate stimulus, accelerates programmed cell death by binding to, and antagonizing the a repressor Bcl-2 or its adenovirus homolog E1B 19k protein.,function:In the presence of an appropriate stimulus, accelerates programmed cell death by binding to, and antagonizing the a. repressor BCL2 or its adenovirus homolog E1B 19k protein. Low micromolar levels of zinc ions inhibit the promotion of apoptosis.,similarity:Belongs to the B</p>
Subcellular Location :	Mitochondrion outer membrane ; Single-pass membrane protein .
Expression :	Expressed in a wide variety of tissues, with highest levels in the heart and skeletal muscle.
Tag :	orthogonal
Sort :	1
No3 :	ab32371

No4 :	<u>1</u>
Host :	<u>Rabbit</u>
Modifications :	<u>Unmodified</u>

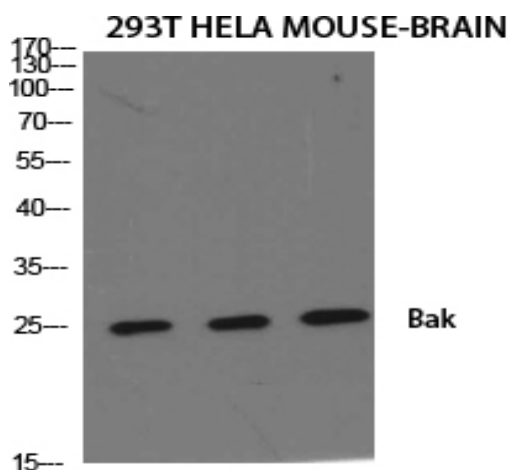
Products Images



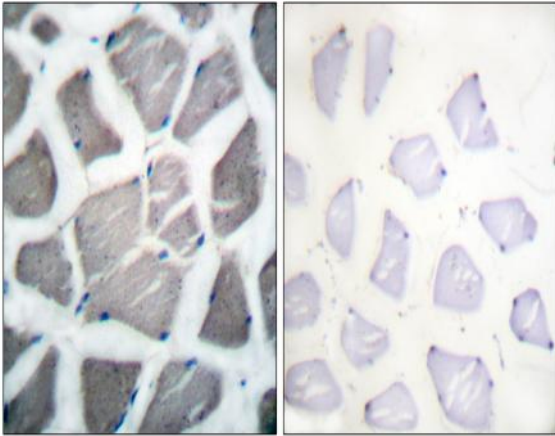
Immunofluorescence analysis of A549. 1,primary Antibody was diluted at 1:200(4°C overnight). 2, Goat Anti Rabbit IgG (H&L) - Alexa Fluor 488 Secondary antibody was diluted at 1:1000(room temperature, 50min).3, Picture B: DAPI(blue) 10min.



Immunofluorescence analysis of HeLa cell. 1,Bak Polyclonal Antibody(green) was diluted at 1:200(4° overnight). (red) was diluted at 1:200(4° overnight). 2, Goat Anti Rabbit Alexa Fluor 488 Catalog:RS3211 was diluted at 1:1000(room temperature, 50min). Goat Anti Mouse Alexa Fluor 594 Catalog:RS3608 was diluted at 1:1000(room temperature, 50min).



Western Blot analysis of various cells using Bak Polyclonal Antibody diluted at 1:500



Immunohistochemistry analysis of paraffin-embedded human skeletal muscle tissue, using Bak Antibody. The picture on the right is blocked with the synthesized peptide.