

## ATPBD3 Polyclonal Antibody

<b>Catalog No :</b>	YT0414
<b>Reactivity :</b>	Human;Rat;Mouse;
<b>Applications :</b>	WB;ELISA
<b>Target :</b>	ATPBD3
<b>Fields :</b>	>>Sulfur relay system
<b>Gene Name :</b>	CTU1
<b>Protein Name :</b>	Cytoplasmic tRNA 2-thiolation protein 1
<b>Human Gene Id :</b>	90353
<b>Human Swiss Prot No :</b>	Q7Z7A3
<b>Mouse Swiss Prot No :</b>	Q99J10
<b>Immunogen :</b>	The antiserum was produced against synthesized peptide derived from human ATPBD3. AA range:291-340
<b>Specificity :</b>	ATPBD3 Polyclonal Antibody detects endogenous levels of ATPBD3 protein.
<b>Formulation :</b>	Liquid in PBS containing 50% glycerol, 0.5% BSA and 0.02% sodium azide.
<b>Source :</b>	Polyclonal, Rabbit,IgG
<b>Dilution :</b>	WB 1:500 - 1:2000. ELISA: 1:20000. Not yet tested in other applications.
<b>Purification :</b>	The antibody was affinity-purified from rabbit antiserum by affinity-chromatography using epitope-specific immunogen.
<b>Concentration :</b>	1 mg/ml
<b>Storage Stability :</b>	-15°C to -25°C/1 year(Do not lower than -25°C)

---

**Observed Band :** 36kD

---

**Background :** function:Plays a central role in 2-thiolation of mcm(5)S(2)U at tRNA wobble positions of tRNA(Lys), tRNA(Glu) and tRNA(Gln). Directly binds tRNAs and probably acts by catalyzing adenylation of tRNAs, an intermediate required for 2-thiolation. It is unclear whether it acts as a sulfurtransferase that transfers sulfur from thiocarboxylated URM1 onto the uridine of tRNAs at wobble position.,pathway:tRNA modification; 5-methoxycarbonylmethyl-2-thiouridine-tRNA biosynthesis.,similarity:Belongs to the ttcA family. CTU1/NCS6/ATPBD3 subfamily.,subunit:Component of a complex at least composed of URM1, CTU2/NCS2 and ATPBD3/NCS6. May form a heterodimer with CTU2/NCS2.,

---

**Function :** function:Plays a central role in 2-thiolation of mcm(5)S(2)U at tRNA wobble positions of tRNA(Lys), tRNA(Glu) and tRNA(Gln). Directly binds tRNAs and probably acts by catalyzing adenylation of tRNAs, an intermediate required for 2-thiolation. It is unclear whether it acts as a sulfurtransferase that transfers sulfur from thiocarboxylated URM1 onto the uridine of tRNAs at wobble position.,pathway:tRNA modification; 5-methoxycarbonylmethyl-2-thiouridine-tRNA biosynthesis.,similarity:Belongs to the ttcA family. CTU1/NCS6/ATPBD3 subfamily.,subunit:Component of a complex at least composed of URM1, CTU2/NCS2 and ATPBD3/NCS6. May form a heterodimer with CTU2/NCS2.,

---

**Subcellular Location :** Cytoplasm.

---

**Expression :** Brain,Epithelium,Teratocarcinoma,

---

**Sort :** 2439

---

**No4 :** 1

---

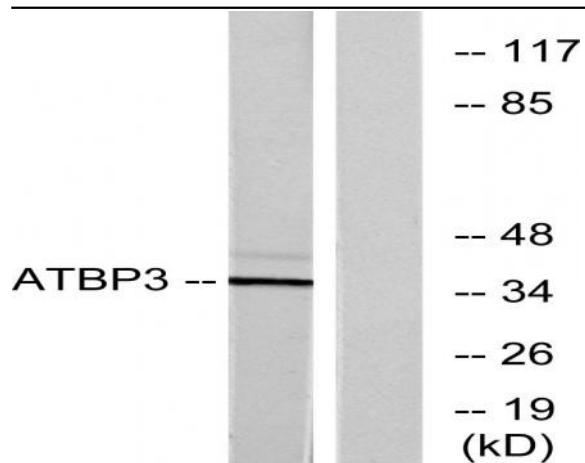
**Host :** Rabbit

---

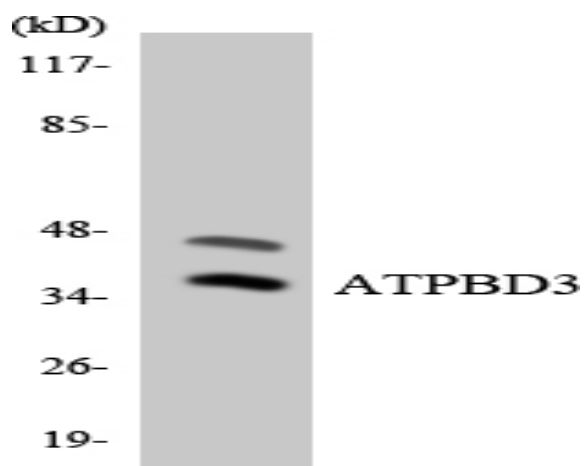
**Modifications :** Unmodified

---

[Products Images](#)



Western blot analysis of lysates from LOVO cells, using ATPBD3 Antibody. The lane on the right is blocked with the synthesized peptide.



Western blot analysis of the lysates from 293 cells using ATPBD3 antibody.