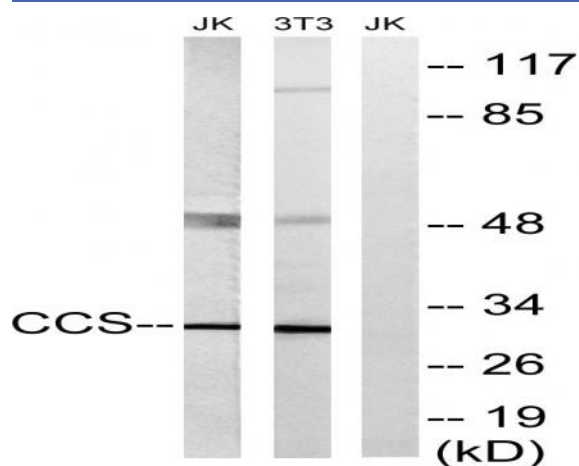


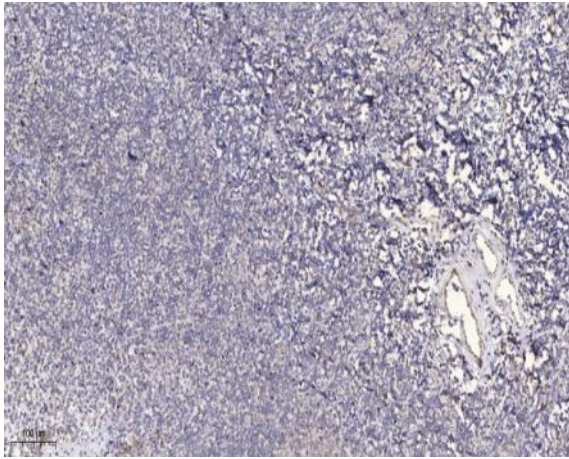
CCS Polyclonal Antibody

Catalog No :	YT0715
Reactivity :	Human;Rat;Mouse;
Applications :	WB;IHC;IF;ELISA
Target :	CCS
Fields :	>>Amyotrophic lateral sclerosis;>>Pathways of neurodegeneration - multiple diseases
Gene Name :	CCS
Protein Name :	Copper chaperone for superoxide dismutase
Human Gene Id :	9973
Human Swiss Prot No :	O14618
Mouse Swiss Prot No :	Q9WU84
Immunogen :	The antiserum was produced against synthesized peptide derived from human CCS. AA range:225-274
Specificity :	CCS Polyclonal Antibody detects endogenous levels of CCS protein.
Formulation :	Liquid in PBS containing 50% glycerol, 0.5% BSA and 0.02% sodium azide.
Source :	Polyclonal, Rabbit,IgG
Dilution :	WB 1:500 - 1:2000. IHC 1:100 - 1:300. ELISA: 1:10000.. IF 1:50-200
Purification :	The antibody was affinity-purified from rabbit antiserum by affinity-chromatography using epitope-specific immunogen.
Concentration :	1 mg/ml
Storage Stability :	-15°C to -25°C/1 year(Do not lower than -25°C)

Observed Band :	32kD
Cell Pathway :	Amyotrophic lateral sclerosis (ALS);
Background :	Copper chaperone for superoxide dismutase specifically delivers Cu to copper/zinc superoxide dismutase and may activate copper/zinc superoxide dismutase through direct insertion of the Cu cofactor. [provided by RefSeq, Jul 2008],
Function :	cofactor: Binds 1 zinc ion per subunit., cofactor: Binds 2 copper ions per subunit., function: Delivers copper to copper zinc superoxide dismutase (SOD1)., similarity: Contains 1 HMA domain., similarity: In the C-terminal section; belongs to the Cu-Zn superoxide dismutase family., subunit: Homodimer, and heterodimer with SOD1., tissue specificity: Ubiquitous.,
Subcellular Location :	Cytoplasm .
Expression :	Ubiquitous.
Sort :	3340
No4 :	1
Host :	Rabbit
Modifications :	Unmodified

Products Images





Immunohistochemical analysis of paraffin-embedded human tonsil. 1, Antibody was diluted at 1:200(4° overnight). 2, Tris-EDTA,pH9.0 was used for antigen retrieval. 3,Secondary antibody was diluted at 1:200(room temperature, 30min).