

CCP3 Polyclonal Antibody

Catalog No :	YT0710
Reactivity :	Human;Rat;Mouse;
Applications :	IHC;IF;ELISA
Target :	CCP3
Gene Name :	AGBL3
Protein Name :	Cytosolic carboxypeptidase 3
Human Gene Id :	340351
Human Swiss Prot No :	Q8NEM8
Mouse Swiss Prot No :	Q8CDP0
Immunogen :	The antiserum was produced against synthesized peptide derived from human AGBL3. AA range:611-660
Specificity :	CCP3 Polyclonal Antibody detects endogenous levels of CCP3 protein.
Formulation :	Liquid in PBS containing 50% glycerol, 0.5% BSA and 0.02% sodium azide.
Source :	Polyclonal, Rabbit,IgG
Dilution :	IHC 1:100 - 1:300. ELISA: 1:20000.. IF 1:50-200
Purification :	The antibody was affinity-purified from rabbit antiserum by affinity-chromatography using epitope-specific immunogen.
Concentration :	1 mg/ml
Storage Stability :	-15°C to -25°C/1 year(Do not lower than -25°C)
Molecularweight :	116kD

Background : cofactor: Binds 1 zinc ion per subunit., function: May play a role in the processing of tubulin., similarity: Belongs to the peptidase M14 family.,

Function : cofactor: Binds 1 zinc ion per subunit., function: May play a role in the processing of tubulin., similarity: Belongs to the peptidase M14 family.,

Subcellular Location : Cytoplasm, cytosol .

Expression : Testis,

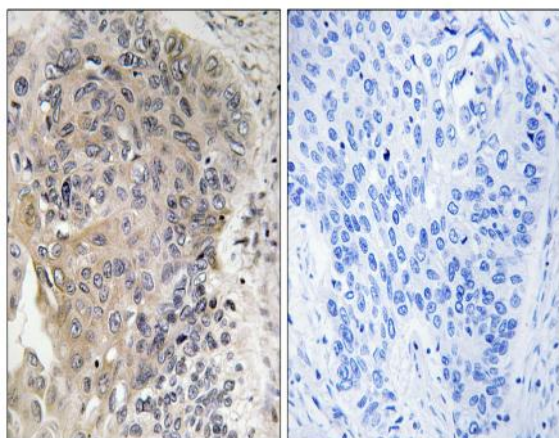
Sort : 3334

No4 : 1

Host : Rabbit

Modifications : Unmodified

Products Images



Immunohistochemistry analysis of paraffin-embedded human lung carcinoma, using CBCP3 Antibody. The picture on the right is blocked with the synthesized peptide.