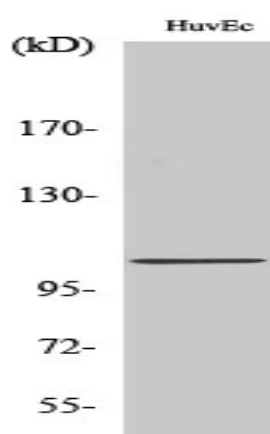


CCP2 Polyclonal Antibody

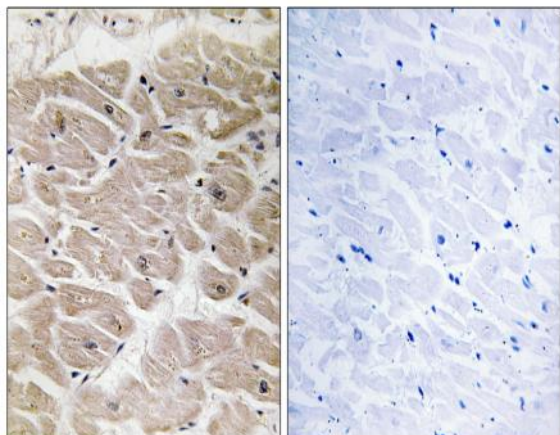
Catalog No :	YT0709
Reactivity :	Human;Mouse
Applications :	WB;IHC;IF;ELISA
Target :	CCP2
Gene Name :	AGBL2
Protein Name :	Cytosolic carboxypeptidase 2
Human Gene Id :	79841
Human Swiss Prot No :	Q5U5Z8
Mouse Gene Id :	271813
Mouse Swiss Prot No :	Q8CDK2
Immunogen :	The antiserum was produced against synthesized peptide derived from human CBCP2. AA range:731-780
Specificity :	CCP2 Polyclonal Antibody detects endogenous levels of CCP2 protein.
Formulation :	Liquid in PBS containing 50% glycerol, 0.5% BSA and 0.02% sodium azide.
Source :	Polyclonal, Rabbit,IgG
Dilution :	WB 1:500 - 1:2000. IHC 1:100 - 1:300. ELISA: 1:40000.. IF 1:50-200
Purification :	The antibody was affinity-purified from rabbit antiserum by affinity-chromatography using epitope-specific immunogen.
Concentration :	1 mg/ml
Storage Stability :	-15°C to -25°C/1 year(Do not lower than -25°C)

Observed Band :	104kD
Background :	cofactor: Binds 1 zinc ion per subunit., function: May play a role in the processing of tubulin., sequence caution: Translated as Lys., similarity: Belongs to the peptidase M14 family.,
Function :	cofactor: Binds 1 zinc ion per subunit., function: May play a role in the processing of tubulin., sequence caution: Translated as Lys., similarity: Belongs to the peptidase M14 family.,
Subcellular Location :	Cytoplasm, cytosol . Cytoplasm, cytoskeleton, microtubule organizing center, centrosome, centriole . Cytoplasm, cytoskeleton, cilium basal body . Colocalizes with gamma-tubulin in the centrioles and with glutamylated tubulin in the basal bodies of ciliated cells. .
Expression :	Lung, Testis,
Sort :	3333
No4 :	1
Host :	Rabbit
Modifications :	Unmodified

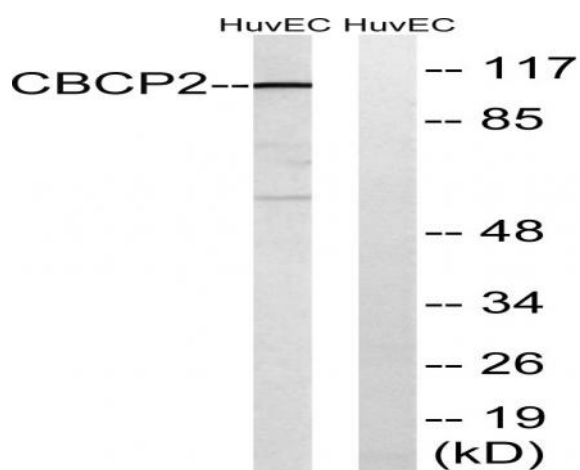
Products Images



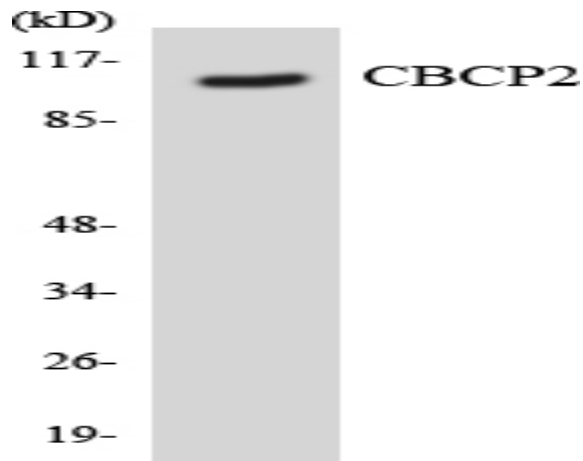
Western Blot analysis of various cells using CCP2 Polyclonal Antibody diluted at 1:2000



Immunohistochemistry analysis of paraffin-embedded human heart tissue, using CBCP2 Antibody. The picture on the right is blocked with the synthesized peptide.



Western blot analysis of lysates from HUVEC cells, using CBCP2 Antibody. The lane on the right is blocked with the synthesized peptide.



Western blot analysis of the lysates from Jurkat cells using CBCP2 antibody.