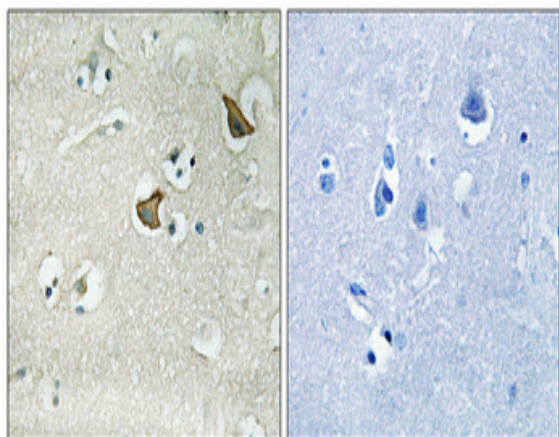


CCK-AR Polyclonal Antibody

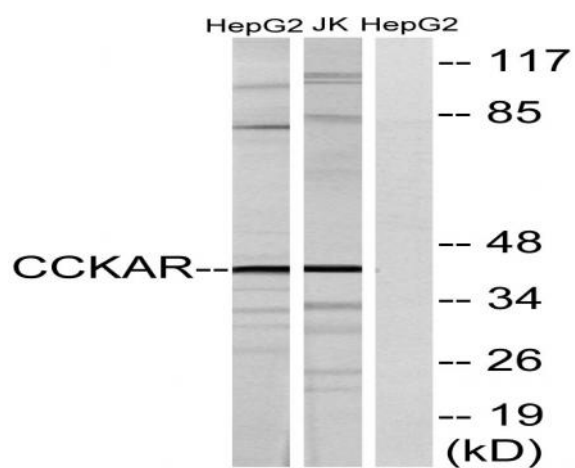
Catalog No :	YT0707
Reactivity :	Human;Mouse;Rat
Applications :	WB;IHC;IF;ELISA
Target :	CCK-AR
Fields :	>>Calcium signaling pathway;>>Neuroactive ligand-receptor interaction;>>Insulin secretion;>>Pancreatic secretion
Gene Name :	CCKAR
Protein Name :	Cholecystokinin receptor type A
Human Gene Id :	886
Human Swiss Prot No :	P32238
Mouse Gene Id :	12425
Mouse Swiss Prot No :	O08786
Rat Gene Id :	24889
Rat Swiss Prot No :	P30551
Immunogen :	The antiserum was produced against synthesized peptide derived from human CCKAR. AA range:215-264
Specificity :	CCK-AR Polyclonal Antibody detects endogenous levels of CCK-AR protein.
Formulation :	Liquid in PBS containing 50% glycerol, 0.5% BSA and 0.02% sodium azide.
Source :	Polyclonal, Rabbit,IgG
Dilution :	WB 1:500 - 1:2000. IHC 1:100 - 1:300. IF 1:200 - 1:1000. ELISA: 1:10000. Not yet tested in other applications.

Purification :	The antibody was affinity-purified from rabbit antiserum by affinity-chromatography using epitope-specific immunogen.
Concentration :	1 mg/ml
Storage Stability :	-15°C to -25°C/1 year(Do not lower than -25°C)
Observed Band :	44kD
Cell Pathway :	Calcium;Neuroactive ligand-receptor interaction;
Background :	This gene encodes a G-protein coupled receptor that binds non-sulfated members of the cholecystinin (CCK) family of peptide hormones. This receptor is a major physiologic mediator of pancreatic enzyme secretion and smooth muscle contraction of the gallbladder and stomach. In the central and peripheral nervous system this receptor regulates satiety and the release of beta-endorphin and dopamine. [provided by RefSeq, Jul 2008],
Function :	function:Receptor for cholecystinin. Mediates pancreatic growth and enzyme secretion, smooth muscle contraction of the gall bladder and stomach. Has a 1000-fold higher affinity for CCK rather than for gastrin. It modulates feeding and dopamine-induced behavior in the central and peripheral nervous system. This receptor mediates its action by association with G proteins that activate a phosphatidylinositol-calcium second messenger system.,online information:Cholecystinin receptor entry,similarity:Belongs to the G-protein coupled receptor 1 family.,
Subcellular Location :	Cell membrane; Multi-pass membrane protein.
Expression :	Gall bladder,Peripheral blood leukocyte,Stomach,
Sort :	3324
No4 :	1
Host :	Rabbit
Modifications :	Unmodified

Products Images



Immunohistochemical analysis of paraffin-embedded Human brain. Antibody was diluted at 1:100(4° overnight). High-pressure and temperature Tris-EDTA,pH8.0 was used for antigen retrieval. Negative control (right) obtained from antibody was pre-absorbed by immunogen peptide.



Western blot analysis of lysates from HepG2 and Jurkat cells, using CCKAR Antibody. The lane on the right is blocked with the synthesized peptide.